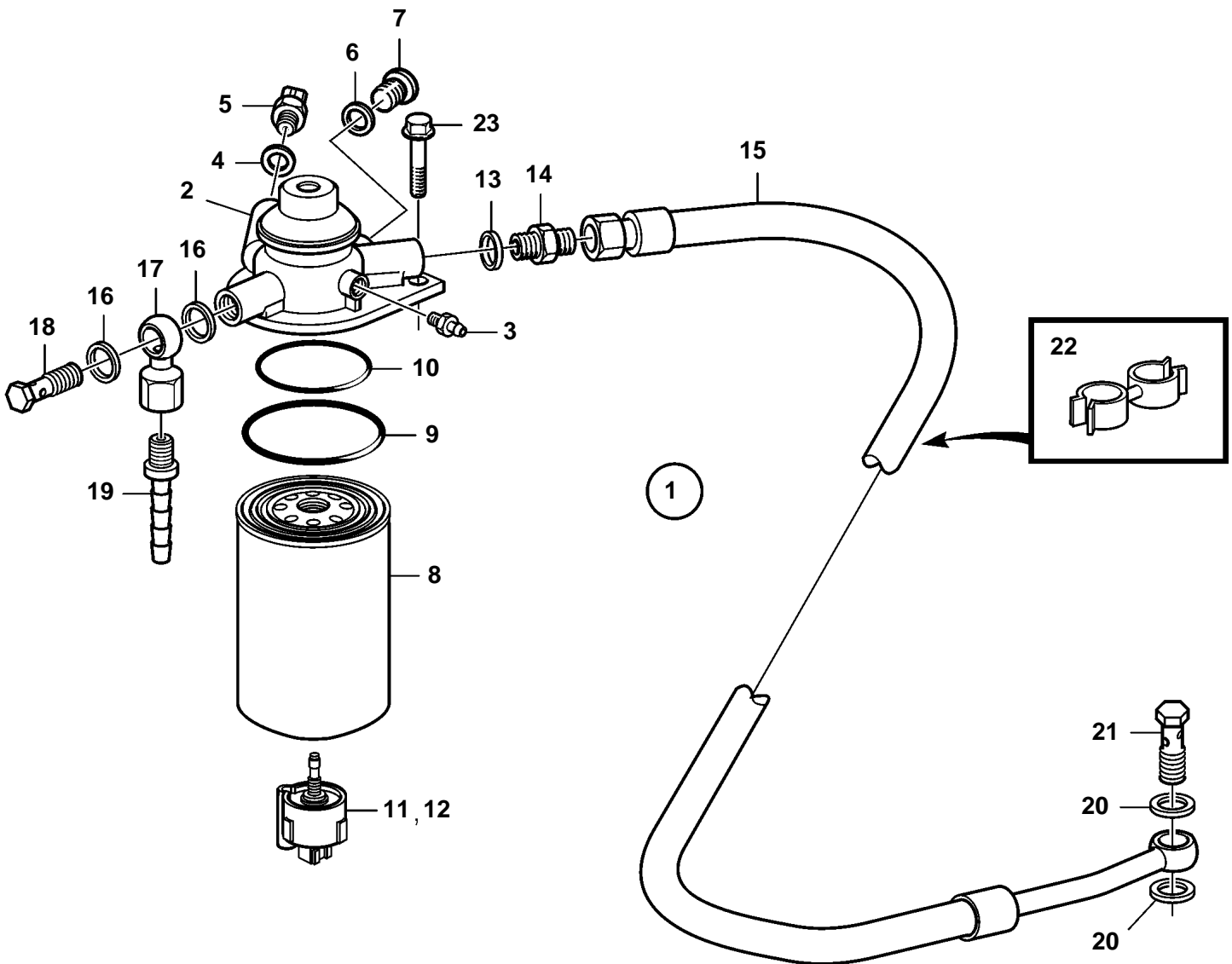


D4-180I-B, D4-180I-C, D4-180I-D, D4-210A-A, D4-210A-B, D4-210I-A, D4-210I-B, D4-225A-B, D4-225A-C, D4-225A-D, D4-225I-B, D4-225I-C, D4-225I-D, D4-260A-A, D4-260A-B, D4-260A-C, D4-260A-D, D4-260D-B, D4-260D-C, D4-260D-D, D4-260I-A, D4-260I-B, D4-260I-C, D4-260I-D, D4-300A-A, D4-300A-C, D4-300A-D, D4-300D-A, D4-300D-C, D4-300D-D, D4-300I-A, D4-300I-C, D4-300I-D



23149

D4-180I-B, D4-180I-C, D4-180I-D, D4-210A-A, D4-210A-B, D4-210I-A, D4-210I-B, D4-225A-B, D4-225A-C, D4-225A-D, D4-225I-B, D4-225I-C, D4-225I-D, D4-260A-A, D4-260A-B, D4-260A-C, D4-260A-D, D4-260D-B, D4-260D-C, D4-260D-D, D4-260I-A, D4-260I-B, D4-260I-C, D4-260I-D, D4-300A-A, D4-300A-C, D4-300A-D, D4-300D-A, D4-300D-C, D4-300D-D, D4-300I-A, D4-300I-C, D4-300I-D

REF	PART NO.	QTY	DESCRIPTION	NOTES
1	3588199	1	Fuel filter	
2		1	· Fuel filter housing	
3	20548012	1	· Faucet	
4	969011	1	· Gasket	
5	1624368	1	· Sensor	
6	969011	1	· Gasket	
7	945065	1	· Plug	M14x1.5
8	3583443	1	· Filter	
9		1	· · O-ring	Included in 3583443
10		1	· · O-ring	Included in 3583443
11		1	· Sensor	
12	3808616	1	Sensor	Installation instruction included.
13	969011	1	Gasket	
14	941754	1	Nipple	
15	3582998	1	Fuel hose	
16	969011	2	Gasket	
17	861101	1	Banjo nipple	
18	25167	1	Hollow screw	
19	3825000	1	Hose nipple	
20	969011	2	Gasket	
21	25167	1	Hollow screw	
22	9205207	1	Retainer	
23	946671	2	Flange screw	