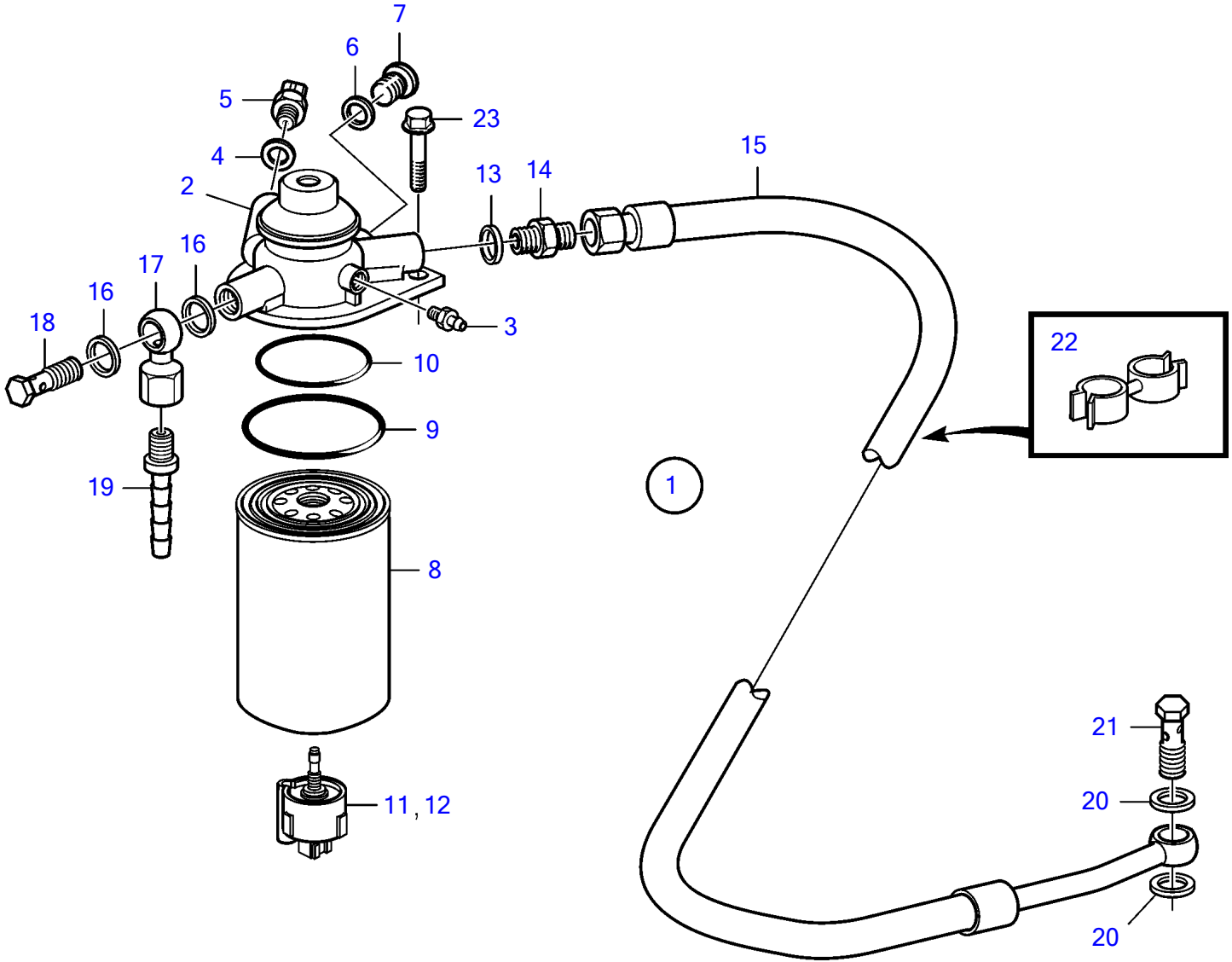


D4-180I-B, D4-180I-C, D4-180I-D, D4-180I-E, D4-210A-A, D4-210A-B, D4-210I-A, D4-210I-B, D4-225A-B, D4-225A-C, D4-225A-D, D4-225I-B, D4-225I-C, D4-225I-D, D4-260A-A, D4-260A-B, D4-260A-C, D4-260A-D, D4-260D-B, D4-260D-C, D4-260D-D, D4-260I-A, D4-260I-B, D4-260I-C, D4-260I-D, D4-300A-A, D4-300A-C, D4-300A-D, D4-300D-A, D4-300D-C, D4-300I-A, D4-300I-C, D4-300I-D, D4-225A-E, D4-225I-E, D4-260A-E, D4-260D-E, D4-260I-E, D4-300A-E, D4-300D-E, D4-300D-D, D4-300I-E



23149

D4-180I-B, D4-180I-C, D4-180I-D, D4-180I-E, D4-210A-A, D4-210A-B, D4-210I-A, D4-210I-B, D4-225A-B, D4-225A-C, D4-225A-D, D4-225I-B, D4-225I-C, D4-225I-D, D4-260A-A, D4-260A-B, D4-260A-C, D4-260A-D, D4-260D-B, D4-260D-C, D4-260D-D, D4-260I-A, D4-260I-B, D4-260I-C, D4-260I-D, D4-300A-A, D4-300A-C, D4-300A-D, D4-300D-A, D4-300D-C, D4-300I-A, D4-300I-C, D4-300I-D, D4-225A-E, D4-225I-E, D4-260A-E, D4-260D-E, D4-260I-E, D4-300A-E, D4-300D-E, D4-300D-D, D4-300I-E

REF	PART NO.	QTY	DESCRIPTION	SEE SEC.	NOTES
1	3588199	1	Fuel filter		
2		1	• Fuel filter housing		
3	20548012	1	• Faucet		
4	11996	1	• Gasket		
5	1624368	1	• Sensor		
6	969011	1	• Gasket		
7	945065	1	• Plug		M14x1.5
8	3583443	1	• Filter		
			• Bulletin P-23-3-5	P-23-3-5-EN	Fuel Filter Missing Inner Gasket
9		1	• • O-ring		Included in 3583443
10		1	• • O-ring		Included in 3583443
11		1	• Sensor		
12	3808616	1	Sensor		Installation instruction included.
13	969011	1	Gasket		
14	941754	1	Nipple		
15	3582998	1	Fuel hose		
16	969011	2	Gasket		
17	861101	1	Banjo nipple		
18	25167	1	Hollow screw		
19	3825000	1	Hose nipple		
20	969011	2	Gasket		
21	25167	1	Hollow screw		
22	9205207	1	Retainer		
23	946671	2	Flange screw		