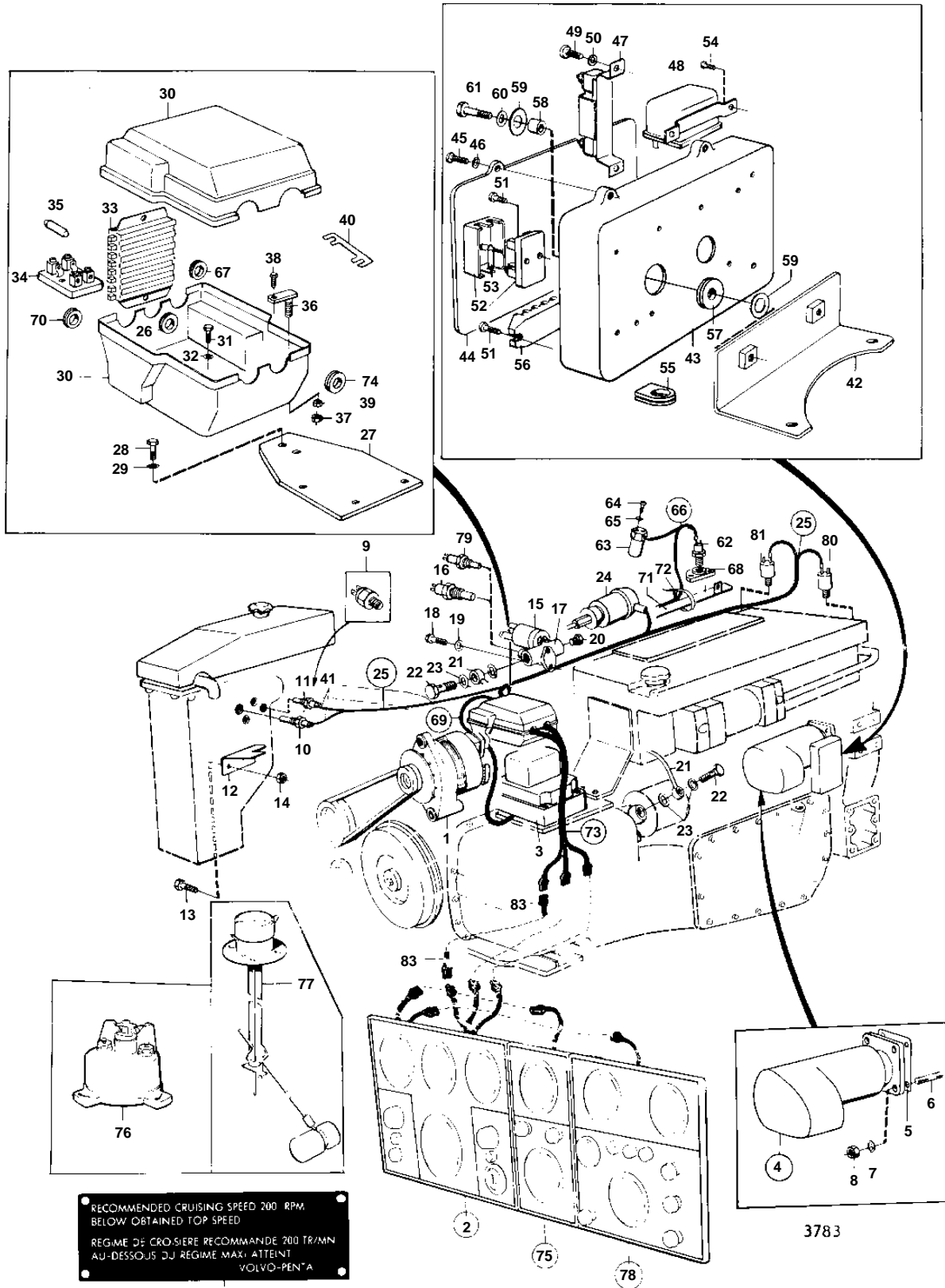


THAMD70C,AQD70CL



THAMD70C,AQD70CL

REF	PART NO.	QTY	DESCRIPTION	SEE SEC.	NOTES
1		1	ALTERNATOR AND INSTALLATION COMPONENTS		12V38A,24V25A
				030-0850	
		1	ALTERNATOR AND INSTALLATION COMPONENTS		24V60A
				030-1100	
2	837820	1	Instrument panel		12V
				030-1600	
	837819	1	Instrument panel		24V
				030-1600	
3		1	CHARGING RELAY AND INSTALLATION COMPONENTS		12V38A,24V25A
				030-0850	
	823766	1	Charge regulator		24V60A
				030-1350	
4	842775	1			12V MO-403/XXXX
				030-1400	
	842774	1	Starter motor		24V MO-403/XXXX
				030-1400	
	843511	1	Starter motor		12V MO404/XXXX-
				030-1450	
	843510	1	Starter motor		24V MO404/XXXX-
				030-1450	
	847306	1	Starter motor		12V LATER PROD
				030-1515	
	847307	1	Starter motor		24V LATER PROD
				030-1525	
5		1	PLATE		EARLY TYPE
6	953486	3	Stud		
7	942336	3	Spring washer		
8	955827	3	Nut		
9	354671	1	Tachometer sensor		
10	827150	1	Temperature sensor		
11	822858	1	Thermo monitor		
12	837279	1	Protecting plate		
13	955523	2	Screw		
14	955826	2	Nut		
15	843231	1	Oil pressure sensor		
16	881348	1	Pressure switch		STOP
17	836927	1	Pipe connection		
18	955525	2	Screw		
19	941907	2	Spring washer		
20	191026	X	Plug		
21	836860	1	Pressure oil line		SEE GROUP 2A
22	48634	2	Hollow screw		SEE GROUP 2A
23	907132	4	Gasket		SEE GROUP 2A
24		1	STOP SOLENOID AND INSTALLATION COMPONENTS		SEE GROUP 2D
25	837925	1	Cable trunk		
26	941265	1	· Cable grommet		
27	837845	1	Bracket		12V38A,24V25A
28	955523	2	Screw		12V38A,24V25A
29	941907	2	Spring washer		12V38A,24V25A
30	837791	2	Clutch housing		MO 12338/XXXX-
31	955524	3	Screw		L = 19 MM
	955525	3	Screw		L = 25 MM 24V60A
32	941907	3	Spring washer		
	820506	3	Spacer sleeve		24V60A
33	837829	1	Terminal block		
34	88578	1	Fuse box		
35	943905	1	Fuse		25A
36	837796	4	Screw		

7743250 - 030 - 030-0650

3783

Upd: 22 NOV 2005

MD70C, TMD70C, TAMD70C, THAMD70C, AQD70C

**VOLVO**  
**PENTA**

THAMD70C,AQD70CL

REF	PART NO.	QTY	DESCRIPTION	SEE SEC.	NOTES
37	17602	4	Nut		
38	941616	4	Screw		
39	17602	4	Nut		
40	77796	2	Fuse		50A
	239148	2	Fuse		80A
41		X	CABLES AND TERMINALS BRACKET	030-1950	
42	842226	1	Bracket		
43	837335	1	Clutch housing		
44	823617	1	Cover		
45	950047	4	Screw		
46	941906	4	Spring washer		
47	844486	1	Timer relay		12V
	837344	1	Resistor		
48	870670	3	Relay		12V
	870451	3	Relay		24V
49	950044	2	Screw		
50	941906	2	Spring washer		
51	950011	4	Screw		
52	88578	1	Fuse box		
53	943905	2	Fuse		25A
54	950009	4	Screw		
55	823759	2	Cable grommet		
56	942558	1	Terminal block		
57	837369	2	Bushing		
58	837372	2	Spacer sleeve		
59	960141	4	Washer		
60	941907	2	Spring washer		
61	956571	2	Screw		
62	842076	1	Glow plug		12V SEE GROUP 2C
	842077	1	Glow plug		24V SEE GROUP 2C
63	837327	1	Solenoid valve		12V SEE GROUP 2C
	837328	1	Solenoid valve		24V SEE GROUP 2C
64	955270	2	Screw		
65	941906	2	Spring washer		
66	842229	1	Cable trunk		
67	941265	1	· Cable grommet		
68	837862	1	Flange		SEE GROUP 2B
69	837908	1	Cable trunk		12V38A,24V25A
	837909	1	Cable trunk		24V60A
70	941265	1	· Cable grommet		
71		1	CABLE HOLDERS		
72	948210	X	Strip clamp		
73	837836	1	Cable trunk		
74	941265	1	· Cable grommet		
75	837995	1	Instrument panel		
				030-1700	
	837996	1	Instrument panel		12V. INSTRUMENT PANEL FOR TANK GAUGE AND RUDDER ANGEL INDICATOR
				030-1700	
76	837772	1	Rudder position sens		
77	837999	1	Tank sensor		
78	837993	1	Instrument panel		12V. -INSTRUMENT PANEL FOR HOUR INDICATOR AND EXTRA ALARM DEVICE.
				030-1650	
	837994	1	Instrument panel		12V. -INSTRUMENT PANEL FOR HOUR INDICATOR AND EXTRA ALARM DEVICE.
				030-1650	
79	880281	1	Pressure monitor		
80	837781	1	Pressure sensor		SEE GROUP 4A
81	837782	1	Pressure sensor		SEE GROUP 2B
82	837374	1	Sign		
83	825738	X	Cable trunk		L = 2500 MM
	820419	X	Cable		L = 7000 MM

7743250 - 030 - 030-0650

3783

Upd: 22 NOV 2005

MD70C, TMD70C, TAMD70C, THAMD70C, AQD70C

