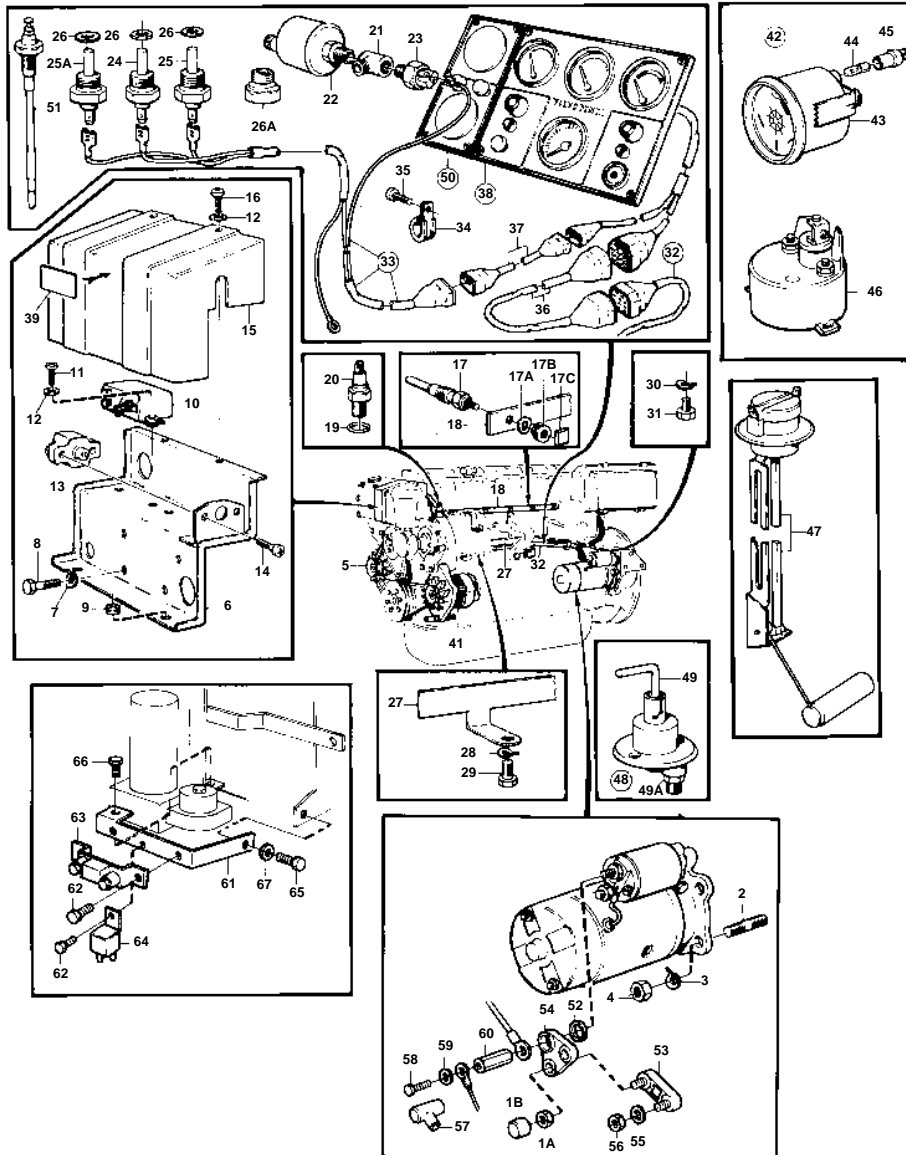


MD40A,AQD40A,AQAD40A,AQAD40B,TAMD40A,TAMD40B



7595

MD40A,AQD40A,AQAD40A,AQAD40B,TAMD40A,TAMD40B

REF	PART NO.	QTY	DESCRIPTION	SEE SEC.	NOTES
1	829527	1	Starter motor		
				030-1700	
	838987		Starter motor		24V
				030-1800	
1A	853573	1	Nut		
1B	853572	1	Protective cap		
2	953067	3	Stud		
3	941908	3	Spring washer		
4	955783	3	Nut		
5	834625		Alternator, ALTERNATOR AND INSTALLATION COMPONENTS		MO-1900 REPL BY 834964
				030-1050	
	834964	1	, ALTERNATOR AND INSTALLATION COMPONENTS		MO-12769 REPL BY 841378
				030-1050	
	841378	1	Alternator, ALTERNATOR AND INSTALLATION COMPONENTS		MO12770-21869. REPLACED BY 841768.
				030-1050	
	841768	1	Alternator, ALTERNATOR AND INSTALLATION COMPONENTS		MO21870-25724. REPLACED BY ALTERNATOR 841765 +PULLEY 841812 + TENSION IRON 845021.
				030-1050	
	841765	1	Alternator, ALTERNATOR AND INSTALLATION COMPONENTS		REPL BY 858838
					MO25725-
				030-1050	
	858838	1	Alternator, ALTERNATOR AND INSTALLATION COMPONENTS		
				030-1050	
	845940	1	Alternator, ALTERNATOR INSTALLATION COMPONENTS		24V REPL BY 849563. SPEC 867948.
				030-1050	
	849563	1	Alternator INSTALLATION COMPONENTS		
				030-1050	
6	843140	1	Electrical distribut		
	846791	1	Box		
				030-0625	
7	941907	4	Spring washer		SEE GROUP 2B
8	955305	4	Screw		SEE GROUP 2B
9	94026	2	Rubber bushing		
10	843145	2	Relay		REPLACED BY 1EA RELAY-838510,2EA CABLE TERMINAL-881485 AND 1EA INSULATOR-958210.
	838518	2	Relay		
11	955140	4	Screw		
12	940090	6	Washer		
13	841178	1	Fuse		(835596)
14	950013	2	Screw		
15	842915	1	Cover		
16	955138	2	Screw		
17	1542411	6	Glow plug		(1542319)
	838954	6	Glow plug		SPEC 867948.
17A	941905	6	Spring washer		
17B	955780	6	Nut		
17C	1542408	6	Protecting casing		
18	1542296	1	Rail		
19	925059	1	O-ring	IK	
20	1502028	1	Tachometer sensor		(829571)
21	942490	1	T-nipple		
22	843231	1	Oil pressure sensor		
	834920	1	Oil pressure sensor		FOR TMD40A SPEC 867478, AQD40A SPEC 867479.
23	881348	1	Pressure switch		
24	827151	1	Temperature sensor		

7744060 - 030 - 030-0600

7595

Upd: 19 JUN 2006

MD40, TMD40, AQD40, TAMD40, AQAD40



## MD40A,AQD40A,AQAD40A,AQAD40B,TAMD40A,TAMD40B

REF	PART NO.	QTY	DESCRIPTION	SEE SEC.	NOTES
24	834629	1	Temperature sensor		FOR TMD40A SPEC 867478, AQD40A SPEC 867479.
	858596	1	Temperature sensor		FOR DUAL STATION.. COMBINED TEMPERATURE SENSOR AND GUARD. MO38777-
25	833927	1	Thermo monitor		
	822858	1	Thermo monitor		SPEC 867948.
25A	840345	1	Temperature sensor		ALTERNATIVE FOR TEMP.SENDER 827151 AND THERMOSWITCH CONTROL 833927. SPEC 867948.
	843325	1	Temperature sensor		
26	957181	3	Gasket	IK	
26A	844828	1	Nipple		FOR TMD40A SPEC 867478, AQD40A SPEC 867479.
27		X	CABLE HOLDER		
28	941908	1	Spring washer		MO-26461
29	955314	1	Screw		MO-26461
30	941907	1	Spring washer		MO-26461
31	955293	1	Screw		MO-26461
	940199	1	Screw		AQAD40A SPEC 867560, -561, -562. TAMD40A SPEC 867563, -564, -565.
32	843450	1	Cable trunk		ENGINE L = 7000 MM
	844869	1	Cable trunk, CABLE UNIT		ENGINE. FOR TMD40A SPEC 867478, AQD40A SPEC 867479.
					L = 7000 MM
	845344	1	Cable trunk, CABLE UNIT		ENGINE. AQAD40A SPEC 867560, -561, -562. TAMD40A SPEC 867563, -564, -565.
					L = 7000 MM
	846648	1	Extension cable		CPC, L = 3000 MM
	846649	1	Extension cable		CPC, L = 5000 MM
	846650	1	Extension cable		CPC, L = 7000 MM
33	843501	1	Cable trunk		ALARM
	844892	1	Cable trunk, CABLE UNIT		ALARM. FOR TMD40A SPEC 867478, AQD40A SPEC 867479.
					L = 7000 MM
	845451	1	Cable trunk, CABLE UNIT		ALARM. AQAD40A SPEC 867560, -561, -562. TAMD40A SPEC 867563, -564, -565.
					L = 7000 MM
	858057	1	Cable trunk		SPEC 867948.
34	952628	1	Clamp		MO-26461
35	956094	1	Screw		MO-26461
36	843214	1	Cable trunk		ENGINE. EXCL TMD40A SPEC 867478, AQD40A SPEC 867479.
37	839180	1	Cable, EXTENSION CABLE		ALARM. EXCL TMD40A SPEC 867478, AQD40A SPEC 867479.
					L = 7000 MM
38	843525	1	Instrument panel		EXCL TMD40A SPEC 867478, AQD40A SPEC 867479.
				030-2150	
	838926	1	Instrument panel		
				030-2160	
	858036	1	Instrument panel		24V
				030-2160	
		1	INSTRUMENT PANEL		LATE TYPE, SEE GROUP 9
39	843141	1	Decal		
40	955949	1	Lock washer		
41		X	ALTERNATOR KIT		SEE GROUP 9
42	834401	1	Rudder indicator		
43	834383	1	· Rudder indicator		
44	19923	1	· Bulb		
45	808175	1	· Bulb socket		
46	837772	1	· Rudder position sens		

MD40A,AQD40A,AQAD40A,AQAD40B,TAMD40A,TAMD40B

REF	PART NO.	QTY	DESCRIPTION	SEE SEC.	NOTES
47	834400	1	Tank gauge, TANK GAUGE DRINKING WATER		SEE GROUP 9
	834399	1	Tank gauge, TANK GAUGE FUEL		SEE GROUP 9
48	870980	1	Switch		
49	243700	1	· Handle		
49A	955783	2	· Nut		
50	843604	1	Instrument panel		SEE GROUP 9
		1	INSTRUMENT PANEL		LATE TYPE, SEE GROUP 9
51		X	COOLING WATER LEVEL ALARM		SEE GROUP 9
52	829714	1	Seal		AQAD40B/290,290DP
53	853502	1	Fuse		AQAD40B/290,290DP
54	852986	1	Current bar		AQAD40B/290,290DP
55	941906	2	Spring washer		AQAD40B/290,290DP
56	955781	2	Nut		AQAD40B/290,290DP
57	855798	1	Protecting sleeve		
58	940199	1	Screw		
59	941907	1	Spring washer		
60	855314	1	Nut		
61	858078	1	Bracket		SPEC 867948.
62	955268	3	Screw		SPEC 867948.
63	838980	1	Series resistance		SPEC 867948.
64	838955	1	Relay		SPEC 867948.
65	955318	1	Screw		SEE GROUP 2B. SPEC 867948.
66	955296	1	Screw		SPEC 867948.