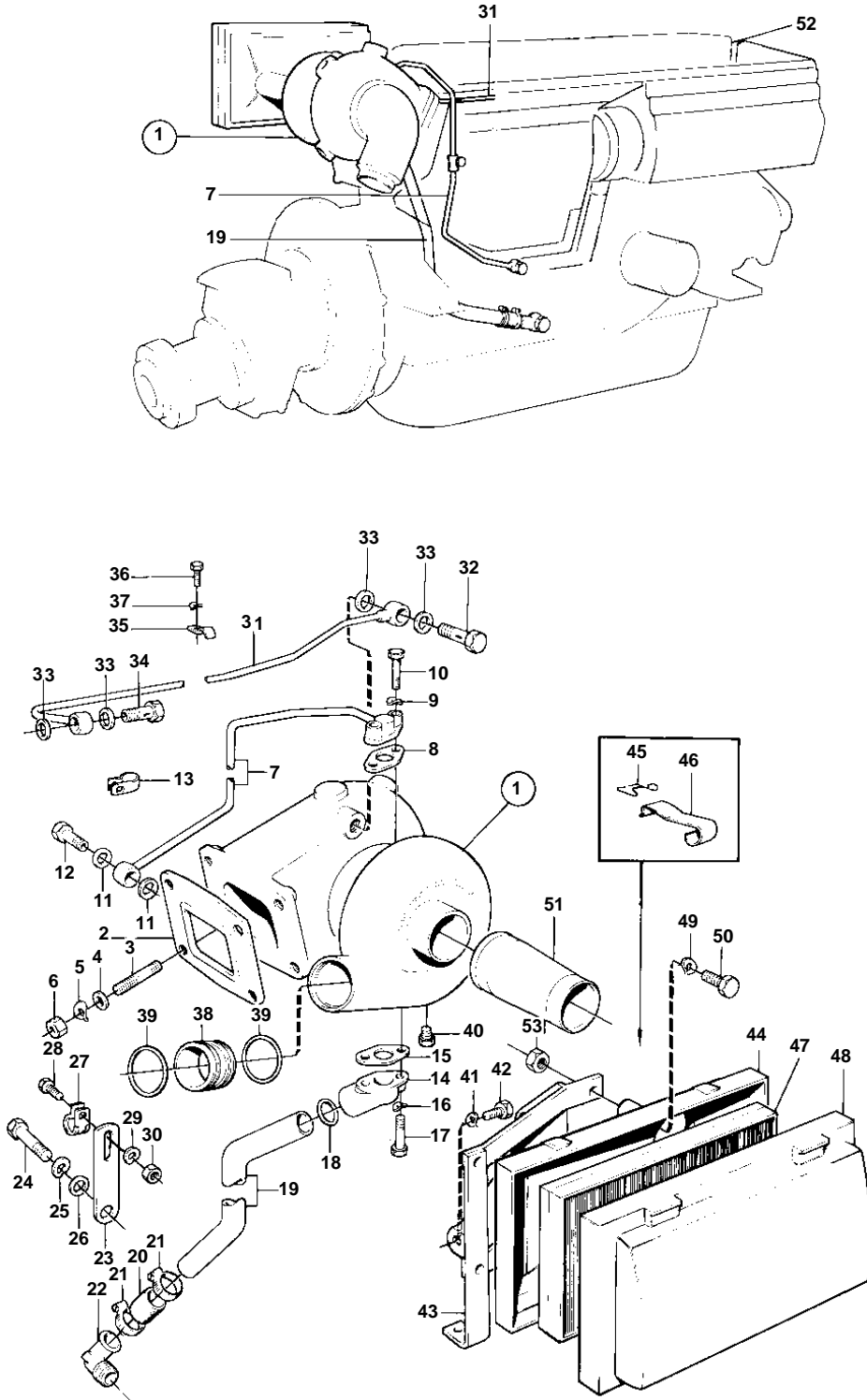


AQAD40A,AQAD40B,TAMD40A,TAMD40B



5923

TURBO COMPRESSOR AND AIR FILTER WITH INSTALLATION COMPONENTS

02B

AQAD40A,AQAD40B,TAMD40A,TAMD40B

| REF | PART NO. | QTY | DESCRIPTION | SEE SEC. | NOTES |
|-----|----------|-----|--------------------|----------|---|
| 1 | 845294 | 1 | Turbo | | |
| | 3802033 | 1 | Turbocharger, exch | | Exchange unit |
| | | | | 02B-2075 | |
| 2 | 843009 | 1 | Gasket | IK | |
| 3 | 953063 | 4 | Stud | | INCLUDED IN TURBO COMPRESSOR. |
| 4 | 955895 | 4 | Washer | | |
| 5 | 941908 | 4 | Spring washer | | |
| 6 | 940183 | 4 | Nut | | |
| 7 | 842938 | 1 | Oil feed pipe | | |
| 8 | 842943 | 1 | Gasket | IK | |
| 9 | 941907 | 2 | Spring washer | | |
| 10 | 940142 | 2 | Screw | | |
| 11 | 18671 | 2 | Gasket | IK | |
| 12 | 25167 | 1 | Hollow screw | | |
| 13 | 191992 | 1 | Clamp | | |
| 14 | 842942 | 1 | Flange | | FOR 844036 |
| 15 | 842986 | 1 | Gasket | IK | |
| 16 | 941907 | 2 | Spring washer | | |
| 17 | 955299 | 2 | Screw | | FOR 844036 |
| | 955297 | 2 | Screw, SCREW | | FOR 838535 290DP |
| 18 | 947061 | 1 | Gasket | IK | FOR 844036 |
| 19 | 844036 | 1 | Oil return pipe | | EXCL AQAD40B/290,290DP TAMD40B MO-42614 |
| | 838535 | 1 | Tube | | AQAD40B/290,290DP TAMD40B MO42615- |
| 20 | 466328 | 1 | Rubber hose | | L = 60 MM |
| 21 | 943474 | 2 | Hose clamp | | |
| 22 | 843879 | 1 | Elbow nipple | | |
| 23 | 843711 | 1 | Bracket | | |
| 24 | 955361 | 1 | Screw | | |
| 25 | 941912 | 1 | Spring washer | | |
| 26 | 955900 | 1 | Washer | | |
| 27 | 952632 | 1 | Clamp | | |
| 28 | 955269 | 1 | Screw | | |
| 29 | 941906 | 1 | Spring washer | | |
| 30 | 946035 | 1 | Lock nut | | |
| 31 | 845413 | 1 | Gasket | | MO-24591. REPLACED BY 1EA 846215 PIPE, 2EA 846216 HOLLOW BOLT, 2EA 957174 PACKING, 2EA 957175 PACKING, 2EA 18344 CLAMP. |
| | 846215 | 1 | Vent pipe | | MO 24592- |
| 32 | 942806 | 1 | Hollow screw | | |
| 33 | 957173 | 4 | Gasket | IK | |
| 34 | 942806 | 1 | Hollow screw | | |
| 35 | 191487 | 2 | Clamp | | |
| 36 | 955269 | 2 | Screw | | |
| 37 | 941906 | 2 | Spring washer | | |
| 38 | 842965 | 1 | Tube | | 02B-2200 |
| 39 | 948610 | 2 | O-ring | IK | 02B-2200 |
| 40 | 192134 | 1 | Plug | | |
| 41 | 941908 | 2 | Spring washer | | |
| 42 | 955317 | 2 | Screw | | L = 25 MM |
| | 955317 | 1 | Screw | | SPEC 867948 |
| | 955318 | 1 | Screw | | SEE GROUP 3. SPEC 867948 |
| 43 | 844593 | 1 | Bracket | | |
| 44 | 842680 | 1 | Housing | | |
| 45 | 673792 | 4 | · Lock | | |
| 46 | 463908 | 4 | · Clamp | | |
| 47 | 463505 | 1 | Insert | | |
| 48 | 842615 | 1 | Cover | | |
| 49 | 941907 | 5 | Spring washer | | |
| 50 | 959224 | 2 | Screw | | L = 45 MM |
| | 959227 | 2 | Screw | | L = 50 MM |

7744060 - 02B - 02B-2025

5923

Upd: 19 JUN 2006

MD40, TMD40, AQD40, TAMD40, AQAD40

VOLVO
PENTA

TURBO COMPRESSOR AND AIR FILTER WITH INSTALLATION COMPONENTS

02B

AQAD40A,AQAD40B,TAMD40A,TAMD40B

| REF | PART NO. | QTY | DESCRIPTION | SEE SEC. | NOTES |
|-----|----------|-----|------------------------------------|----------|-------|
| 51 | 842639 | 1 | Hose | | |
| 52 | | | INDUCTION- AND EXHAUST MANIFOLD | 02B-2200 | |
| 53 | 963106 | 4 | Nut | | |