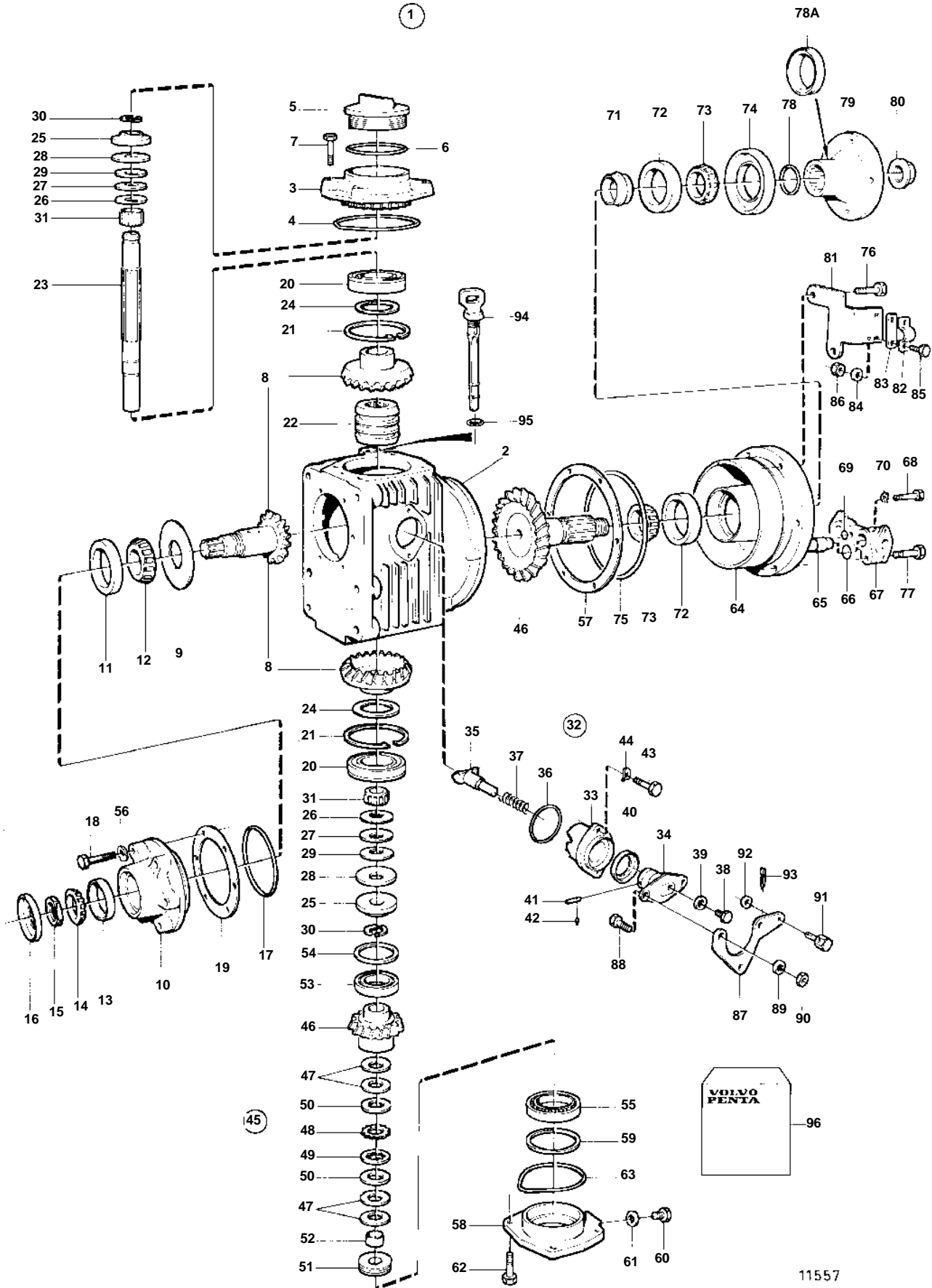


MS2L-E



MS2L-E

| REF | PART NO. | QTY | DESCRIPTION | SEE SEC. | NOTES |
|-----|----------|-----|-----------------------|-------------|-----------------------------------|
| 1 | 873079 | 1 | Reversing gear | SO | RATIO 2.3:1 |
| 2 | 873092 | 1 | · Gear housing | | |
| 3 | 873123 | 1 | · Cover | | |
| 4 | 949962 | 1 | · O-ring | | Included in gasket kit. |
| 5 | 851754 | 1 | · Oil filler cap | | |
| 6 | 1664473 | 1 | · O-ring | | (925254). Included in gasket kit. |
| 7 | 946671 | 4 | · Flange screw | | |
| 8 | 873095 | 1 | · Gear set | | |
| 9 | 851621 | 1 | · Guide disc | | |
| 10 | 872710 | 1 | · Bearing box | | |
| 11 | 181302 | 1 | · Cup | | |
| 12 | 181301 | 1 | · Inner ring | | |
| 13 | 183750 | 1 | · Cup | | |
| 14 | 183752 | 1 | · Inner ring | | |
| 15 | 852485 | 1 | · Lock nut | | |
| 16 | 873094 | 1 | · Sealing ring | | Included in gasket kit. |
| 17 | 925093 | 1 | · O-ring | | Included in gasket kit. |
| 18 | 940101 | 6 | · Screw | | |
| 19 | 851622 | X | · Shim | | TH = 0,10mm |
| | 851623 | X | · Shim | | TH = 0.15mm |
| | 851624 | X | · Shim | | TH=0.35mm |
| 20 | 851756 | 2 | · Bearing | | |
| 21 | 852190 | 2 | · Lock ring | | |
| 22 | 873098 | 1 | · Sliding sleeve | | |
| 23 | 873099 | 1 | · Shaft | | |
| 24 | 941835 | X | · Shim | | TH = 0,05mm, D = 71mm |
| | 852184 | X | · Shim | | TH = 0,05mm, D = 43mm |
| | 84219 | X | · Shim | | TH = 0,10mm |
| | 949776 | X | · Shim | | TH = 0.15mm |
| | 84218 | X | · Spacer | | TH=0.35mm |
| 25 | 852079 | 2 | · Lock washer | | |
| 26 | 852311 | 2 | · Washer | | TH=0,40mm |
| 27 | 852317 | 2 | · Washer | | TH = 0,80mm |
| 28 | 852213 | 2 | · Disc spring | | |
| 29 | 852080 | 6 | · Disc spring | | |
| 30 | 851629 | 4 | · Lock ring half | | |
| 31 | 851757 | 2 | · Needle bearing | | |
| 32 | 851661 | 1 | · Shift mechanism | | |
| 33 | 851662 | 1 | · · Bearing housing | | |
| 34 | 897816 | 1 | · · Eccentric piston | | |
| | | | · · Bulletin P-44-1-7 | P-44-1-7-EN | Shift mechanism, eccentric piston |
| 35 | 851664 | 1 | · · Dog | | |
| 36 | 925065 | 1 | · · O-ring | | Included in gasket kit. |
| 37 | 814184 | 1 | · · Spring | | |
| 38 | 897711 | 1 | · · Screw | | |
| 39 | 897871 | X | · · Shim | | TH=0,20mm |
| 40 | 873291 | 1 | · · Sealing ring | | Included in gasket kit. |
| 41 | 942871 | 1 | · · Pin | | |
| 42 | 951924 | 1 | · · Tensioning din | | |
| 43 | 955296 | 2 | · Screw | | |
| 44 | 941907 | 2 | · Spring washer | | |
| 45 | 854284 | 1 | · Gear set | | |
| 46 | | 2 | · · Gear | | |
| 47 | | 4 | · · Washer | | |
| 48 | | 18 | · · Discouter | | |
| 49 | | 17 | · · Discinner | | |
| 50 | | 2 | · · Thrust washer | | |
| 51 | | 1 | · · Adjuster screw | | |
| 52 | | 1 | · · Bushing | | |
| 53 | 183518 | 1 | · Bearing | | |
| 54 | 851705 | X | · Shim | | TH = 0,10mm |
| | 851706 | X | · Shim | | TH = 0.15mm |
| | 851707 | X | · Shim | | TH=0.35mm |

MS2L-E

| REF | PART NO. | QTY | DESCRIPTION | SEE SEC. | NOTES |
|-----|----------|-----|--------------------|----------|-------------------------|
| 55 | 183842 | 1 | · Roller bearing | | |
| 56 | 941906 | 6 | · Spring washer | | |
| 57 | 851702 | X | · Shim | | TH = 0,10mm |
| | 851703 | X | · Shim | | TH = 0.15mm |
| | 851704 | X | · Shim | | TH=0.35mm |
| 58 | 873129 | 1 | · Bearing cover | | |
| 59 | 87655 | X | · Shim | | TH = 0,10mm |
| | 191840 | X | · Shim | | TH = 0.15mm |
| | 87654 | X | · Spacer | | TH=0.35mm |
| 60 | 960629 | 1 | · Plug | | |
| 61 | 947084 | 1 | · Gasket | | Included in gasket kit. |
| 62 | 946671 | 4 | · Flange screw | | |
| 63 | 925256 | 1 | · O-ring | | Included in gasket kit. |
| 64 | 873130 | 1 | · Bearing housing | | |
| 65 | 853940 | 1 | · Oil cooler | | |
| 66 | 943309 | 2 | · O-ring | | Included in gasket kit. |
| 67 | 873212 | 1 | · Pipe connection | | |
| 68 | 955279 | 1 | · Screw | | L=55mm |
| 69 | 949750 | 1 | · O-ring | | Included in gasket kit. |
| 70 | 941906 | 1 | · Spring washer | | |
| 71 | 851974 | 1 | · Collet | | |
| 72 | 181302 | 2 | · Cup | | |
| 73 | 181301 | 2 | · Inner ring | | |
| 74 | 873100 | 1 | · Sealing ring | | Included in gasket kit. |
| 75 | 925256 | 1 | · O-ring | | Included in gasket kit. |
| 76 | 946470 | 2 | · Flange screw | | L=35mm |
| | 947760 | 2 | · Flange screw | | L=40mm |
| 77 | 965180 | 2 | · Flange screw | | L=60mm |
| 78 | 925062 | 1 | · O-ring | | Included in gasket kit. |
| 78A | 944138 | 1 | · Sealing ring | | Included in gasket kit. |
| 79 | 852076 | 1 | · Companion flange | | |
| 80 | 947855 | 1 | · Lock nut | | |
| 81 | 852168 | 1 | · Bracket | | |
| 82 | 819067 | 1 | · Brace | | |
| 83 | 819068 | 1 | · Washer | | |
| 84 | 940090 | 2 | · Washer | | |
| 85 | 955246 | 2 | · Screw | | |
| 86 | 946577 | 2 | · Lock nut | | |
| 87 | 852363 | 1 | · Lever | | |
| 88 | 955270 | 2 | · Screw | | |
| 89 | 955948 | 2 | · Lock washer | | |
| 90 | 955781 | 2 | · Nut | | |
| 91 | 833462 | 1 | · Cube | | |
| 92 | 955892 | 1 | · Washer | | |
| 93 | 17276 | 1 | · Cotter pin | | |
| 94 | 873087 | 1 | · Oil dipstick | | |
| 95 | 925055 | 1 | · O-ring | | |
| 96 | 875704 | 1 | Gasket kit | | SEE GROUP 99 |