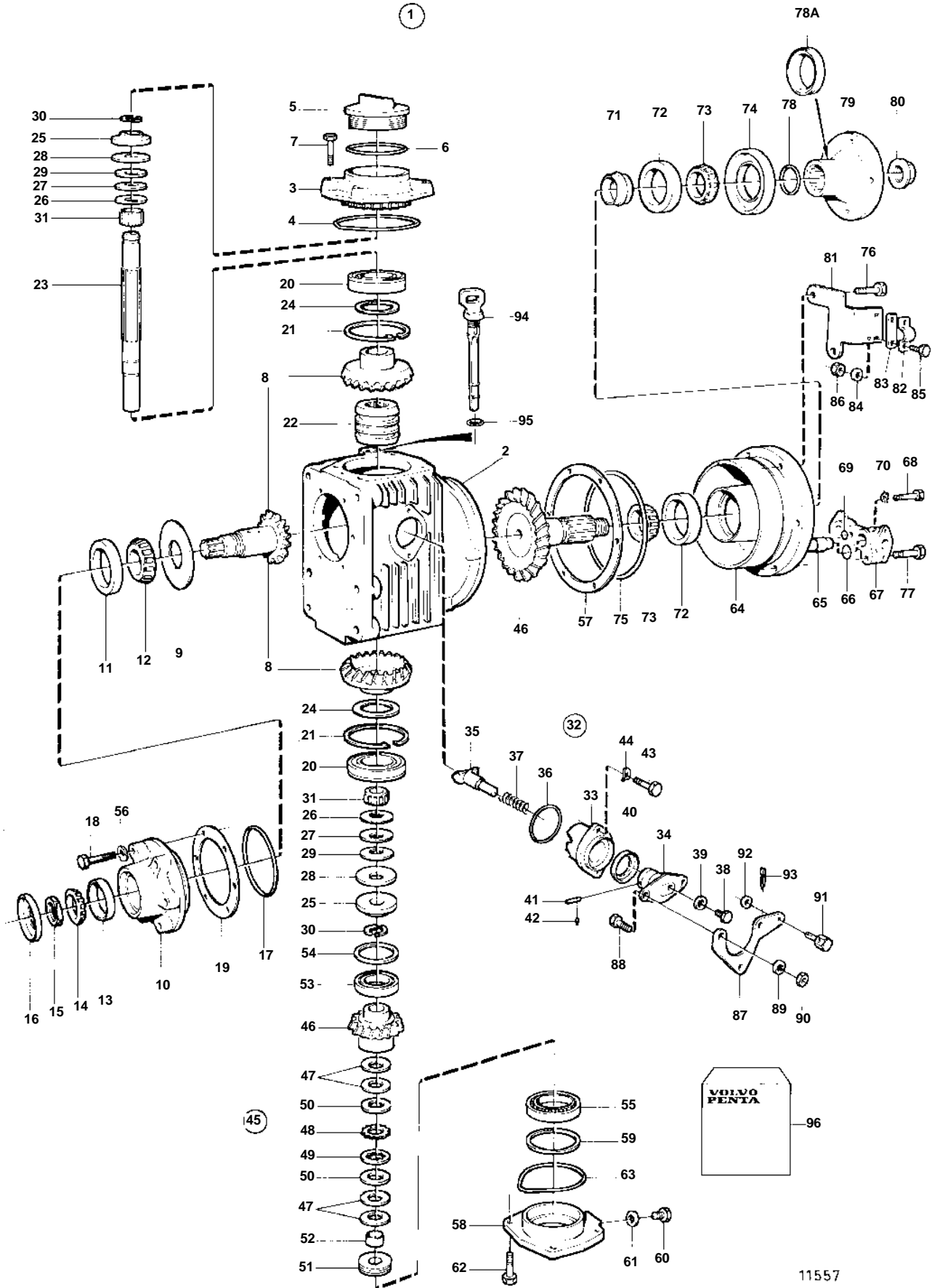


MS2A-E



MS2A-E

REF	PART NO.	QTY	DESCRIPTION	SEE SEC.	NOTES
1	873077	1	Reversing gear	SO	
2	873092	1	• Gear housing		
3	873123	1	• Cover		
4	949962	1	• O-ring		Included in gasket kit.
5	851754	1	• Oil filler cap		
6	1664473	1	• O-ring		(925254). Included in gasket kit.
7	946671	4	• Flange screw		
8	873095	1	• Gear set		
9	851621	1	• Guide disc		
10	872710	1	• Bearing box		
11	181302	1	• Cup		
12	181301	1	• Inner ring		
13	183750	1	• Cup		
14	183752	1	• Inner ring		
15	852485	1	• Lock nut		
16	873094	1	• Sealing ring		
17	925093	1	• O-ring		
18	940101	6	• Screw		
19	851622	X	• Shim		TH = 0,10mm
	851623	X	• Shim		TH = 0.15mm
	851624	X	• Shim		TH=0.35mm
20	851756	2	• Bearing		
21	852190	2	• Lock ring		
22	873098	1	• Sliding sleeve		
23	873099	1	• Shaft		
24	941835	X	• Shim		TH = 0,05mm, D = 71mm
	852184	X	• Shim		TH = 0,05mm, D = 43mm
	84219	X	• Shim		TH = 0,10mm
	949776	X	• Shim		TH = 0.15mm
	84218	X	• Spacer		TH=0.35mm
25	852079	2	• Lock washer		
26	852311	2	• Washer		TH=0,40mm
27	852317	2	• Washer		TH = 0,80mm
28	852213	2	• Disc spring		
29	852080	6	• Disc spring		
30	851629	4	• Lock ring half		
31	851757	2	• Needle bearing		
32	851661	1	• Shift mechanism		
33	851662	1	• • Bearing housing		
34	897816	1	• • Eccentric piston		
			• • Bulletin P-44-1-7	P-44-1-7-EN	Shift mechanism, eccentric piston
35	851664	1	• • Dog		
36	925065	1	• • O-ring		Included in gasket kit.
37	814184	1	• • Spring		
38	897711	1	• • Screw		
39	897871	X	• • Shim		TH=0,20mm
40	873291	1	• • Sealing ring		Included in gasket kit.
41	942871	1	• • Pin		
42	951924	1	• • Tensioning din		
43	955296	2	• Screw		
44	941907	2	• Spring washer		
45	852319	1	• Gear set		
46		2	• • Gear		
47		4	• • Washer		
48		18	• • Discouter		
49		17	• • Discinner		
50		2	• • Thrust washer		
51		1	• • Adjuster screw		
52		1	• • Bushing		
53	183518	1	• Bearing		

MS2A-E

REF	PART NO.	QTY	DESCRIPTION	SEE SEC.	NOTES
54	851705	X	· Shim		TH = 0,10mm
	851706	X	· Shim		TH = 0.15mm
	851707	X	· Shim		TH=0.35mm
55	183842	1	· Roller bearing		
56	941906	6	· Spring washer		
57	851702	X	· Shim		TH = 0,10mm
	851703	X	· Shim		TH = 0.15mm
	851704	X	· Shim		TH=0.35mm
58	873124	1	· Bearing cover		
59	87655	X	· Shim		TH = 0,10mm
	191840	X	· Shim		TH = 0.15mm
	87654	X	· Spacer		TH=0.35mm
60	960629	1	· Plug		
61	947084	1	· Gasket		Included in gasket kit.
62	946671	4	· Flange screw		
63	925256	1	· O-ring		Included in gasket kit.
64	873125	1	· Bearing housing		
65	852159	1	· Oil cooler		
66	943309	2	· O-ring		Included in gasket kit.
67	873212	1	· Pipe connection		
68	948081	1	· Screw		L=55mm (955279)
69	949750	1	· O-ring		Included in gasket kit.
70	941906	1	· Spring washer		
71	851974	1	· Collet		
72	181302	2	· Cup		
73	181301	2	· Inner ring		
74	873100	1	· Sealing ring		Included in gasket kit.
75	925262	1	· O-ring		Included in gasket kit.
76	946470	2	· Flange screw		L=35mm
	947760	2	· Flange screw		
77	965180	2	· Flange screw		
78	949721	1	· O-ring		(925062). Included in gasket kit.
78A	944138	1	· Sealing ring		Included in gasket kit.
79	852076	1	· Companion flange		
80	947855	1	· Lock nut		
81	852168	1	· Bracket		
82	819067	1	· Brace		
83	819068	1	· Washer		
84	940090	2	· Washer		
85	955246	2	· Screw		
86	946577	2	· Lock nut		
87	852363	1	· Lever		
88	955270	2	· Screw		
89	955948	2	· Lock washer		
90	955781	2	· Nut		
91	833462	1	· Cube		
92	955892	1	· Washer		
93	17276	1	· Cotter pin		
94	873087	1	· Oil dipstick		
95	925055	1	· O-ring		
96	875704	1	Gasket kit		SEE GROUP 99