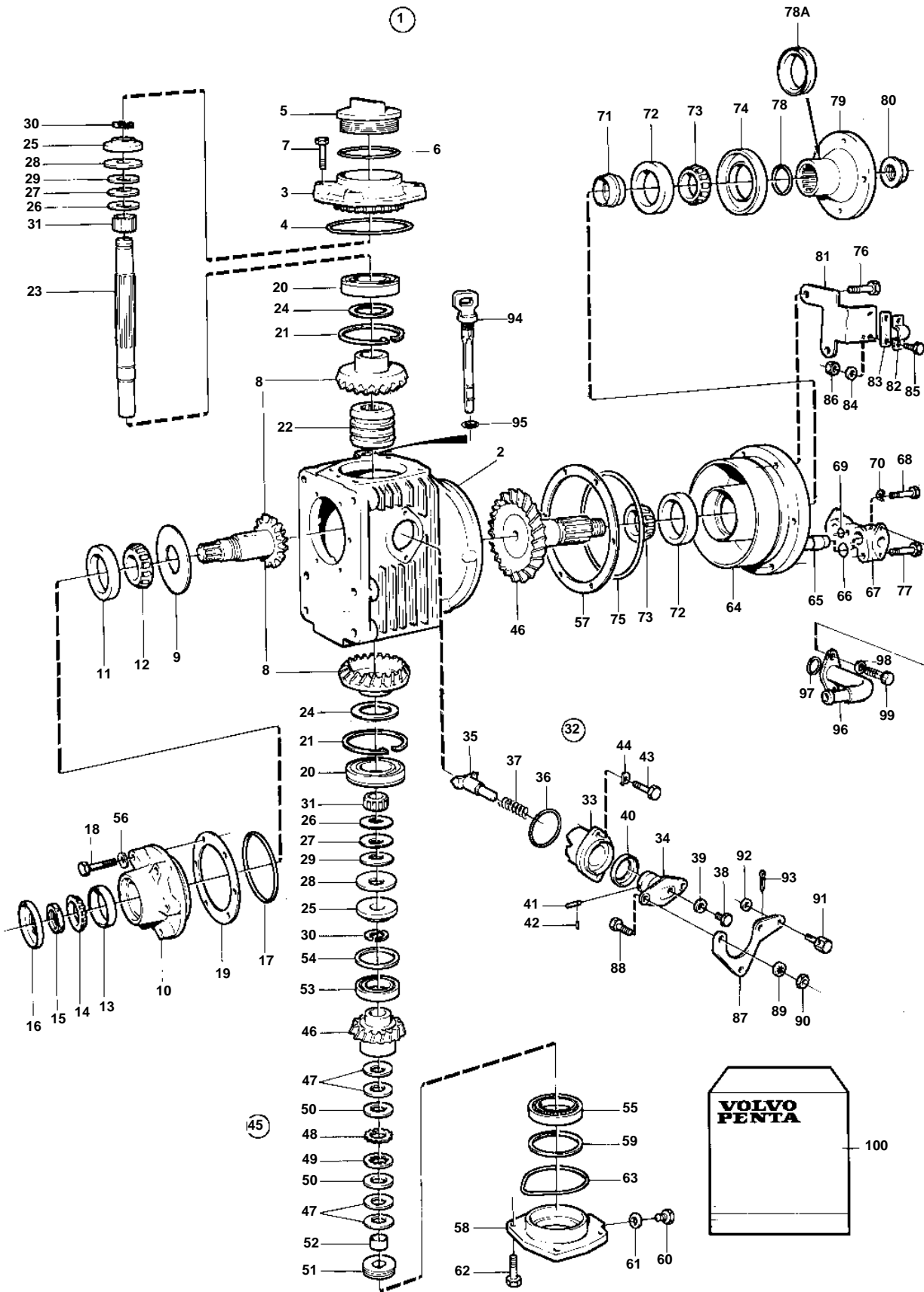


MS2L-E



16133

MS2L-E

REF	PART NO.	QTY	DESCRIPTION	NOTES
1	3856823	1	Reversing gear	RATIO 2.7:1
2	3856827	1	• Gear housing	(873092)
3	873123	1	• Cover	
4	949962	1	• O-ring	
5	851754	1	• Oil filler cap	
6	1664473	1	• O-ring	Included in gasket kit.
7	946470	4	• Flange screw	
8	873095	1	• Gear set	
9	851621	1	• Guide disc	
10	872710	1	• Bearing box	
11	181302	1	• Cup	
12	181301	1	• Inner ring	
13	183750	1	• Cup	
14	183752	1	• Inner ring	
15	852485	1	• Lock nut	
16	873094	1	• Sealing ring	
17	925093	1	• O-ring	
18	940101	6	• Screw	
19	851622	X	• Shim	TH = 0,10mm
	851623	X	• Shim	TH = 0.15mm
	851624	X	• Shim	TH=0.35mm
20	851756	2	• Bearing	
21	852190	2	• Lock ring	
22	873098	1	• Sliding sleeve	
23	873099	1	• Shaft	
24	941835	X	• Shim	D = 71mm, TH = 0,05mm
	852184	X	• Shim	D=43mm, TH=0,05mm
	84219	X	• Shim	TH = 0,10mm
	949776	X	• Shim	TH = 0.15mm
	84218	X	• Spacer	TH=0.35mm
25	852079	2	• Lock washer	
26	852311	2	• Washer	
27	852317	2	• Washer	
28	852213	2	• Disc spring	
29	852080	6	• Disc spring	
30	851629	4	• Lock ring half	
31	851757	2	• Needle bearing	
32	851661	1	• Shift mechanism	
33	851662	1	• • Bearing housing	
34	3856008	1	• • Eccentric piston	
	973593	1	• • Pin	
35	851664	1	• • Dog	
36	949659	1	• • O-ring	Included in gasket kit.
37	814184	1	• • Spring	
38	897711	1	• • Screw	
39	897871	X	• • Shim	TH=0,20mm
40	853868	1	• • Sealing ring	Included in gasket kit.
41	942871	1	• • Pin	
42	973593	1	• • Pin	
43	965215	2	• Screw	
44	941907	2	• Spring washer	
45	3887469	1	• Gear set	
46		1	• • Gear	
		1	• • Pinion	
47		4	• Spring	
48		18	• Disc	
49		17	• Disc	
50		2	• Thrust washer	
51		1	• Adjuster screw	
52		1	• Bushing	
53	183518	1	• Bearing	
54	851705	X	• Shim	TH = 0,10mm
	851706	X	• Shim	TH = 0.15mm

MS2L-E

REF	PART NO.	QTY	DESCRIPTION	NOTES
54	851707	X	• Shim	TH=0.35mm
55	183842	1	• Roller bearing	
56	941906	6	• Spring washer	
57	851702	X	• Shim	TH = 0,10mm
	851703	X	• Shim	TH = 0.15mm
	851704	X	• Shim	TH=0.35mm
58	873129	1	• Bearing cover	
59	87655	X	• Shim	TH = 0,10mm
	191840	X	• Shim	TH = 0.15mm
	87654	X	• Spacer	TH=0.35mm
60	960629	1	• Plug	
61	947084	1	• Gasket	Included in gasket kit.
62	946470	4	• Flange screw	
63	925256	1	• O-ring	Included in gasket kit.
64	873130	1	• Bearing housing	
65	853940	1	• Oil cooler	
66	943309	2	• O-ring	Included in gasket kit.
67	873212	1	• Pipe connection	
68	969357	1	• Flange screw	
69	949750	1	• O-ring	Included in gasket kit.
70	941906	1	• Spring washer	
71	851974	1	• Collet	
72	181302	2	• Cup	
73	181301	2	• Inner ring	
74	873100	1	• Sealing ring	Included in gasket kit.
75	925262	1	• O-ring	Included in gasket kit.
76	946470	2	• Flange screw	L=35mm
	947760	2	• Flange screw	L=40mm
77	965180	2	• Flange screw	L=60mm
78	949721	1	• O-ring	Included in gasket kit.
78A	944138	1	• Sealing ring	Included in gasket kit.
79	852076	1	• Companion flange	
80	947855	1	• Lock nut	
81	852168	1	• Bracket	
82	819067	1	• Brace	
83	819068	1	• Washer	
84	940090	2	• Washer	
85	969407	2	• Screw	
86	949874	2	• Lock nut	
87	852363	1	• Lever	
88	955270	2	• Screw	
89	955948	2	• Lock washer	
90	955781	2	• Nut	
91	833462	1	• Cube	
92	955892	1	• Washer	
93	17276	1	• Cotter pin	
94	873087	1	• Oil dipstick	
95	925055	1	• O-ring	
96	873150	2	• Coolant pipe	
97	842913	2	• Sealing ring	
98	941906	4	• Spring washer	
99	955270	4	• Screw	
100	875704	1	Gasket kit	