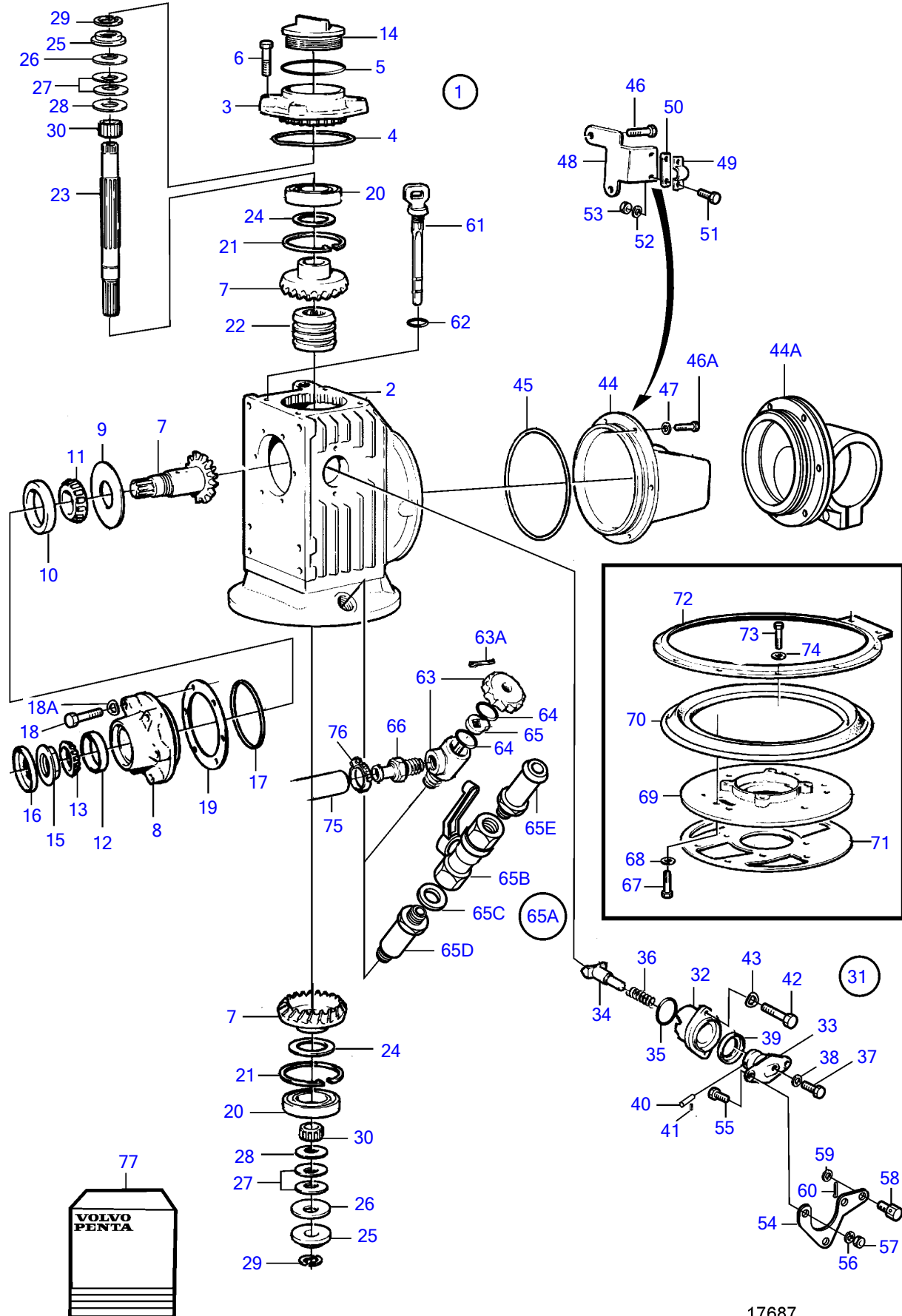


120S-D



120S-D

REF	PART NO.	QTY	DESCRIPTION	SEE SEC.	NOTES
1	873104	1	Gear		Repl by 3856830
	3856830	1	Upper gear		
2	873085	1	• Gear housing		Repl by 3856831
	3856831	1	• Gear housing		
3	873123	1	• Cardboard tube		
4	949962	1	• O-ring		Included in gasket kit.
5	1664473	1	• O-ring		Included in gasket kit.
6	946671	4	• Flange screw		
	946470	4	• Flange screw		For 3856830 L=35mm
7	873095	1	• Gear set		
8	872710	1	• Bearing box		
9	851621	1	• Turntable		
10	181302	1	• Cup		
11	181301	1	• Inner ring		
12	183750	1	• Cup		
13	183752	1	• Cone		
14	851754	1	• Filler cap		
15	(852485)	1	• Lock nut		Obsolete part
16	873094	1	• Sealing ring		Included in gasket kit.
17	925093	1	• O-ring		Included in gasket kit.
18	940101	6	• Hexagon screw		
18A	941906	6	• Spring washer		
19	851622	X	• Adjusting washer		TH=0.10mm
	851623	X	• Adjusting washer		TH=0.15mm
	851624	X	• Adjusting washer		TH=0.35mm
20	851756	2	• Bearing		
21	852190	2	• Lock ring		
22	873098	1	• Sliding sleeve		(851626)
23	873099	1	• Shaft		
24	852184	X	• Shim		TH=0.05mm
	84219	X	• Shim		TH=0.10mm
	949776	X	• Shim		TH=0.15mm
	84218	X	• Shim		TH=0.35mm
25	852079	2	• Lock washer		
26	852213	2	• Disc spring		
27	852080	6	• Disc spring		
28	852311	2	• Washer		TH=0,40mm
	852317	2	• Washer		TH=0,80mm
29	851629	4	• Lock ring half		
30	851757	2	• Needle bearing		
31	851661	1	• Shift mechanism		
32	851662	1	• • Bearing housing		
33	3856008	1	• • Plunger		
34	851664	1	• • Dog		
35	949659	1	• • O-ring		Included in gasket kit., (925065)
36	814184	1	• • Spring		Obsolete part
37	897711	1	• • Screw		
38	897871	X	• • Shim		
39	853868	1	• • Sealing ring		Included in gasket kit., (873291)
40	942871	1	• • Clevis pin		
41	973593	1	• • Spring pin		(951924)
42	955296	2	• Hexagon screw		
43	941907	2	• Spring washer		
44	873149	1	• Bracket		For 873104
44A	3857187	1	• Bracket		For 3856830
45	925262	1	• O-ring		Included in gasket kit.
46	945444	6	• Flange screw		For 873149
46A	946470	6	• Flange screw		For 3857187 L=35mm
47	955894	2	• Washer		
48	852074	1	• Cable attachment		For 873149
	852168	1	• Bracket		For 3857187
49	21471054	1	• Bracket		
50	819068	1	• Washer		

7746800-44-213

17687

Upd:2012-05-07

120S-D

REF	PART NO.	QTY	DESCRIPTION	SEE SEC.	NOTES
51	955246	2	• Hexagon screw		
52	940090	2	• Washer		
53	946577	2	• Lock nut		
54	852363	1	• Intermediate lever		
55	955270	2	• Hexagon screw		
56	955948	2	• Toothed washer		
57	955781	2	• Hexagon nut		
58	3852329	1	• Cube		(804312)
59	955892	1	• Washer		
60	17276	1	• Split pin		
61	873087	1	• Dipstick		
62	925055	1	• O-ring		
63	851777	1	• Faucet		
63A	949791	1	• • Split pin		
64	955989	2	• • O-ring		
65	851783	1	• • Lock washer		
65A			• Tap		For 3856830
65B	1140097	1	• Ball valve		
65C	947626	1	• Gasket		
65D	873173	1	• Nipple		
65E	873317	1	• Nipple		
66	873088	1	• Nipple		
67	946541	3	• Hex. socket screw		
68	941670	3	• Washer		
69	852719	1	• Intermediate section		
70		1	• Sealing strip		Included in mounting kit 854934.
71	3856834	1	Gasket		Included in mounting kit 854934., Included in complete drive., (853892)
72	873126	1	Tensioning ring		Included in complete drive.
73	946730	10	Hexagon screw		Included in complete drive.
74	941670	10	Washer		Included in complete drive.
75		X	Hose	2442	
76		1	Hose clamp	2442	
77	876391	1	Gasket kit		See group 99
	3856597	1	Mounting kit		See group 99 (854934)