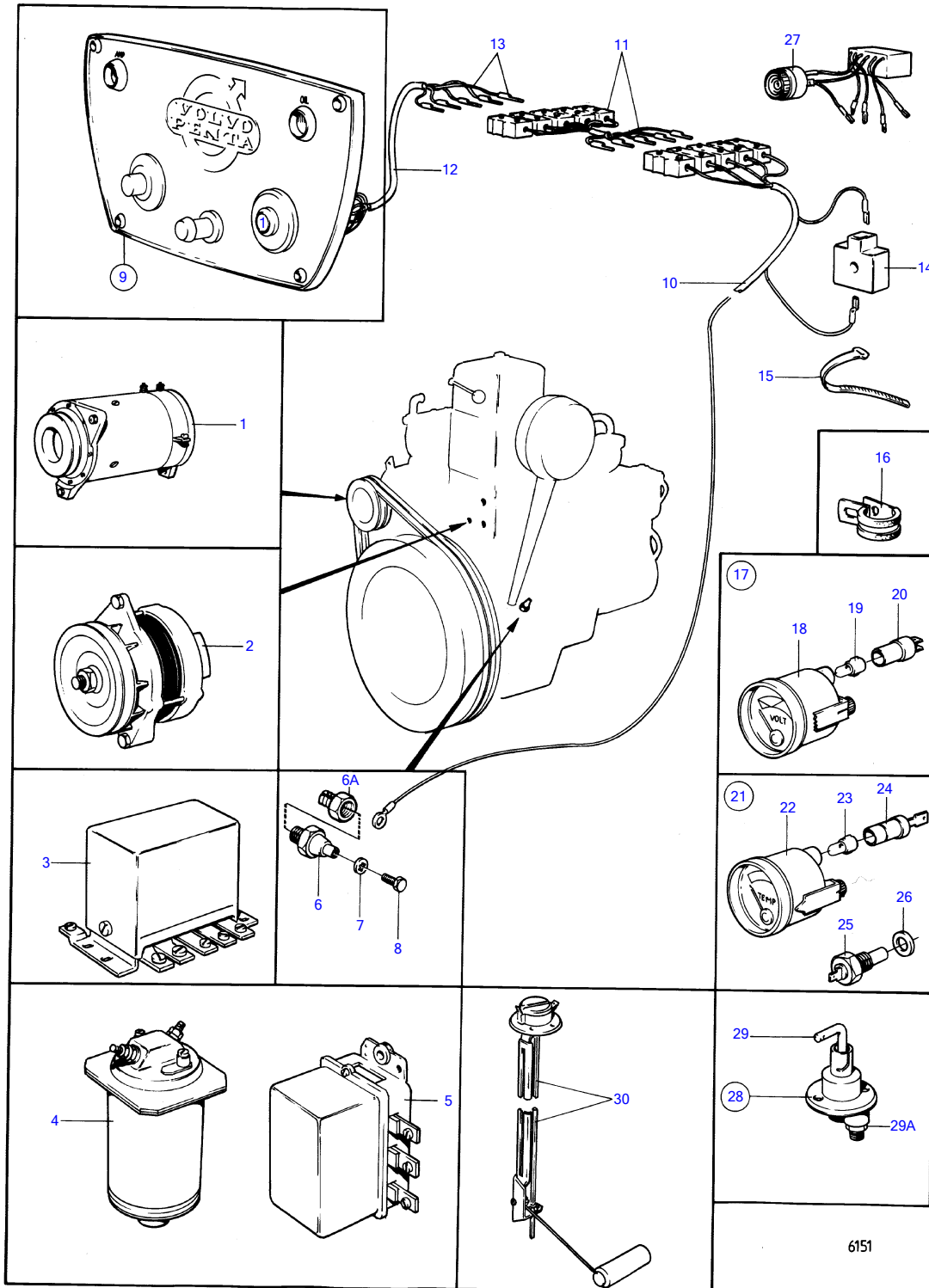


MD1B



6151

MD1B

REF	PART NO.	QTY	DESCRIPTION	SEE SEC.	NOTES
1		1	dynamo and installation components	13794	
2	(833456)	1	Alternator	13795	Obsolete part
3		1			Replaced by 834693 + 834694.
	(834693)	1	Charge regulator		Obsolete part
	834694	1	Starter relay		
4	(870730)	1	Actuator solenoid		Obsolete part, Starter cut-out relay for unlimited battery capacity.
5	(239964)	1	Governor		Obsolete part, Starter cut-out relay for unlimited battery capacity.
6	807078	1	Pressure monitor		
6A	(945612)	1	Nipple		Obsolete part, Spec 867141, 867142.
7	955945	1	Toothed washer		
8	190663	1	Screw		
9	(819678)	1	Instrument plate		Obsolete part
			.	13789	
10	(833608)	1	Cable trunk		Obsolete part
11	(833618)	1	Extension cable'verl		Obsolete part, L=2000mm
	(833619)	1	Extension cable'verl		Obsolete part, L=5000mm
12		1	cable unit		
13		X	cables and terminals	13791	
14	824823	1	Fuse box		
15	948210	X	Cable tie		(827353)
16	942022	1	Clamp		
17	(834397)	1	Voltmeter		Obsolete part
18	(834374)	1	• Voltmeter		Obsolete part
19	19923	1	• Bulb		
20	808175	1	• Lamp socket		
21	(840228)	1	Temperature gauge ki		Obsolete part
22	(841233)	1	• Thermometer		Obsolete part, (831475)
23	19923	1	• Bulb		
24	(808174)	1	• Lamp socket		Obsolete part
25	840074	1	• Temperature sensor		
26	957181	1	• Gasket		
27	(827940)	1	Alarm kit		Obsolete part, See group 9
28	870980	1	Main switch		
29	243700	1	• Handle		
29A	955783	2	• Hexagon nut		
30	(834400)	1	Tank gauge, drinking water		Obsolete part, See group 9