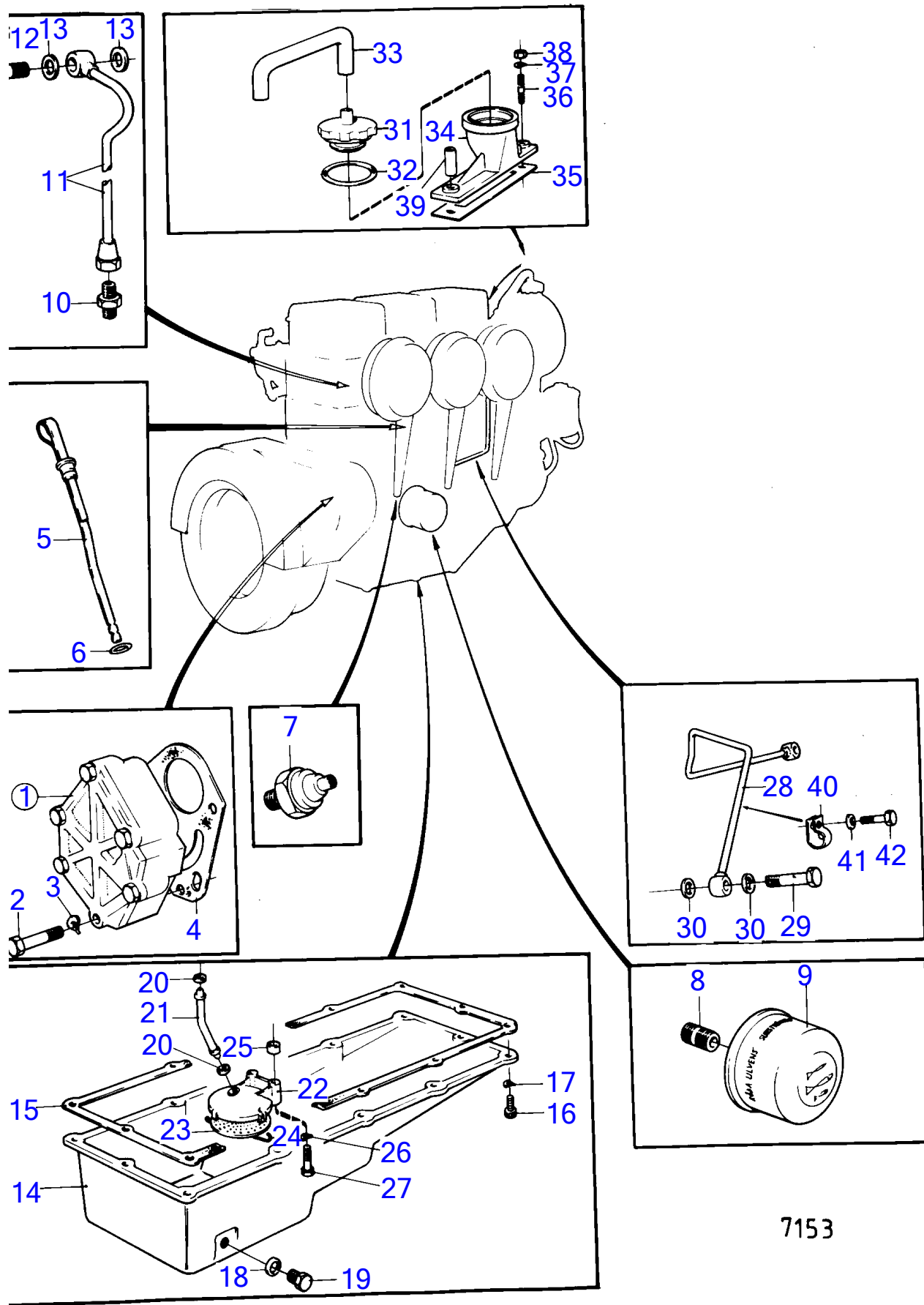


MD17C



7153

## MD17C

REF	PART NO.	QTY	DESCRIPTION	SEE SEC.	NOTES
1	833852	1	Oil pump		REPL BY 829730
				15093	
	829730	1	Oil pump		OBSOLETE PART
				15093	
2	947235	3	Screw		
3	941907	3	Spring washer		
4	833856	1	Gasket		
5	833704	1	Oil dipstick		FOR MD3 AND MD17C/110S., MD17D/120S., OBSOLETE PART
	833980	1	Oil dipstick		OBSOLETE PART
6	946742	1	O-ring		
7	829587	1	Switch		SEE GROUP 3
8	418440	1	Nipple	15102	OBSOLETE PART
9	897321	1	Oil filter		
10	829590	3	Nipple	15102	OBSOLETE PART
11	807128	3	Pipe		OBSOLETE PART
12	74033	3	Hollow screw	15088	
13	957171	6	Gasket		
14	833071	1	Oil pan		OBSOLETE PART, FOR MD3 AND MD17C/110S., MD17D/120S.
	833981	1	Oil pan		OBSOLETE PART
15	833047	1	Gasket		
16	959220	12	Hex. socket screw		
17	941907	12	Spring washer		
18	957184	1	Gasket		FOR MD3 AND MD17C/110S.
19	914392	1	Plug		FOR MD3 AND MD17C/110S., MD17D/120S.
20	829714	2	Sealing ring		
21	833091	1	Drain pipe		OBSOLETE PART, FOR MD3 AND MD17C/110S., MD17D/120S.
	833990	1	Drain pipe		OBSOLETE PART
22	833089	1	Housing		OBSOLETE PART
23	418288	1	Strainer		OBSOLETE PART
24	418289	1	Lock brace		OBSOLETE PART
25	807425	2	Spacer sleeve		EXCL 110S, 120S
26	941907	2	Spring washer		
27	955299	2	Hexagon screw		FOR MD3 AND MD17C/110S., MD17D/120S.
	955304	2	Hexagon screw		
28	833126	1	Tube		SEE GROUP 2C
29	48634	2	Hollow screw		
30	907132	4	Gasket		
31	418954	1	Vent cover	15100	
32	940096	1	Gasket		
			.	15100	
33	833671	1	Rubber hose	15100	OBSOLETE PART
34	833601	1	Ventilation housing		OBSOLETE PART
35	803361	X	Gasket		
			.	15100	
36	924061	2	Stud		
37	941907	2	Spring washer		
38	955782	2	Hexagon nut	15100	
39	833111	1	Spacer sleeve	15100	OBSOLETE PART
40	940374	1	Clamp	15100	
41	955293	1	Hexagon screw		
42	941907	1	Spring washer		