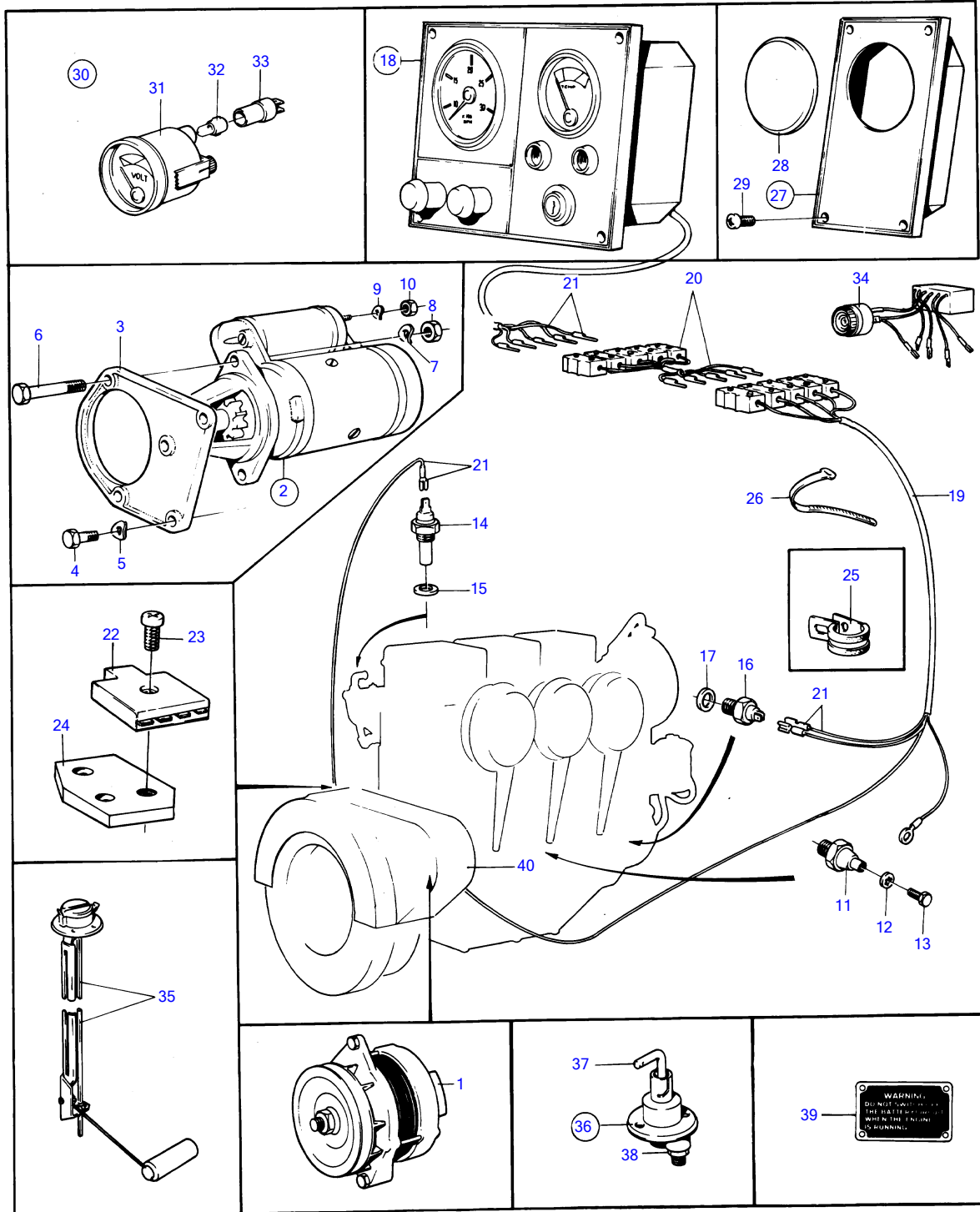


MD17D



7147

MD17D

| REF | PART NO. | QTY | DESCRIPTION | SEE SEC. | NOTES |
|-----|----------|-----|--|----------|---|
| 1 | | 1 | ALTERNATOR AND INSTALLATION COMPONENTS | 15143 | |
| 2 | 833669 | 1 | Starter motor | | MO 1763- |
| | 3803073 | 1 | Starter motor, exch, exch | | MO 1763- |
| 3 | 833037 | 1 | Bracket | | OBSOLETE PART |
| 4 | 955319 | 3 | Hexagon screw | | |
| 5 | 941908 | 3 | Spring washer | | |
| 6 | 955344 | 2 | Hexagon screw | | |
| | 955345 | 2 | Hexagon screw | | MD17C SPEC 867600. MD17D SPEC 867684., L = 55 MM |
| 7 | 940280 | 2 | Spring washer | | |
| 8 | 955784 | 2 | Hexagon nut | | |
| 9 | 941907 | 1 | Spring washer | | |
| 10 | 955782 | 1 | Hexagon nut | | |
| 11 | 829587 | 1 | Switch | | SEE GROUP 2A |
| 12 | 955945 | 1 | Toothed washer | | |
| 13 | 190663 | 1 | Screw | | |
| 14 | 840074 | 1 | Temperature sensor | | MO-18902, SPEC 867681, -682, -683. |
| | 827151 | 1 | Temperature sensor | | MO 18903-, SPEC 867681, -682, -683. |
| | 827151 | 1 | Temperature sensor | | MD17C/HD-HE SPEC 867600, MD17D/HD-HE SPEC 867684. |
| 15 | 18840 | 1 | Gasket | | |
| 16 | 1502028 | 1 | Tachometer sensor | | |
| 17 | 957181 | 1 | Gasket | | |
| 18 | 840529 | 1 | Instrument panel | | MO 18403-, OBSOLETE PART |
| 19 | 833607 | 1 | Cable trunk | | OBSOLETE PART |
| 20 | 833618 | X | Extension cable\verl | | L = 2000 MM, OBSOLETE PART |
| | 833619 | X | Extension cable\verl | | L = 5000 MM, OBSOLETE PART |
| 21 | | X | CABLES AND TERMINALS | 15139 | |
| 22 | 824823 | 1 | Fuse box | | MO 1036- |
| 23 | 950024 | 1 | Cross recessed screw | | MO 1036- |
| 24 | 829739 | 1 | Bracket | | SPEC 867422,-423,-426,-427,-428., OBSOLETE PART |
| 25 | 952628 | 1 | Clamp | | |
| 26 | 948210 | X | Cable tie | | (827353) |
| 27 | 840013 | 1 | Instrument panel | | OBSOLETE PART |
| 28 | 839128 | 1 | • Plastic plug | | |
| 29 | 944540 | 4 | • Screw | | |
| 34 | 827940 | 1 | Alarm kit | | SEE GROUP 9 |
| 35 | 834400 | 1 | Tank gauge | | SEE GROUP 9, OBSOLETE PART |
| 36 | 870980 | 1 | Main switch | | |
| 37 | 243700 | 1 | • Handle | | |
| 38 | 955783 | 2 | • Hexagon nut | | |
| 39 | 821042 | 1 | Sign | | OBSOLETE PART |