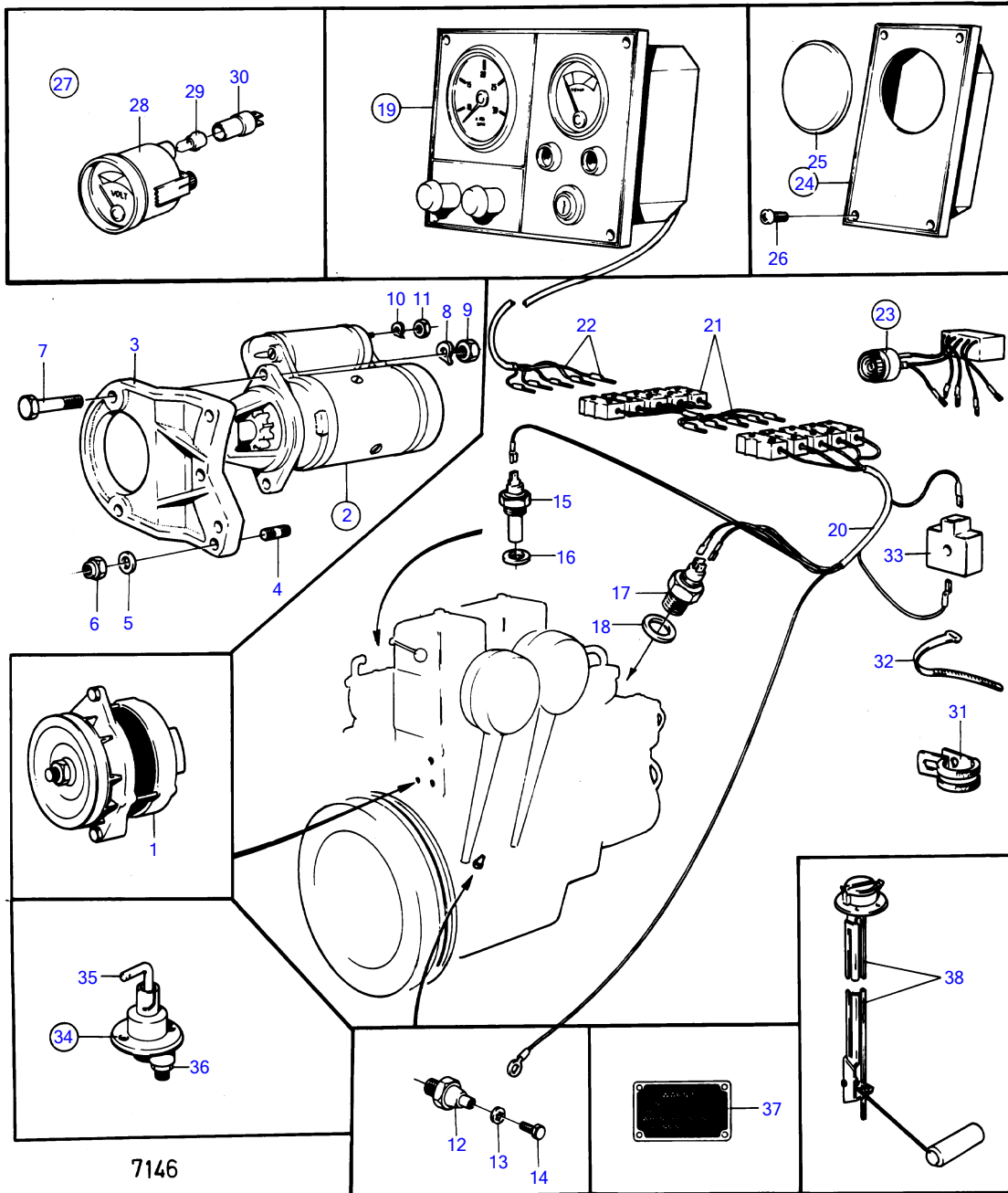


MD11C



MD11C

| REF | PART NO. | QTY | DESCRIPTION | SEE SEC. | NOTES |
|-----|----------|-----|--|----------|--|
| 1 | | 1 | ALTERNATOR AND INSTALLATION COMPONENTS | | |
| | | | | 15142 | |
| 2 | 833669 | 1 | Starter motor | | MO 17001-41790 |
| | 3803073 | 1 | Starter motor, exch, exch | | MO 17001-41790 |
| | | | . | 15136 | |
| | 838060 | 1 | Starter motor | | MO 41791- |
| | 3803077 | 1 | Starter motor, exch, exch | | MO 41791- |
| | | | . | 15136 | |
| 3 | 833335 | 1 | Bracket | | OBSOLETE PART |
| 4 | 946928 | 1 | Stud | | SEE GROUP 2A, OBSOLETE PART |
| 5 | 946075 | 1 | Washer | | |
| 6 | 963107 | 1 | Lock nut | | |
| 7 | 955344 | 2 | Hexagon screw | | |
| 8 | 940280 | 2 | Spring washer | | |
| 9 | 955784 | 2 | Hexagon nut | | |
| 10 | 941907 | 1 | Spring washer | | |
| 11 | 955782 | 1 | Hexagon nut | | |
| 12 | 829587 | 1 | Switch | | |
| 13 | 955945 | 1 | Toothed washer | | |
| 14 | 190663 | 1 | Screw | | |
| 15 | 840074 | 1 | Temperature sensor | | |
| | 827151 | 1 | Temperature sensor | | MD11C/HD-HE SPEC 867577. MD11D/HD-HE SPEC 867677, -678. |
| 16 | 18840 | 1 | Gasket | | |
| 17 | 1502028 | 1 | Tachometer sensor | | |
| 18 | 957181 | 1 | Gasket | | |
| 19 | 833908 | 1 | Instrument panel | | REPLACED BY 840529., MO 28201-55699, OBSOLETE PART |
| | | | . | 15137 | |
| | | | . | 15138 | |
| 20 | 833612 | 1 | Cable trunk | | FOR ENGINE WITH ALTERNATOR AND STARTER MOTOR, OBSOLETE PART |
| | 833612 | 1 | Cable trunk | | FOR ENGINE WITH ALTERNATOR AND STARTER MOTOR, SPEC 867421, -498, -499, -540., MO-52480, OBSOLETE PART |
| | 829926 | 1 | Cable trunk | | FOR ENGINE WITH ALTERNATOR AND STARTER MOTOR, SPEC 867421, -498, -499, -540., MO 52481-, OBSOLETE PART |
| 21 | 833618 | X | Extension cable'verl | | L = 2000 MM, OBSOLETE PART |
| | 833619 | X | Extension cable'verl | | L = 5000 MM, OBSOLETE PART |
| 22 | | X | CABLES AND TERMINALS | 15139 | |
| 23 | 827940 | 1 | Alarm kit | | SEE GROUP 9 |
| 24 | 840013 | 1 | Instrument panel | | OBSOLETE PART |
| 25 | 839128 | 1 | • Plastic plug | | |
| 26 | 944540 | 4 | • Screw | | |
| 27 | 834397 | 1 | Voltmeter | | OBSOLETE PART |
| 28 | 834374 | 1 | • Voltmeter | | OBSOLETE PART |
| 29 | 19923 | 1 | • Bulb | | |
| 30 | 808175 | 1 | • Lamp socket | | |
| 31 | 941950 | 1 | Clamp | | |
| 32 | 948210 | X | Cable tie | | (827353) |
| 33 | 824823 | 1 | Fuse box | | |
| 34 | 870980 | 1 | Main switch | | |
| 35 | 243700 | 1 | • Handle | | |
| 36 | 955783 | 2 | • Hexagon nut | | |
| 37 | 821042 | 1 | Sign | | OBSOLETE PART |
| 38 | 834400 | 1 | Tank gauge | | OBSOLETE PART SEE GROUP 9 |