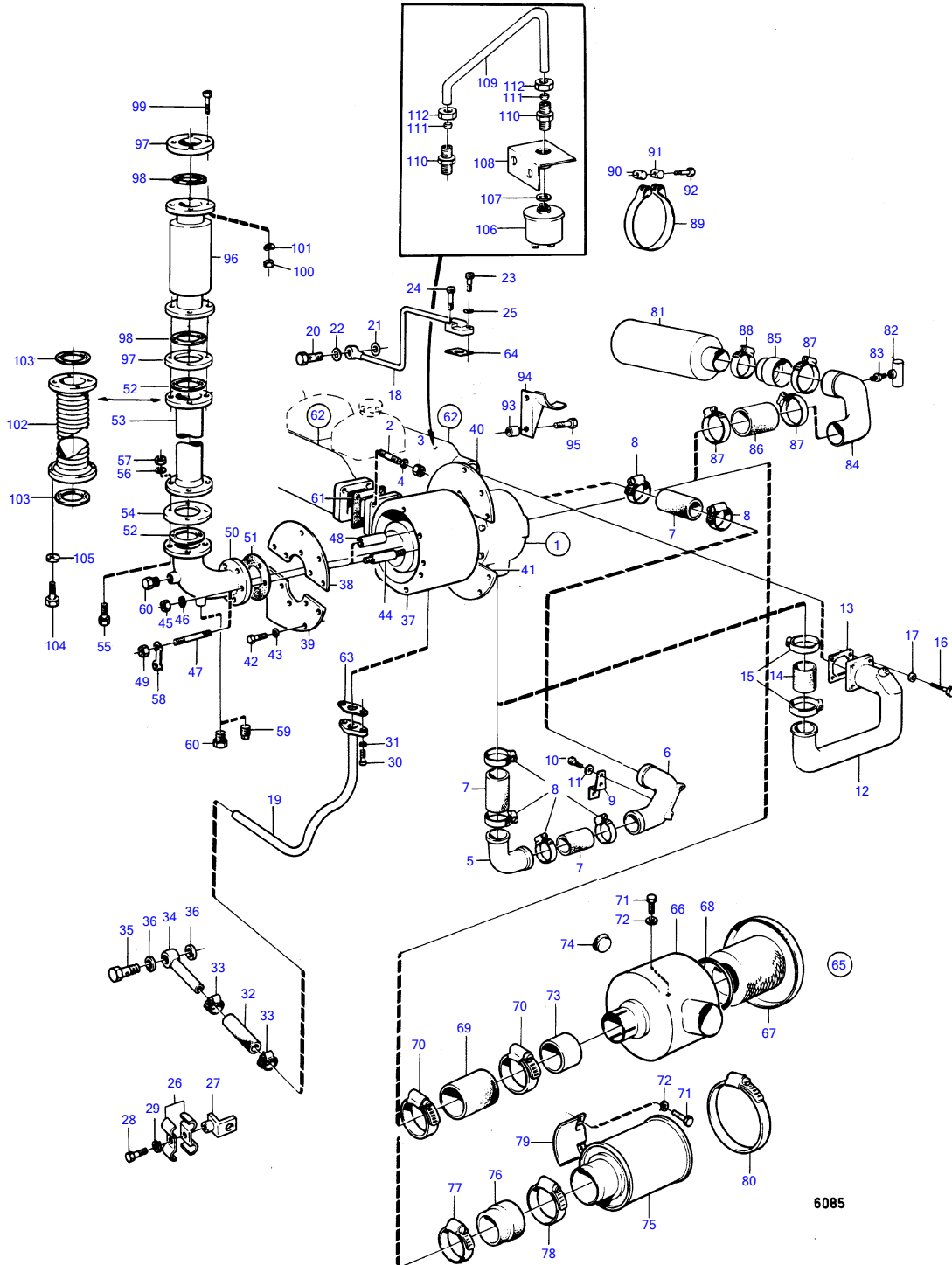


TMD100A



6085

TMD100A

REF	PART NO.	QTY	DESCRIPTION	SEE SEC.	NOTES
1		1			Shaft and spacer ring 910396 replaces early type without spacer ring
			.	13976	
		1			Replaced by 1ea 4804105, 1ea 350578., MO21083/XXXX- - MO-65143/XXXX
			.	13977	
	837455	1	Turbocharger		MO65144/XXXX-
			.	13977	
2	953261	4	Stud		
3	943152	4	Nut		
4	942336	4	Spring washer		
5	(820789)	1	Riser		MO-65138/XXXX, Obsolete part
6	(820790)	1	Riser		MO-65138/XXXX, Obsolete part
7	952986	X	Hose		MO-65138/XXXX L=3X60mm
8	943482	6	Hose clamp		(951799) MO-65138/XXXX
9	(820834)	1	Bracket		MO-65138/XXXX, Obsolete part
10	940113	2	Hexagon screw		MO-65138/XXXX
11	941907	2	Spring washer		MO-65138/XXXX
12	(837561)	1	Connection pipe		MO65139/XXXX-, Obsolete part
13	466271	1	Gasket		MO65139/XXXX-
14	952986	X	Hose		MO65139/XXXX-
15	943482	2	Hose clamp		MO65139/XXXX- (951799)
16	956570	4	Hex. socket screw		MO65139/XXXX-
17	941907	4	Spring washer		MO65139/XXXX-
18	(896704)	1	Tube		MO-21082/XXXX, Obsolete part
	(823543)	1	Tube		MO21083/XXXX-, Obsolete part
19	(896705)	1	Tube		MO-21082/XXXX, Obsolete part
	(823544)	1	Oil return pipe		MO21083/XXXX-, Obsolete part
20	942589	1	Hollow screw		
21	942703	1	Gasket		
22	957181	1	Gasket		
23	956584	1	Hex. socket screw		
24	956585	1	Hex. socket screw		
25	942336	2	Spring washer		
26	820851	2	Clamp		
27	(820853)	1	Bracket		Obsolete part
28	940100	1	Hexagon screw		
29	941906	1	Spring washer		
30	940115	2	Hexagon screw		
31	942336	2	Spring washer		
32	192358	X	Hose		L=90mm
33	943474	2	Hose clamp		
34	(896780)	1	Tube		Obsolete part
35	191929	1	Hollow screw		
36	957185	2	Gasket		
37	(820609)	1	Heat shield		MO-21082/XXXX, Obsolete part
	(823352)	1	Heat shield		MO21083/XXXX-, Obsolete part
38	(820608)	1	Cover plate		MO-21082/XXXX, Obsolete part
	(823241)	1	Protecting plate		MO21083/XXXX-, Obsolete part
39	(820607)	1	Cover plate		MO-21082/XXXX, Obsolete part
	(823242)	1	Protecting plate		MO21083/XXXX-, Obsolete part
40	(823243)	1	Protecting plate		MO21083/XXXX-, Obsolete part
41	(823244)	1	Protecting plate		MO21083/XXXX-, Obsolete part
42	940113	10	Hexagon screw		MO-21082/XXXX
	940113	20	Hexagon screw		MO21083/XXXX-
43	941907	10	Spring washer		MO-21082/XXXX
	941907	20	Spring washer		MO21083/XXXX-
44	(821631)	6	Spacer screw		MO-21082/XXXX, Obsolete part
45	955827	6	Hexagon nut		MO-21082/XXXX
46	942336	6	Spring washer		MO-21082/XXXX
47	953272	6	Stud		MO21083/XXXX-
48	820916	6	Spacer sleeve		MO21083/XXXX-

TMD100A

REF	PART NO.	QTY	DESCRIPTION	SEE SEC.	NOTES
49	943152	6	Nut		MO21083/XXXX-
50	(820883)	1	Exhaust riser		MO-21082/XXXX, Obsolete part
	(823336)	1	Exhaust riser		MO21083/XXXX-, Obsolete part
51	411710	1	Gasket		
52	807578	2	Gasket		
53	820900	1	Exhaust hose		L=590mm
54	807625	1	Flange		
55	955592	4	Hexagon screw		
56	941912	4	Spring washer		
57	955829	4	Hexagon nut		
58	15193	3	Tab washer		MO21083/XXXX-
59	952358	1	Plug		D70B spec. 867055, 867056, 867057 MOXXXXX/6622-. D70B spec. 867061, 867063, 867277. TD70B spec. 867065. D70B spec. 867059, 867260 alt. D70BK alt., MO-21082/XXXX
60	192154	2	Plug		MO21083/XXXX-
61	417382	1	Gasket		D42A PP spec. 16053, 867638.
62			induction and exhaust manifold with installation components	13975	
63	417381	1	Gasket		D42A PP spec. 16053, 867638.
64	417378	1	Gasket		D42A PP spec. 16053, 867638.
65	(821369)	1	Air filter		MO-XXXX/27455, Obsolete part
66		1	• housing		
67	820655	1	• Insert		
68	(820656)	1	• Gasket		Obsolete part
69	(13516)	X	Hose		L=100mm MO-XXXX/27455, Obsolete part
70	943483	2	Hose clamp		MO-XXXX/27455 (951800)
71	955512	2	Hexagon screw		
72	941906	2	Spring washer		
73	(820880)	1	Gasket		MO-XXXX/27455, Obsolete part
74	662620	2	Rubber button		MO-XXXX/27455
75	842280	1	Air filter		MOXXXX/27456-
76	843409	1	Fitting		MOXXXX/27456-
77	943483	1	Hose clamp		MOXXXX/27456-
78	943484	1	Hose clamp		MOXXXX/27456-
79	(843431)	1	Bracket		MOXXXX/27456-, Obsolete part
80	942921	1	Hose clamp		MOXXXX/27456-
81	823701	1	Air filter		Spec 867107
82	842037	1	Pressure drop indica		Spec 867107
83	191095	1	Nipple		Spec 867107
84	(822813)	1	Tube		Spec 867107, Obsolete part
85	(340921)	1	Hose		Spec 867107, Obsolete part
86	(13516)	X	Hose		Spec 867107 L=100mm, Obsolete part
87	943483	3	Hose clamp		Spec 867107 (951800)
88	943484	1	Hose clamp		Spec 867107 (951801)
89	821028	2	Tensioning band		Spec 867107
90	31404	2	Clevis pin, threaded		Spec 867107
91	31405	2	Pin		Spec 867107
92	31406	2	Hexagon screw		Spec 867107
93	(820507)	4	Spacer sleeve		Spec 867107 L=40mm, Obsolete part
94	(824276)	2	Bracket		Spec 867107, Obsolete part
95	959793	4	Hexagon screw, screw		Spec 867107
				13975	
96	827021	1	Muffler, muffler		Spec 867107, 9749 L=1370mm
97	(842005)	2	Weld flange		MO21083/XXXX-, Obsolete part
98	807578	2	Gasket		MO21083/XXXX-
99	955591	8	Hexagon screw		MO21083/XXXX-
100	955829	8	Hexagon nut		MO21083/XXXX-
101	941912	8	Spring washer		MO21083/XXXX-
102		1	compensator		Water pump shaft length=203mm., L=85mm early type
	(843087)	1	Compensator, compensator		MO21083/XXXX- L=85mm, Obsolete part

TMD100A

REF	PART NO.	QTY	DESCRIPTION	SEE SEC.	NOTES
					Late type
		1	compensator		Spec.9969, 867113., L=185mm early type
	843088	1	Compensator, compensator		MO21083/XXXX- L=185mm
					Late type
103	807578	2	Gasket		MO21083/XXXX-
104	955591	8	Hexagon screw		Early type
	955365	8	Hexagon screw		Late type
105	941912	8	Spring washer		
106	837782	1	Pressure sensor		MOXXXX/26944-
					See group 3
107	957181	1	Gasket		MOXXXX/26944-
					See group 3
108	843698	1	Bracket		MOXXXX/26944-
109	(843700)	1	Tube		MOXXXX/26944-, Obsolete part
110	954379	2	Nipple		MOXXXX/26944-
111	954365	2	Fitting		MOXXXX/26944-
112	954357	2	Fitting nut		MOXXXX/26944-