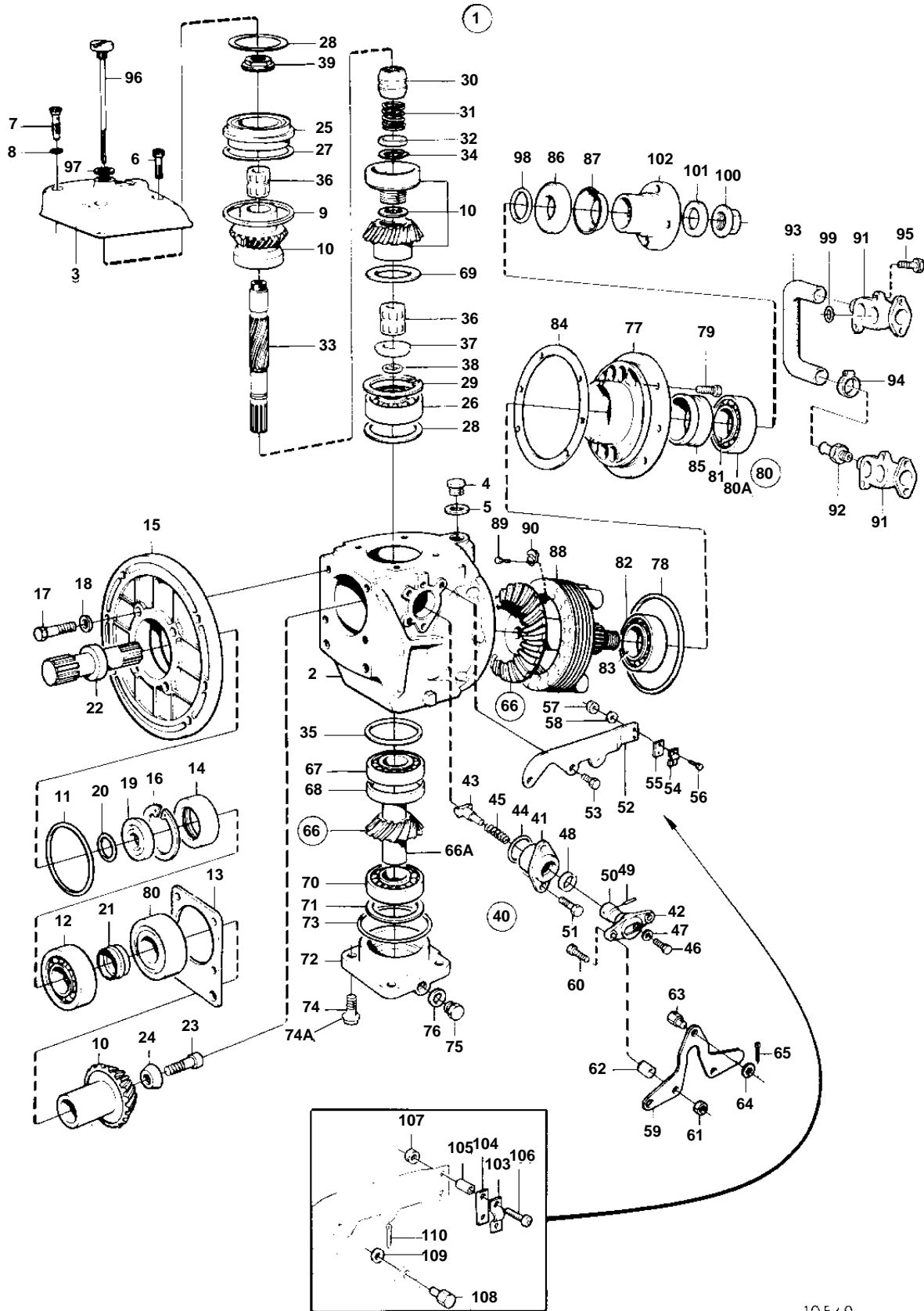


MS5B



10549

MS5B

REF	PART NO.	QTY	DESCRIPTION	SEE SEC.	NOTES
1	854907	1	Reversing gear		RATIO 2,40:1
2	853374	1	• Gear housing		
3	854676	1	• Gear housing cover		
4	814179	1	• Plug		
5	897682	1	• Gasket		
6	956585	3	• Screw		
7	814643	1	• Hollow screw		
8	955989	1	• O-ring		
9	832669	1	• Gasket		
10	853917	1	• Gear set		
11	925095	1	• O-ring		
12	183247	1	• Bearing		
13	853063	X	• Adjusting washer		TH = 0,10 MM
	853064	X	• Adjusting washer		TH = 0,15 MM
	853065	X	• Adjusting washer		TH = 0,35 MM
14	853670	1	• Sealing ring		
15	853161	1	• Bearing housing		
16	914538	1	• Lock ring		
17	967636	6	• Screw		
18	949523	6	• Washer		
19	832675	1	• Washer		
20	956000	1	• O-ring		
21	853484	1	• Pretensioning sleeve		
22	850275	1	• Axle shaft		
23	854201	1	• Screw		
24	853026	1	• Washer		
25	854670	1	• Ball bearing		
26	853542	1	• Ball bearing		
27	943870	X	• Adjusting washer		TH = 0,20 MM
	946179	X	• Adjusting washer		TH = 0,10 MM
	943869	X	• Adjusting washer		TH = 0,05 MM
28	943866	X	• Adjusting washer		TH = 0,10 MM
	943867	X	• Adjusting washer		TH = 0,20 MM
	967557	X	• Adjusting washer		TH = 0,30 MM
	943868	X	• Adjusting washer		TH = 0,40 MM
29	850433	1	• Lock ring		
30	854222	1	• Sliding sleeve		
			• Bulletin P-44-1-8	P-44-1-8-EN	Shift mechanism, shift cone and shoe
31	813970	1	• Spring		
32	854126	1	• Washer		
33	853900	1	• Shaft		
34	951078	1	• Snap ring		
35	42980	X	• Shim		TH = 0,35 MM
	42981	X	• Shim		TH = 0,10 MM
	944522	X	• Shim		TH = 0,05 MM
36	853819	2	• Needle bearing		
37	854192	1	• Spacer ring		
38	853888	2	• Lock ring		
39	854228	1	• Nut		ALT, STD
	854229	1	• Nut		ALT, TH = 0,2 MM
	854230	1	• Nut		ALT, TH = 0,4 MM
	854265	1			ALT, TH = 0,6 MM
40	853198	1	• Shift mechanism		
41	851662	1	• • Bearing housing		
42	897816	1	• • Eccentric piston		
			• • Bulletin P-44-1-7	P-44-1-7-EN	Shift mechanism, eccentric piston
43	839646	1	• • Dog		
44	925065	1	• • O-ring		
45	814184	1	• • Spring		
46	897711	1	• • Screw		
47	897871	X	• • Adjusting washer		
48	958838	1	• • Sealing ring		

MS5B

REF	PART NO.	QTY	DESCRIPTION	SEE SEC.	NOTES
49	942871	1	• • Pin		
50	951924	1	• • Tensioning din		
51	965215	2	• Screw		
52	853180	1	• Bracket		
53	955294	2	• Screw		
54	819067	1	• Brace		
55	819068	1	• Washer		
56	955246	2	• Screw		
57	946577	2	• Lock nut		
58	940090	2	• Washer		
59	853922	2	• Lever		
60	955276	2	• Screw		
61	946035	2	• Lock nut		
62	853921	2	• Spacer tube		
63	804312	1	• Cube		
64	955892	1	• Washer		
65	17276	1	• Cotter pin		
66	853911	1	• Drive gear set		RATIO 2,40:1
66A		1	• • SLIDING CLUTCH		
67	181301	1	• Cone		
68	181302	1	• Cup		
69	949071	X	• Adjusting washer		TH = 0,10 MM
	949073	X	• Adjusting washer		TH = 0,35 MM
	949072	X	• Adjusting washer		TH = 0,15 MM
70	184649	1	• Bearing		
71	967352	X	• Adjusting washer		TH = 0,05 MM
	967351	X	• Adjusting washer		TH = 0,15 MM
	941823	X	• Adjusting washer		TH = 0,10 MM
	941824	X	• Adjusting washer		TH = 0,20 MM
	941825	X	• Adjusting washer		TH = 0,40 MM
72	854097	1	• Bearing cover		
73	925257	1	• O-ring		
74	946472	4	• Screw		
74A	941906	4	• Spring washer		
75	960629	1	• Plug		
76	947084	1	• Gasket		
77	853366	1	• Bearing housing		
78	943244	1	• O-ring		
79	963220	6	• Screw		
80	853949	2	• Roller bearing		
80A	854165	2	• • Cup		REPL BY 853949
81	854166	2	• • Cone		REPL BY 853949
82	183327	1	• Cone		
83	183328	1	• Cup		
84	853370	X	• Adjusting washer		TH = 0,10 MM
	853369	X	• Adjusting washer		TH = 0,15 MM
	853368	X	• Adjusting washer		TH = 0,35 MM
85	852696	1	• Sleeve		
86	853757	1	• Sealing ring		
87	944530	1	• Ring		
88	853394	1	• Oil cooler		
89	959187	4	• Screw		
90	853361	2	• Retainer		
91	854268	2	• Connector		
92	969497	2	• Nipple		
93	854116	1	• Hose		
94	961665	2	• Hose clamp		
95	965213	4	• Screw		
96	839351	1	• Oil dipstick		
97	955974	1	• O-ring		
98	925063	1	• O-ring		
99	960169	4	• O-ring		

MS5B

REF	PART NO.	QTY	DESCRIPTION	SEE SEC.	NOTES
100	947855	1	• Lock nut		
101	850471	1	• Washer		
102	853481	1	• Flange		
103	819067	1	• Brace		FOR TWIN CONTROL STATIONS.
104	819068	1	• Washer		FOR TWIN CONTROL STATIONS.
105	853921	2	• Spacer tube		FOR TWIN CONTROL STATIONS.
106	956083	2	• Screw		FOR TWIN CONTROL STATIONS.
107	965483	2	• Nut		FOR TWIN CONTROL STATIONS.
108	804312	1	• Cube		FOR TWIN CONTROL STATIONS.
109	955892	1	• Washer		FOR TWIN CONTROL STATIONS.
110	17276	1	• Cotter pin		FOR TWIN CONTROL STATIONS.