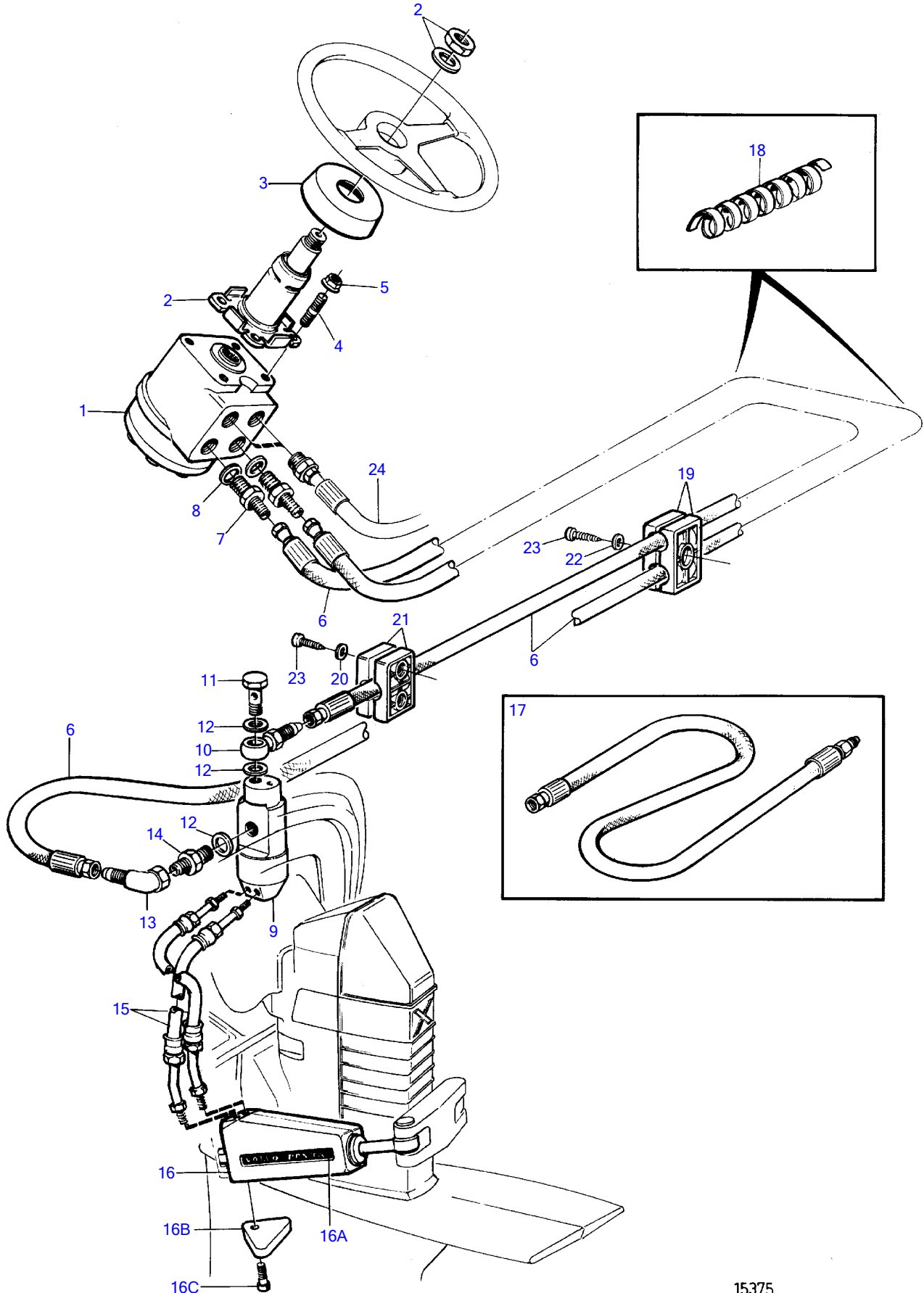


DPX



DPX

REF	PART NO.	QTY	DESCRIPTION	SEE SEC.	NOTES
1	872155	1	Pump unit		
2	872157	1	Steering column		
3	873357	1	Cover		
4	924085	4	Stud		
5	971095	4	Flange nut		
6	872158	2	Pressure hose		L=6.0m
7	873340	2	Adapter		
8	873341	2	Washer		
9	872956	1	Grommet		
10	873325	1	Banjo nipple		
11	873326	1	Hollow screw		
12	873327	3	Washer		
13	873328	1	Adapter		
14	873329	1	Adapter		
15	872593	4	Hydraulic hose		
16	3861557	2	Steering cylinder		Mounted on interm. housing of the drive unit and connected to the hook up fork., (873231)
16A	872965	2	Decal		
16B	872793	2	Zinc electrode		
16C	963683	2	• Hex. socket screw		
17	872169	1	Pressure hose		L=1,0m
18	873331	1	Coil		
19	873335	1	Clamp		
20	873337	1	Washer		
21	873336	1	Clamp		
22	873338	1	Washer		
23	873339	3	Screw		
24	872158	2	Pressure hose	641	

7734180-64-639

15375

Upd:2012-01-30

KAD42P-A, KAMD42P-A, DPX, HS1A, DP-D1, DP-E, DP-G

VOLVO
PENTA