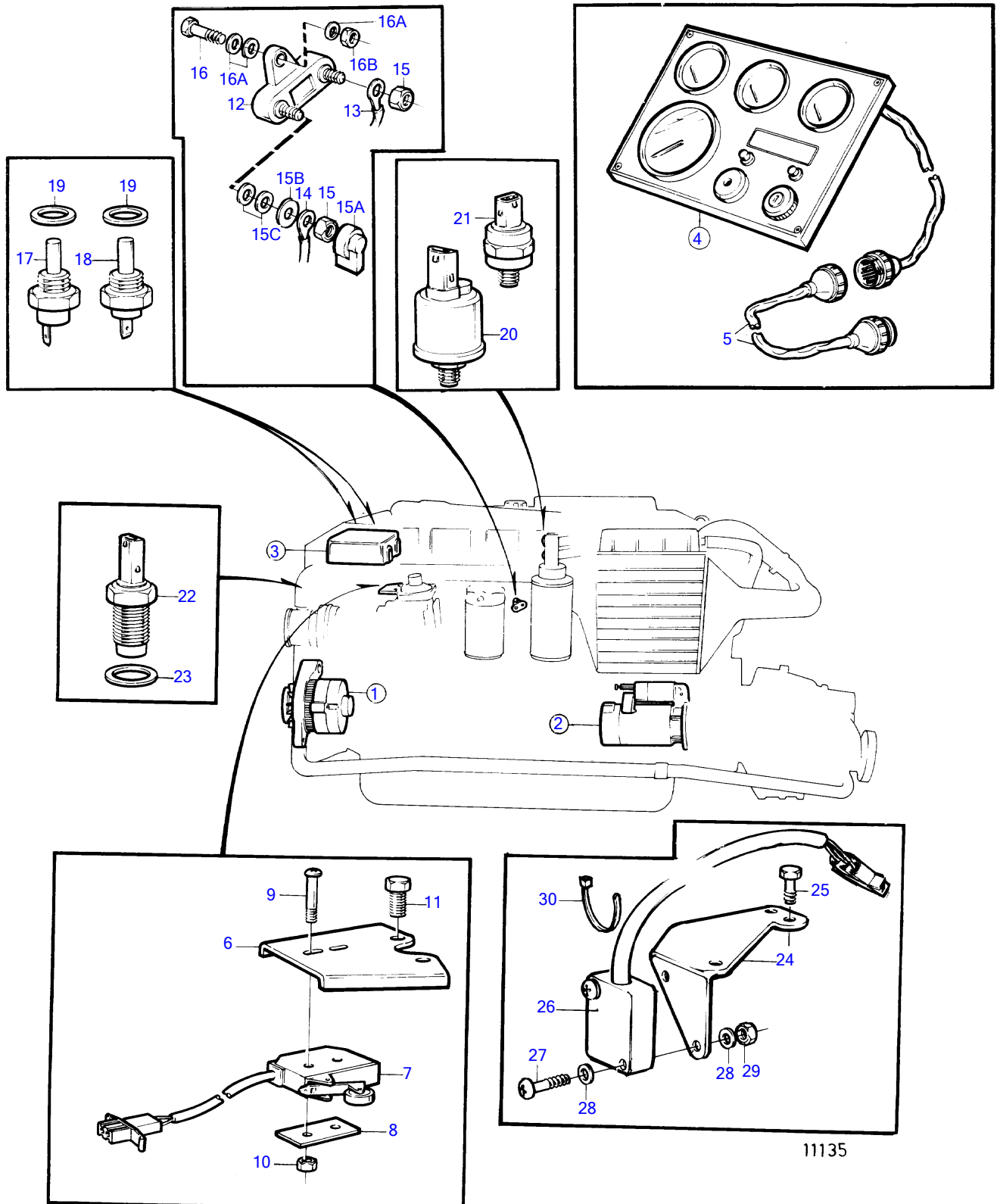


KAD42A



KAD42A

REF	PART NO.	QTY	DESCRIPTION	SEE SEC.	NOTES
1		1	alternator and installation components	20721	
2		1	starter motor and installation components	20723	
3		1	electrical box and installation components	20725	
4	864040	1	Instrument panel		
5	846648	X	Extension cable'verl		L=3000mm
	846649	X	Extension cable'verl		L=5000mm
	846650	X	Extension cable'verl		L=7000mm
6	860433	1	Bracket		SN-2204202416
7	860435	1	Microswitch		SN-2204202416
8		1	Attaching plate		
9	956050	2	Cross recessed screw		
10	955778	2	Hexagon nut		
11	965175	2	Flange screw		
12	856355	1	Fuse		
13		1	cabl kit		PT, see group 4A
14		1	cabl kit		PT, see group 4A
15	955781	2	Hexagon nut		
15A	1234326	1	Protecting casing		
15B	960140	1	Washer		
15C	955893	2	Washer		
16	947542	1	Flange screw		
16A	955893	3	Washer		
16B	945407	1	Flange nut		
17	833927	1	Thermo monitor		93°C
18	827151	1	Temperature sensor		40-120°C
	840074	1	Temperature sensor		For flybridge installations., Alt, see group 9
19	957181	2	Gasket		
20	862155	1	Oil pressure sensor		0-10 bar
	862568	1	Oil pressure sensor		For flybridge installations., Alt, see group 9
21	863169	1	Pressure monitor		0,7 bar
22	862251	1	Tachometer sensor		For revolution relay
23	957181	1	Gasket		
24	860970	1	Bracket		SN2204202417-
25	965175	1	Flange screw		
26	872597	1	Position sensor		SN2204202417-
27	956050	2	Cross recessed screw		
28	955890	4	Washer		
29	966650	2	Lock nut		
30	948210	X	Cable tie		