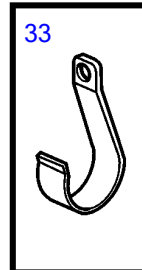
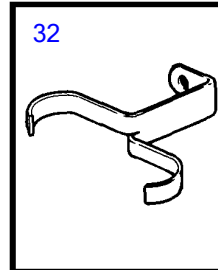
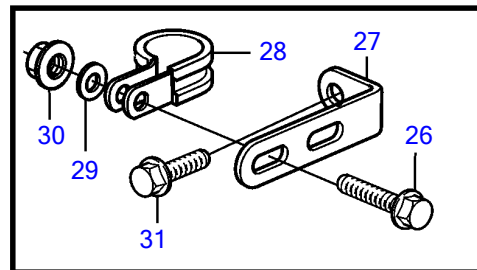
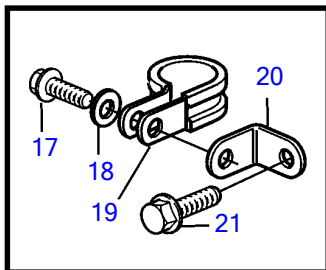
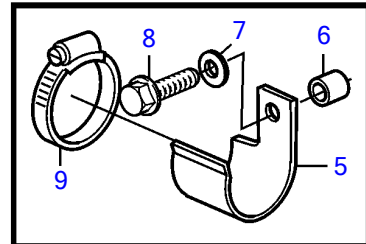
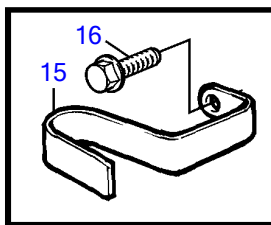
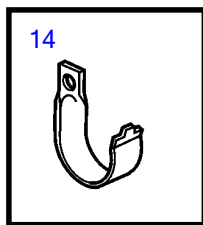
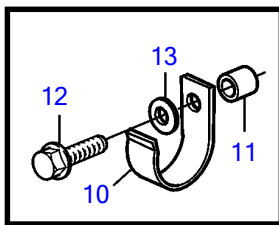
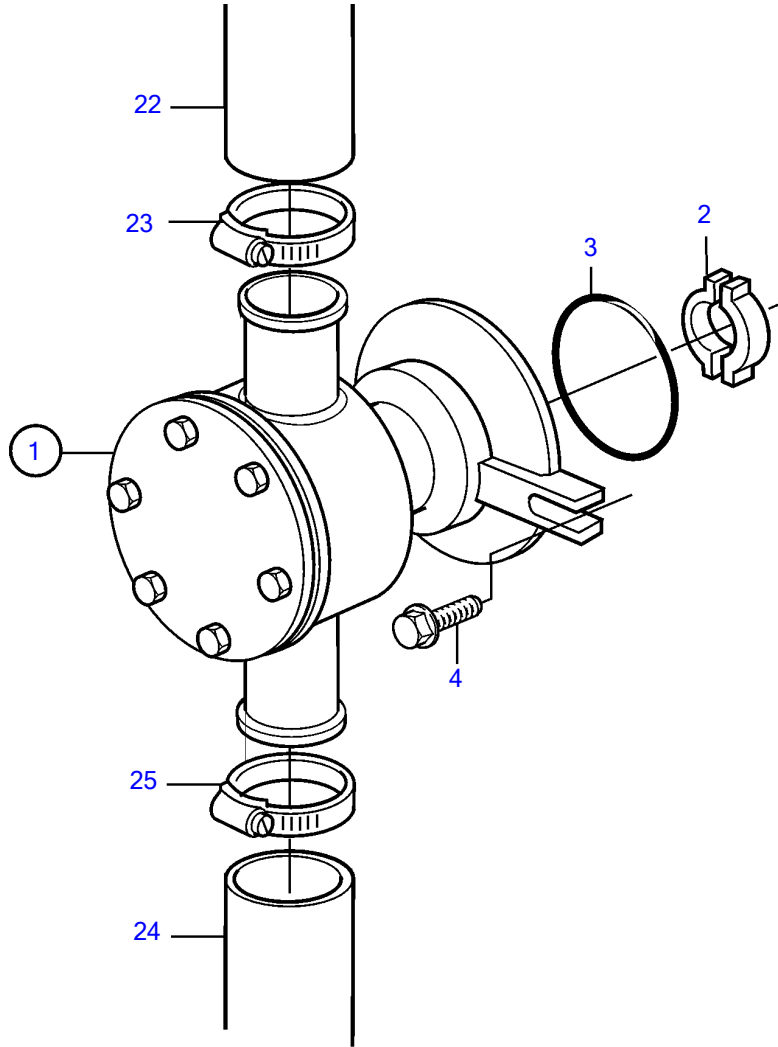


KAMD44P-A, KAMD44P-B, KAMD44P-C



KAMD44P-A, KAMD44P-B, KAMD44P-C

REF	PART NO.	QTY	DESCRIPTION	SEE SEC.	NOTES
1				3399	
	3581558	1	Sea water pump		Repl by 3583115
				3400	
	3583115	1	Sea water pump		
				3400	
2	858467	1	Companion flange		
3	968971	1	O-ring		
4	945444	2	Flange screw		
5	3580758	1	Bracket		
6	843075	1	Spacer sleeve		
7	955894	1	Washer		
8	945444	1	Flange screw		
9	961669	1	Hose clamp		
10	857045	2	Clamp		
11	843075	1	Spacer sleeve, inlet		L=16mm
	1660462	1	Spacer sleeve		
12	946671	1	Flange screw		L=30mm
	965180	1	Flange screw		L=60mm
13	955894	2	Washer		
14	834974	1	Clamp		
22	860997	1	Hose		Sea water pump-oil cooler.
	861335	1	Hose		Sea water pump-intercooler.
23	943476	1	Hose clamp		
24	861738	1	Hose		Reverse gear-sea water pump.
25	961669	2	Hose clamp		
26	946544	1	Flange screw		
27	965558	1	Bracket		
28	967645	1	Clamp		
29	955893	1	Washer		
30	949278	1	Flange lock nut		
31	947760	1	Flange screw		
32	3580794	1	Bracket		
33	3580798	1	Clamp		