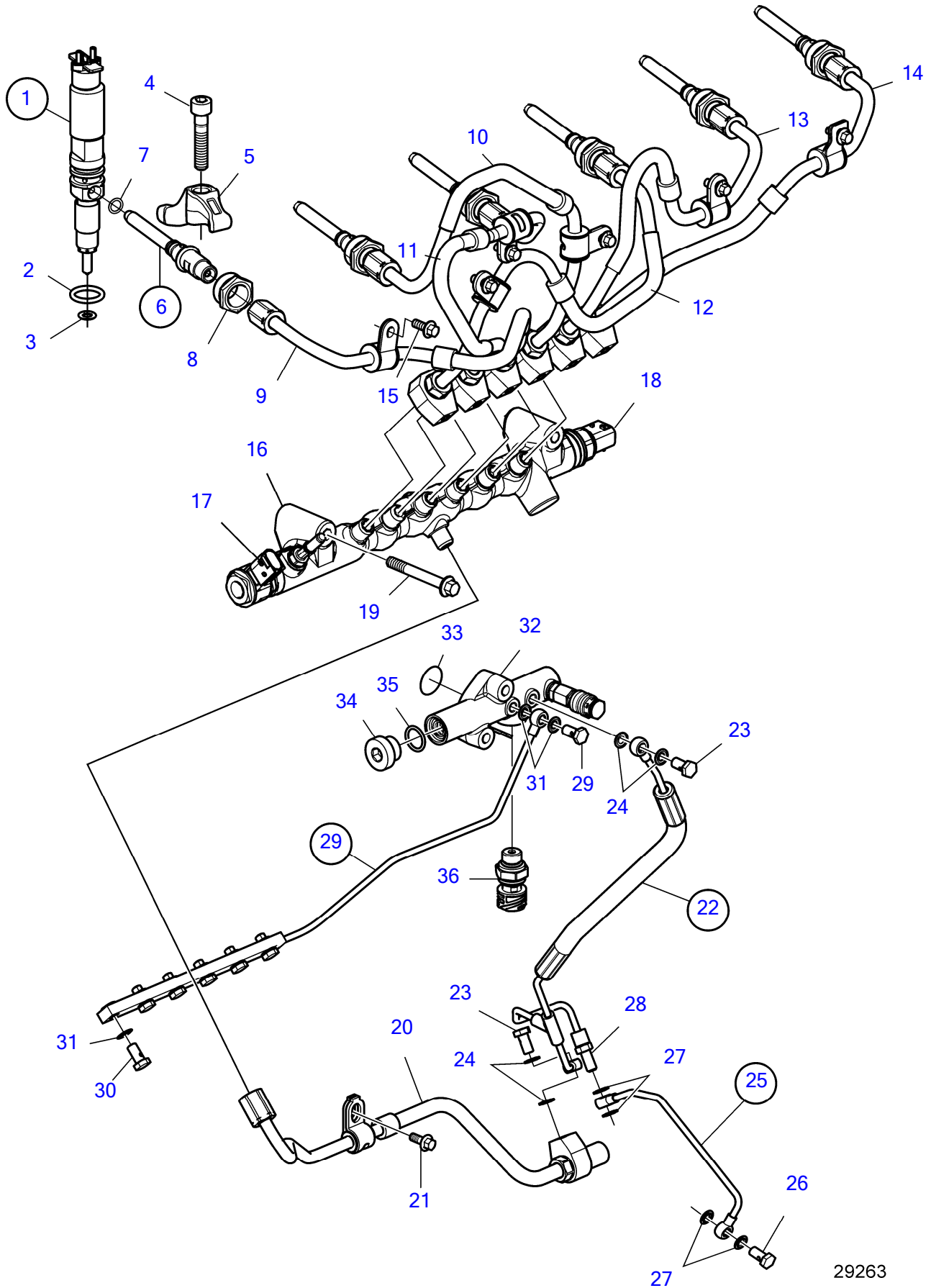


D8A3-A MP, D8A4-A MP



D8A3-A MP, D8A4-A MP

REF	PART NO.	QTY	DESCRIPTION	NOTES
1	3801736	6	Injector, exch	Replaced by 3801854
	22625707	6	Injector	Replaced by 23185947
	3801854	6	Injector, exch	
	23185947	6	Injector	
2	993664	6	• O-ring	
3	21857406	6	• Gasket	
4	21453372	6	Hex. socket screw	
5	22556900	6	Yoke	
6	21843299	6	Sleeve tube	
7	21442526	6	• Rubber ring	
8	21859185	6	Insert sleeve	
9	21614874	1	Fuel pipe	Injector 1
10	21614881	1	Fuel pipe	Injector 2
11	21614883	1	Fuel pipe	Injector 3
12	21614885	1	Fuel pipe	Injector 4
13	21614887	1	Fuel pipe	Injector 5
14	21614889	1	Fuel pipe	Injector 6
15	20730825	6	Flange screw	
16	22807245	1	Common rail	
17	21880675	1	• Relief valve	
18	21880678	1	• Pressure sensor	
19	994387	2	Flange screw	
20	22060772	1	Fuel pipe	
21	984725	1	Flange screw	
22	23347827	1	Pipe	
23	74033	2	• Hollow screw	
24	60111191	4	• Gasket	
25	22842810	1	Pipe	
26	74033	1	• Hollow screw	
27	60111191	4	• Gasket	
28	60112925	1	• Hollow screw	
29	22754407	1	Pipe	
30	74033	7	• Hollow screw	
31	60111191	14	• Gasket	
32	22813565	1	Chamber	
33	949656	1	• O-ring	
34		1	• Plug	
35	976039	1	• O-ring	
36	22899626	1	• Pressure sensor	