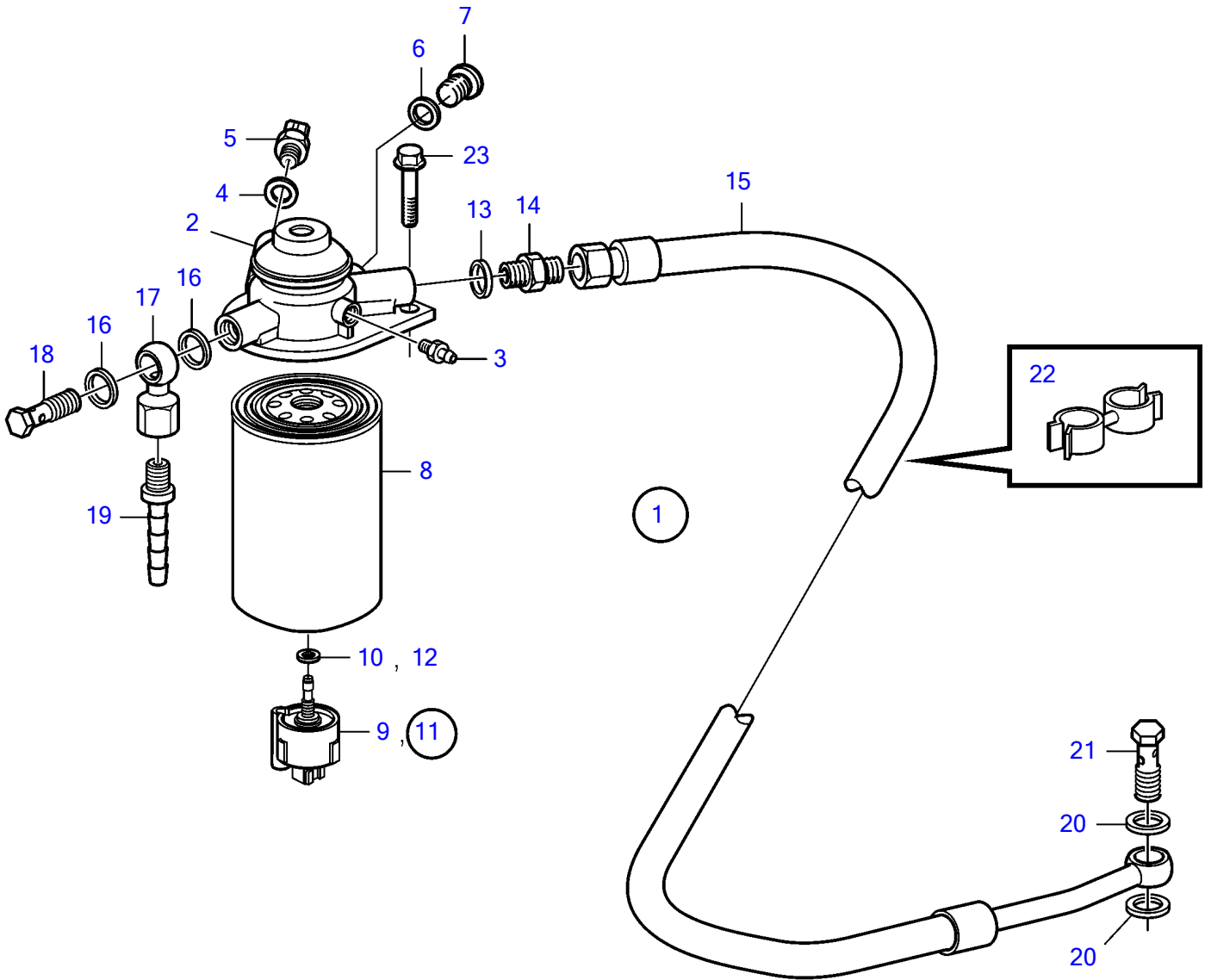


D4-180I-B, D4-180I-C, D4-180I-D, D4-180I-E, D4-210A-A, D4-210I-A, D4-210I-B, D4-225I-B, D4-225A-C, D4-225A-D, D4-225I-C, D4-225I-D, D4-260A-A, D4-260A-B, D4-260A-C, D4-260A-D, D4-260D-B, D4-260D-C, D4-260D-D, D4-260I-A, D4-260I-B, D4-260I-C, D4-260I-D, D4-300A-A, D4-300A-C, D4-300A-D, D4-300D-A, D4-300D-C, D4-300I-A, D4-300I-C, D4-300I-D, D4-225A-E, D4-225I-E, D4-260A-E, D4-260D-E, D4-260I-E, D4-300A-E, D4-300D-E, D4-300D-D, D4-300I-E



26887

D4-180I-B, D4-180I-C, D4-180I-D, D4-180I-E, D4-210A-A, D4-210I-A, D4-210I-B, D4-225I-B, D4-225A-C, D4-225A-D, D4-225I-C, D4-225I-D, D4-260A-A, D4-260A-B, D4-260A-C, D4-260A-D, D4-260D-B, D4-260D-C, D4-260D-D, D4-260I-A, D4-260I-B, D4-260I-C, D4-260I-D, D4-300A-A, D4-300A-C, D4-300A-D, D4-300D-A, D4-300D-C, D4-300I-A, D4-300I-C, D4-300I-D, D4-225A-E, D4-225I-E, D4-260A-E, D4-260D-E, D4-260I-E, D4-300A-E, D4-300D-E, D4-300D-D, D4-300I-E

| REF | PART NO. | QTY | DESCRIPTION | NOTES |
|-----|----------|-----|-----------------------|------------------------------------|
| 1 | 3588199 | 1 | Fuel filter | Replaced by 21540371 |
| | 21540371 | 1 | Fuel filter | |
| 2 | | 1 | • Fuel filter housing | |
| 3 | 20548012 | 1 | • Faucet | |
| 4 | 11996 | 1 | • Gasket | |
| 5 | 1624368 | 1 | • Sensor | |
| 6 | 969011 | 1 | • Gasket | |
| 7 | 945065 | 1 | • Plug | M14x1.5 |
| 8 | 21718912 | 1 | • Filter | |
| 9 | | 1 | • Sensor | |
| 10 | 21927730 | 1 | • • Gasket | |
| 11 | 3808616 | 1 | Sensor | Installation instruction included. |
| 12 | 21927730 | 1 | • Gasket | |
| 13 | 969011 | 1 | Gasket | |
| 14 | 941754 | 1 | Nipple | |
| 15 | 3582998 | 1 | Fuel hose | |
| 16 | 969011 | 2 | Gasket | |
| 17 | 861101 | 1 | Banjo nipple | |
| 18 | 25167 | 1 | Hollow screw | |
| 19 | 3825000 | 1 | Hose nipple | |
| 20 | 969011 | 2 | Gasket | |
| 21 | 25167 | 1 | Hollow screw | |
| 22 | 9205207 | 1 | Retainer | |
| 23 | 946671 | 2 | Flange screw | |