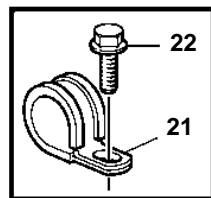
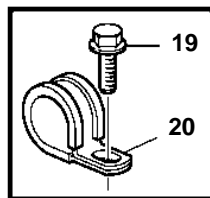
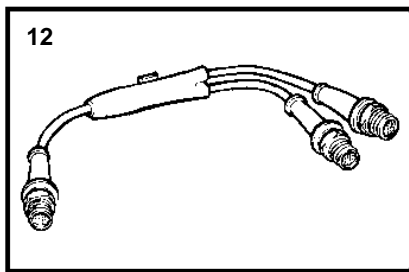
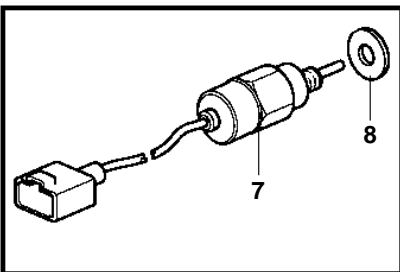
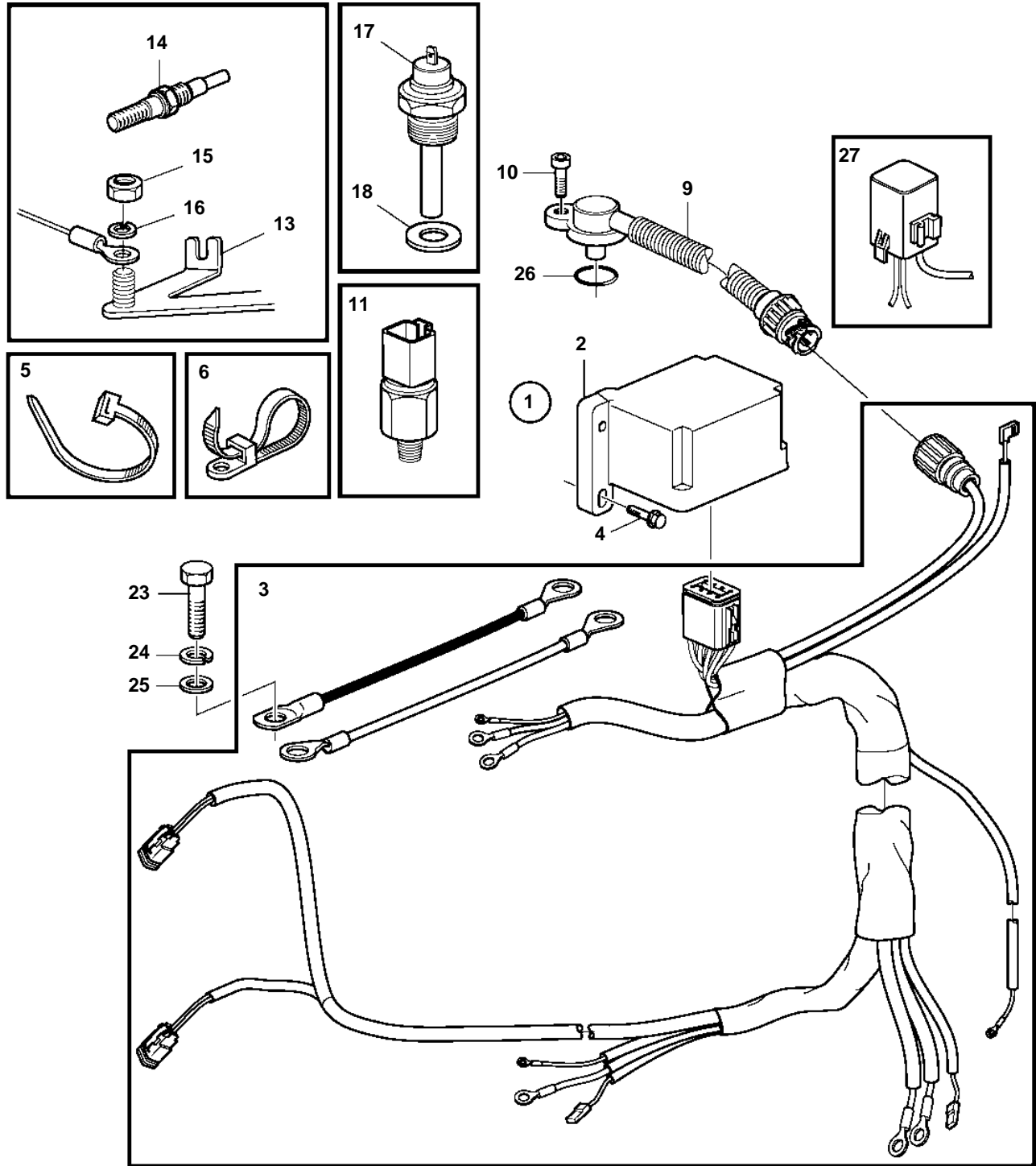


D2-75B, D2-75C, D2-75F



24018

D2-75B, D2-75C, D2-75F

REF	PART NO.	QTY	DESCRIPTION	NOTES
1			Electrical distribut	
2	21120710	1	• Control unit	Replaced by 21261871
	21261871	1	• Control unit	MDI
3	3843674	1	• Wiring harness	D2-55D, D2-55E, D2-75B, D2-75C
	21273764	1	• Wiring harness	D2-55F, D2-75F
4	948356	2	Flange screw	
5	948211	8	Cable tie	
6	948616	1	Cable tie	
7	3584127	1	Stop solenoid	
8	3580092	1	Sealing ring	
9	3944124	1	Sensor	
10	942001	1	Hex. socket screw	
11	21250645	1	Pressure switch	For oil
12	1140598	1	Distributing contact	For double steering positions.
13	3583571	1	Current bar	
14	3583025	1	Glow plug	
15	955779	1	Hexagon nut	
16	3809677	1	Washer	
17	827151	1	Temperature sensor	
18	11998	1	Gasket	
19	947191	1	Clamp	
20	947107	1	Flange screw	
21	945081	1	Clamp	
22	947107	1	Flange screw	
23	946502	1	Flange screw	ground (hull)
24	955898	1	Washer	0.2mm
25	940280	1	Spring washer	1.2mm
26	974673	1	O-ring	
27	3594745	1	Wiring harness	