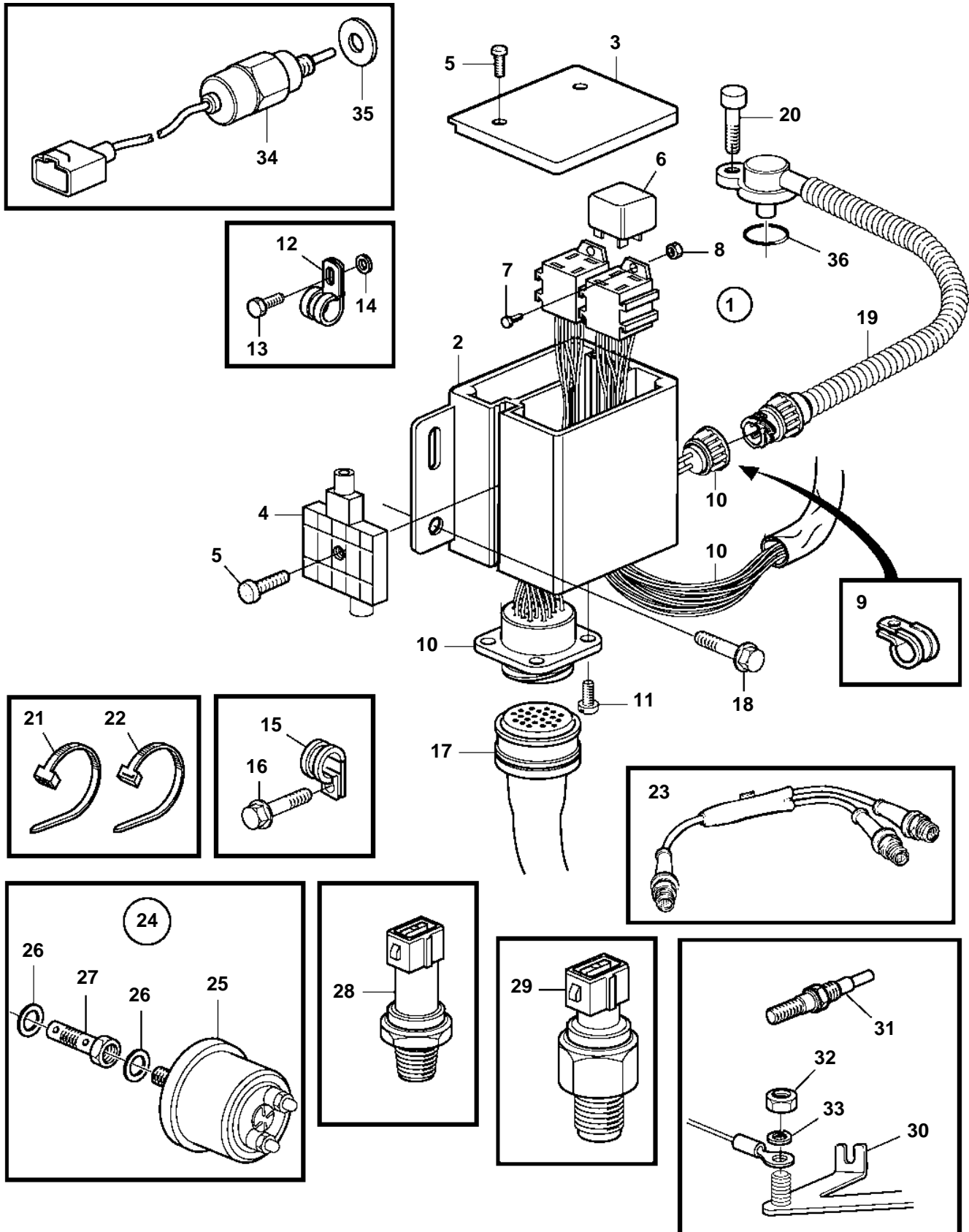


D2-75A



## D2-75A

REF	PART NO.	QTY	DESCRIPTION	NOTES
1		1	Electrical system	
2	861648	1	• Electrical distribut	
3	861681	1	• Cardboard tube	
4	873566	1	• Fuse box	
5	955142	1	• Cross recessed screw	
6	873765	2	• Relay	
7	948663	3	• Flange screw	
8	955780	3	• Hexagon nut	
9	952627	1	• Clamp	
10	881664	1	• Wiring harness	
11	955119	4	• Cross recessed screw	
12	952627	1	• Clamp	
13	969456	1	• 6 point socket screw	
14	960137	1	• Washer	
15	947191	1	Clamp	For cabel to glow plug
16	947107	1	Flange screw	
17	846648	1	Extension cable\verl	L=3000mm
	846649	1	Extension cable\verl	L=5000mm
	846650	1	Extension cable\verl	L=7000mm
	873838	1	Extension cable\verl	L=9000mm
	873839	1	Extension cable\verl	L=11000mm
18	3580269	2	Screw	
19	3944124	1	Sensor	
20	963684	1	Hex. socket screw	
21	948616	1	Cable tie	
22	948211	1	Cable tie	
23	1140598	1	Distributing contact	For double steering positions.
24		1	Sensor kit	
25	3587359	1	• Oil pressure sensor	
26	11992	2	• Gasket	
27	3583575	1	• Hollow screw	
28	3808797	1	Thermo monitor	
29	3583569	1	Temperature sensor	
30	3583571	1	Current bar	
31	3583025	4	Glow plug	
32		1	Nut	
33		1	Washer	
34	3584127	1	Stop solenoid	
35	3580092	1	Sealing ring	
36	974673	1	O-ring	