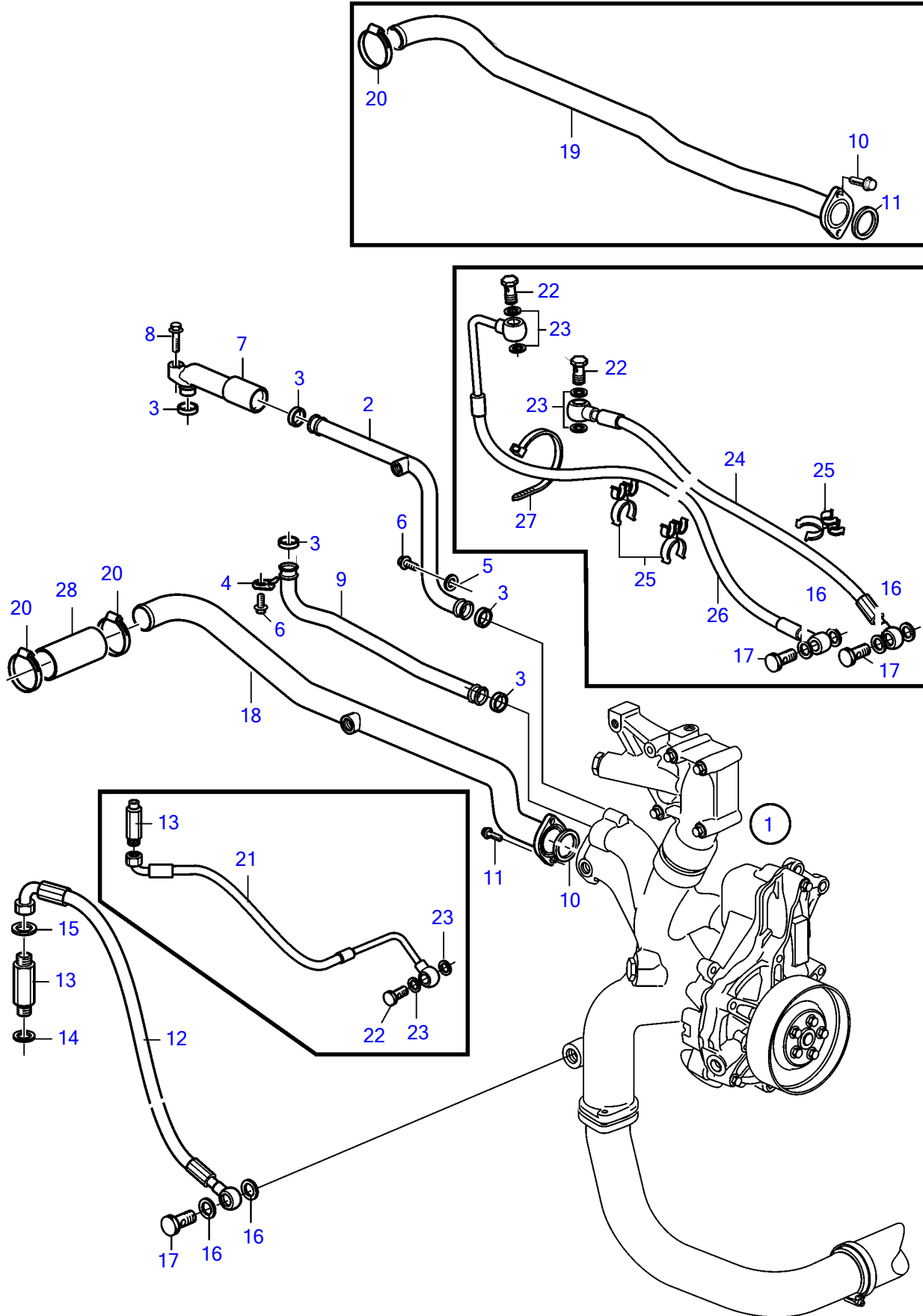


D13B-A MP, D13B-C MP, D13B-G MP, D13B-H MP



D13B-A MP, D13B-C MP, D13B-G MP, D13B-H MP

REF	PART NO.	QTY	DESCRIPTION	SEE SEC.
1		1	Water pump	
			•	
			•	36205
2		1	Water pipe	
3	1547255	5	Sealing ring	
4	20844430	1	Lock brace	
5	945583	1	Washer	
6	946440	2	Flange screw	
7	21216491	1	Pipe connection	
8	946671	1	Flange screw	
9	3594880	1	Water pipe	
10	848163	1	Gasket	
11	946934	2	Flange screw	
12	21322926	1	Cooling hose	
13	21392863	2	Adapter	
14	968559		• O-ring	
15	976931	1	Gasket	
16	20852765	4	Sealing ring	
17	941686	3	Hollow screw	
18	3594877	1	Water pipe	
19	3594880	1	Water pipe	
20	961670	2	Hose clamp	
21	21321088	1	Cooling hose	
22	190714	3	Hollow screw	
23	976931	4	Gasket	
24	21085355	1	Cooling hose	
25	3923707	3	Retainer	
26	21085358	1	Cooling hose	
27	948211	1	Cable tie	
28	3808196	1	Hose	

7749490-26-36207

25342

Upd:2012-02-08

D13B-A MP, D13B-B MP, D13B-C MP, D13B-D MP, D13B-G MP, D13B-H MP