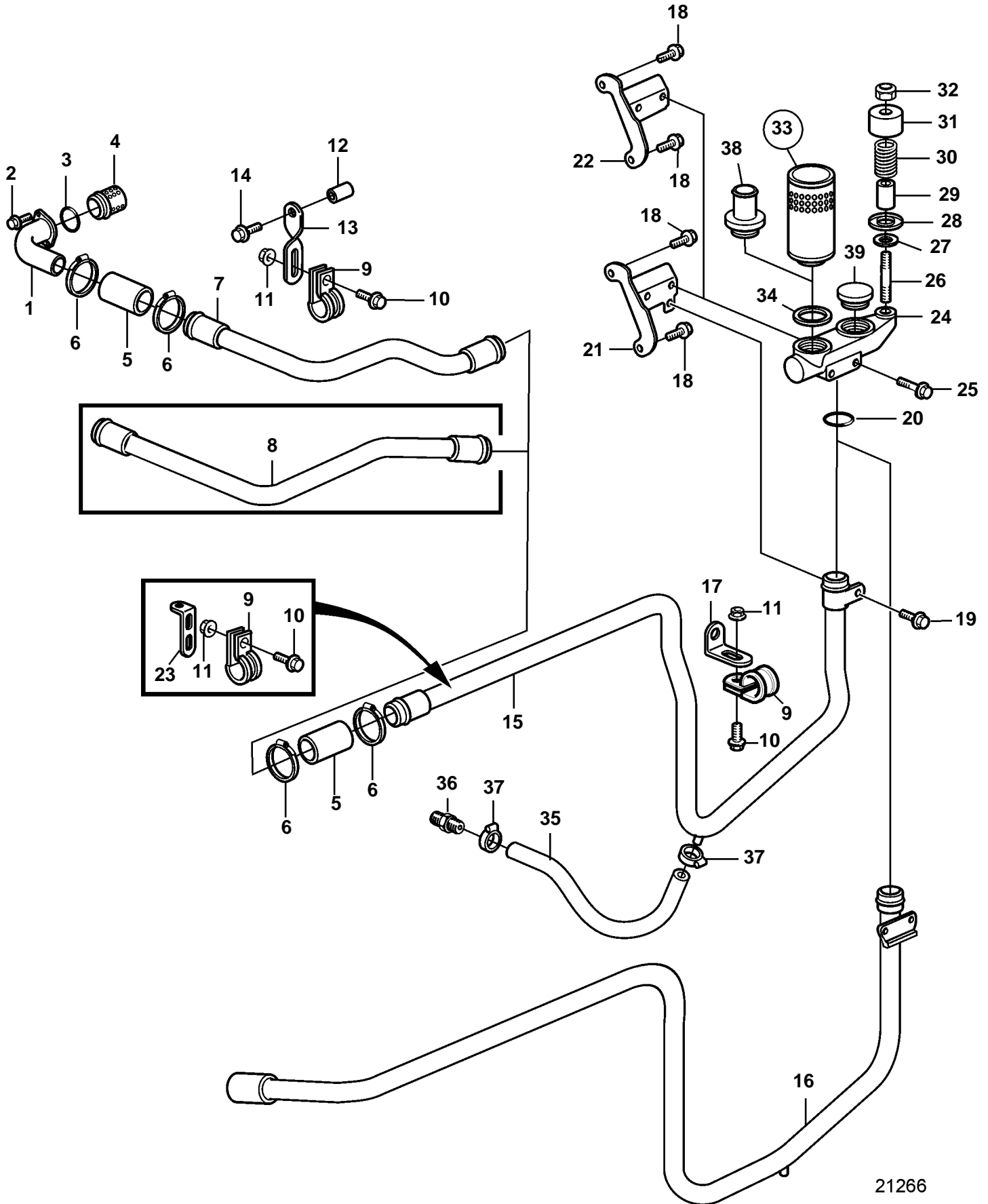


D12C-A MP, D12D-A MP, D12D-B MP



21266

## D12C-A MP, D12D-A MP, D12D-B MP

REF	PART NO.	QTY	DESCRIPTION	NOTES
1	3827462	1	Hose connection	
2	945444	2	Flange screw	
3	3165097	1	Sealing ring	
4	3165095	1	Strainer	
5	942707	X	Hose	L=100mm
6	961669	4	Hose clamp	
7	3828812	1	Tube	EARLIER PROD
8	3835437	1	Tube	LATE TYPE
9	947827	4	Clamp	
10	946440	4	Flange screw	
11	945408	4	Flange nut	
12	821540	1	Spacer sleeve	
13	1136551	1	Anchorage	
14	947760	1	Flange screw	
15	3828813	1	Tube	EARLY TYPE
16	3838148	1	Tube	LATE TYPE
17	965556	1	Bracket	
18	965185	2	Flange screw	
19	946440	1	Flange screw	EARLY TYPE
20	421158	1	Sealing ring	
21	3828858	1	Bracket	EARLY TYPE
22		1	Bracket	LATE TYPE
23	965553	1	Bracket	
24	3826199	1	Connector housing	
25	965180	2	Flange screw	
26	924058	1	Stud	
27	421158	1	Sealing ring	
28	842972	1	Valve disc	
29	842974	1	Spacer sleeve	
30	843301	1	Spring	
31	842975	1	Protecting casing	
32	963105	1	Lock nut	
33	876069	2	Filter	
34	843449	2	Gasket	
35	3524376	X	Hose	L=250mm
36	942722	1	Nipple	
37	961663	2	Hose clamp	
38	845260	1	Hose attachment	
39	3836106	1	Plug	Used when hose connection 845260 is mounted.