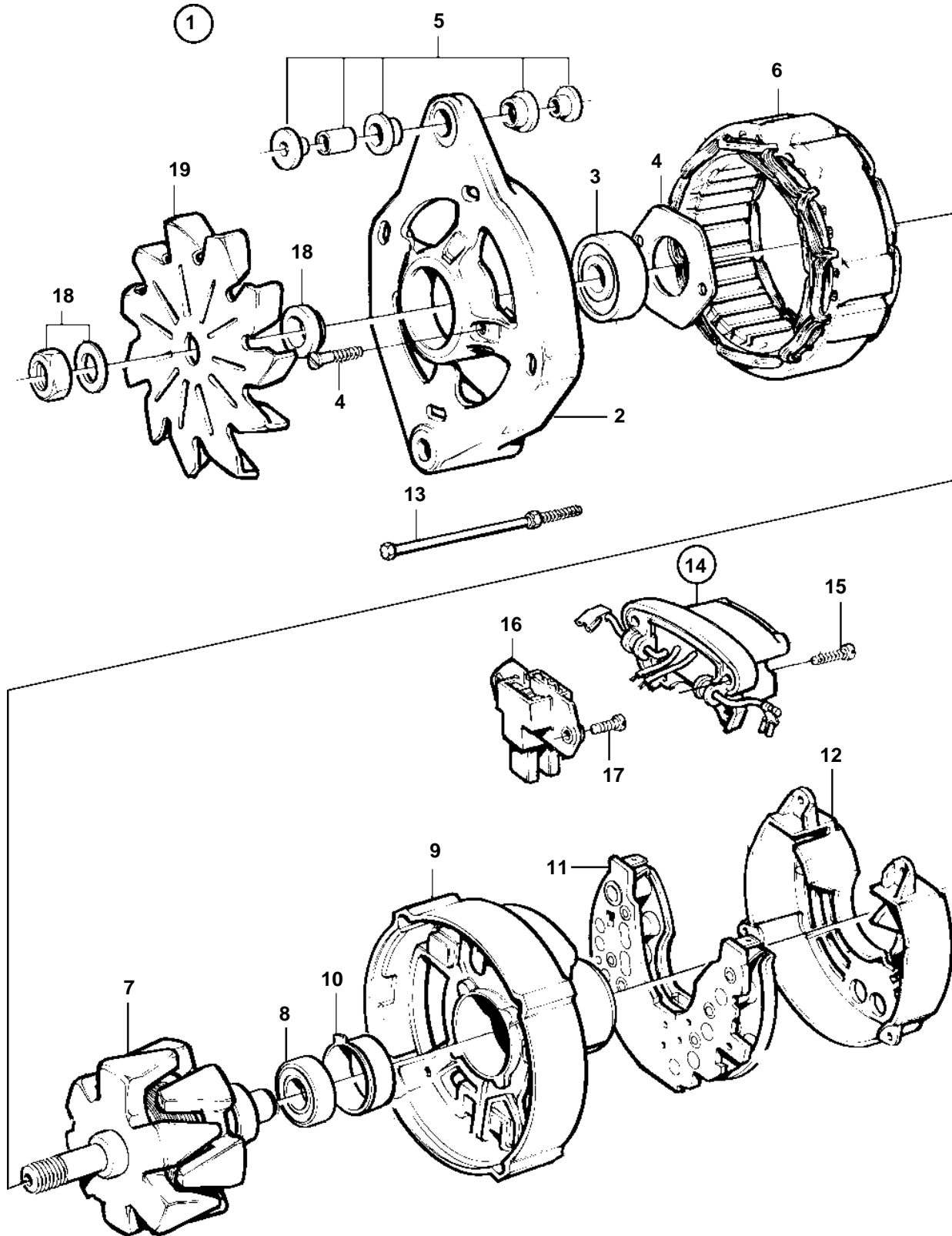


D12D-A MH, D12D-B MH, D12D-C MH, D12C-A MP, D12D-A MP, D12D-C MP



D12D-A MH, D12D-B MH, D12D-C MH, D12C-A MP, D12D-A MP, D12D-C MP

REF	PART NO.	QTY	DESCRIPTION
1	873986	1	Alternator
	3803496	1	Alternator, exch, exch
2		1	· End plate
3	847708	1	· Ball bearing
4	847709	1	· Bearing carrier
5	840634	1	· Guide
6		1	· Stator
7		1	· Rotor
8	864351	1	· Ball bearing
9		1	· End plate
10		1	· Bearing race
11	3090710	1	· Diode bridge
12	847712	1	· Protecting casing
13	847710	1	· Screw kit
14	872368	1	· Regulator kit
15	859312	4	· · Screw
16	840632	1	· · Brush retainer
17	859312	2	· · · Screw
18	847706	1	· Nut set
19		1	· Fan