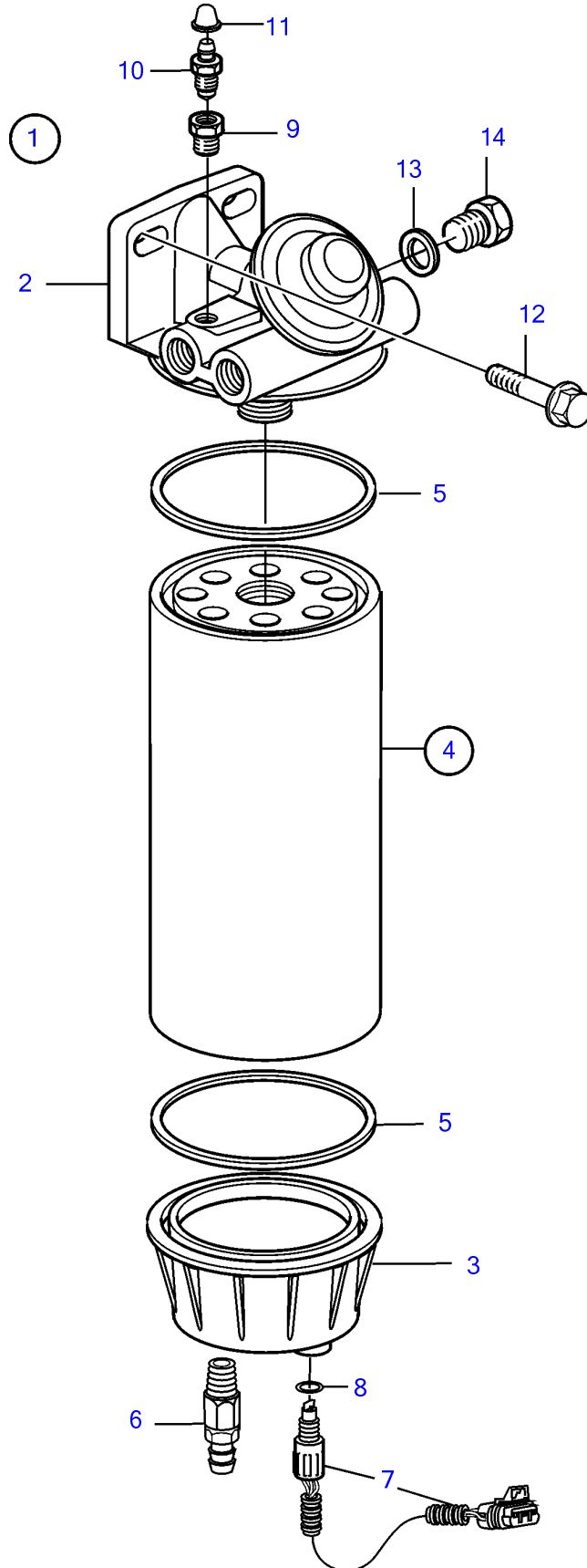


D12D-A MG, D12D-E MG



D12D-A MG, D12D-E MG

| REF | PART NO. | QTY | DESCRIPTION | NOTES |
|-----|----------|-----|-----------------------|-----------|
| 1 | 3885572 | 1 | Fuel filter | |
| 2 | | 1 | • Filter housing | |
| 3 | | 1 | • Bowl | |
| 4 | 3817517 | 1 | • Fuel filter kit | (3839469) |
| 5 | | 2 | • • Gasket | |
| 6 | 949918 | 1 | • Shut-off cock | |
| 7 | 3885070 | 1 | • Sensor, water level | |
| 8 | 3831094 | 1 | • • O-ring | |
| 9 | | 1 | • Nipple | |
| 10 | 20548012 | 1 | • Faucet | (1330191) |
| 11 | 20547976 | 1 | • Protecting cover | (656456) |
| 12 | 946472 | 2 | Flange screw | |
| 13 | 11996 | 1 | Gasket | |
| 14 | 960631 | 1 | Plug | |