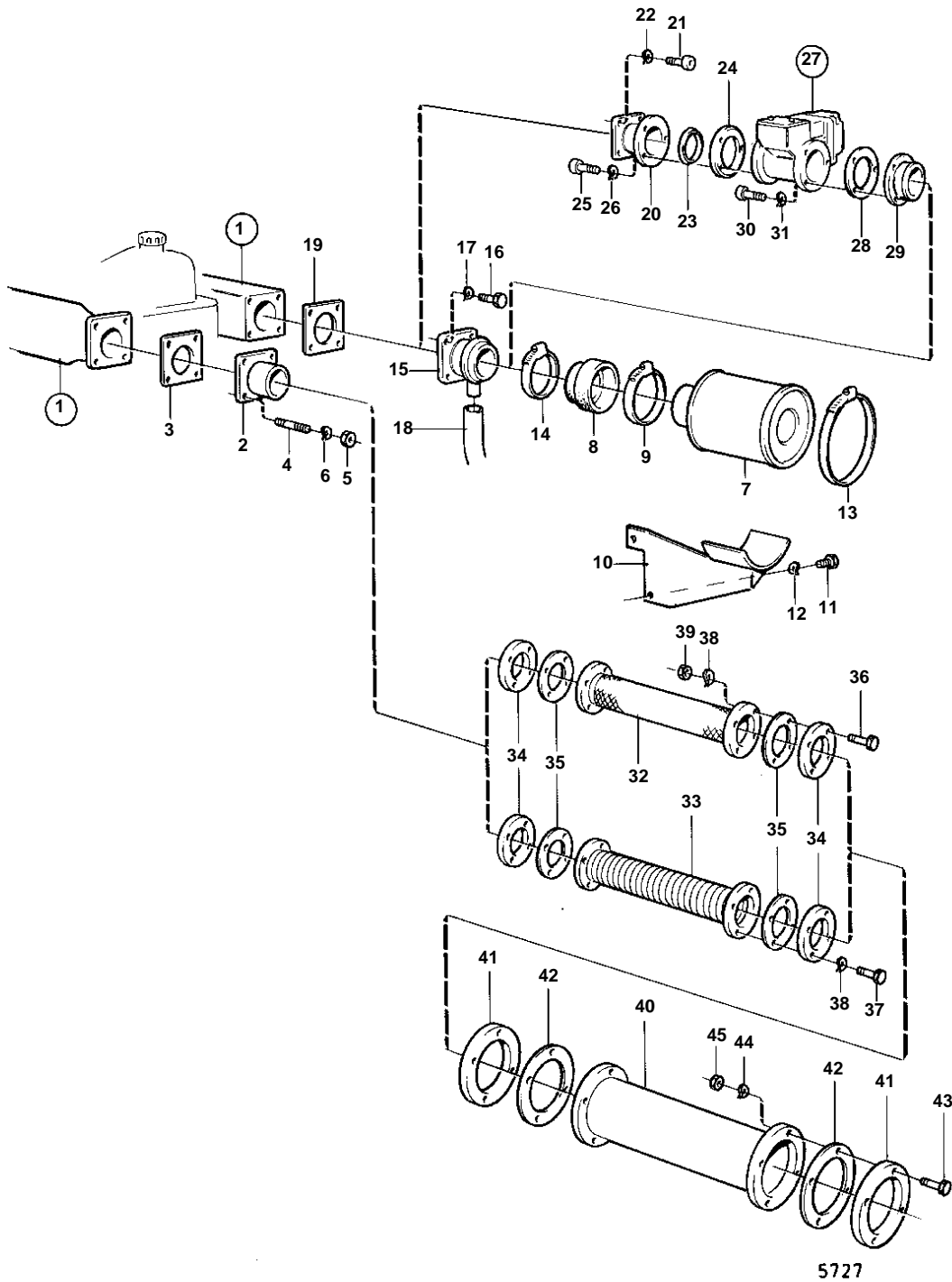


D100BHC,D100BRC



D100BHC,D100BRC

REF	PART NO.	QTY	DESCRIPTION	SEE SEC.	NOTES
1			INDUCTION AND EXHAUST MANIFOLD WITH INSTALLATION COMPONENTS	02B-1800	
2	820786	1	Exhaust pipe flange		
3	820785	1	Gasket	IK	
4	953261	4	Stud		
5	943152	4	Nut		
6	940097	4	Washer		
7	842280	1	Air filter		
8	843409	1	Fitting		
9	943484	1	Hose clamp		
10	843415	1	Bracket		
	843737	1	Bracket		ÅKERMAN.
11	955560	2	Screw		
12	940280	2	Spring washer		
13	942921	1	Hose clamp		
14	943483	1	Hose clamp		
15	843414	1	Flange		
16	956570	4	Screw		
17	941907	4	Spring washer		
18	952973	X	Hose		L = 65 MM SEE GROUP 2A
19	466271	1	Gasket		
20	843716	1	Spacer flange		ÅKERMAN.
21	955525	4	Screw		ÅKERMAN.
22	941907	4	Spring washer		ÅKERMAN.
23	843703	1	Clamping ring		ÅKERMAN.
24	843704	1	Attaching ring		ÅKERMAN.
25	940142	3	Screw		ÅKERMAN.
26	941907	3	Spring washer		ÅKERMAN.
27			EMERGENCY STOP		SEE GROUP 3
28	843718	1	Gasket		ÅKERMAN.
29	843717	1	Connection flange		ÅKERMAN.
30	959221	2	Screw		L = 22 MM. ÅKERMAN.
	959231	1	Screw		L = 70 MM. ÅKERMAN.
31	941907	3	Spring washer		ÅKERMAN.
32	820900	1	Exhaust hose		L = 590 MM
33	843087		Compensator		L = 85 MM
	843088		Compensator		L = 185 MM
34	820905	2	Connection flange		
35	807578	2	Gasket	IK	
36	955593	8	Screw		
37	955365	8	Screw		
38	941912	8	Spring washer		
39	955829	8	Nut		
40	804961	1	Muffler		L = 1033 MM
	807704	1	Muffler		L = 1170 MM
41	805087	2	Exhaust pipe flange		FOR ENGINE WITHOUT VOLVO PENTA RADIATOR.
	842004	2	Flange		SPECIAL MODEL,WATER PUMP SHAFT LENGHT=153 MM.
42	807578	2	Gasket		FOR ENGINE WITHOUT VOLVO PENTA RADIATOR.. SPECIAL MODEL,WATER PUMP SHAFT LENGHT=153 MM.
43	955367	8	Screw		FOR ENGINE WITHOUT VOLVO PENTA RADIATOR.
	955591	8	Screw		SPECIAL MODEL,WATER PUMP SHAFT LENGHT=153 MM.
44	941912	8	Spring washer		FOR ENGINE WITHOUT VOLVO PENTA RADIATOR.. SPECIAL MODEL,WATER PUMP SHAFT LENGHT=153 MM.
45	955785	8	Nut		FOR ENGINE WITHOUT VOLVO PENTA RADIATOR.

D100BHC,D100BRC

REF	PART NO.	QTY	DESCRIPTION	SEE SEC.	NOTES
45	955829	8	Nut		SPECIAL MODEL,WATER PUMP SHAFT LENGHT=153 MM.