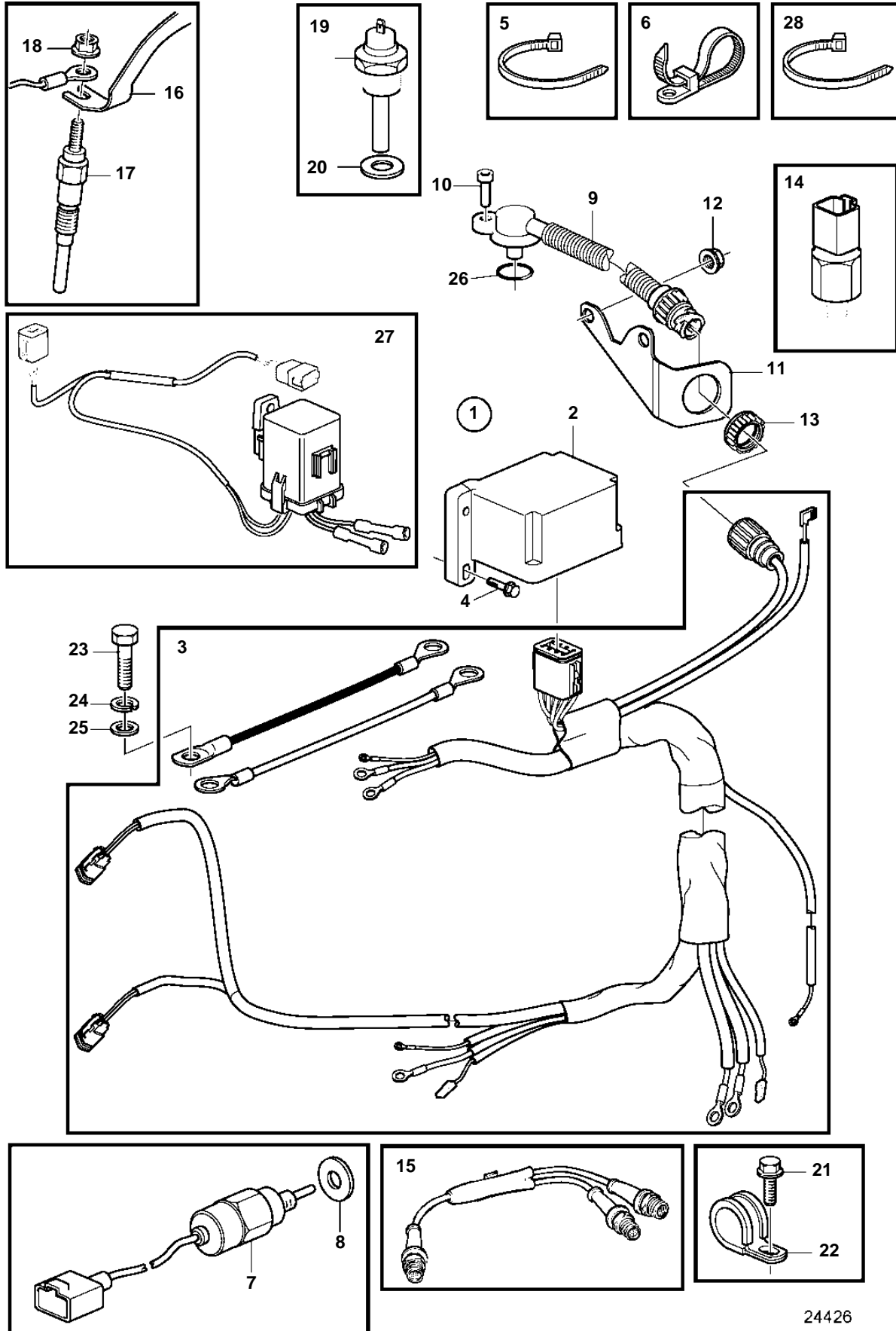


D1-13F, D1-20F, D1-30F, D2-40F



24426

D1-13F, D1-20F, D1-30F, D2-40F

REF	PART NO.	QTY	DESCRIPTION	SEE SEC.	NOTES
1			Electrical distribut		
2	21261871	1	• Control unit		
3	21273758	1	• Wiring harness		D1-13F, D1-20F
	21273760	1	• Wiring harness		D1-30F, D2-40F
4	948356	2	Flange screw		
5	948211	10	Cable tie		
6	948616	3	Cable tie		
7	3584127	1	Stop solenoid		
8	3580092	1	Sealing ring		
9	3944124	1	Sensor		
10	963684	1	Hex. socket screw		
11		1	Bracket	8329	
12		2	Screw	8329	
13	3963413	1	Ring		
14	21250645	1	Pressure switch		
15	1140598	1	Distributing contact		For double steering positions.
16	3809642	1	Current bar		D1-13
	3812103	1	Current bar		D1-20
	21192360	1	Connector		D1-30
	3886459	1	Current bar		D2-40
17	3809641	2	Glow plug		D1-13
	3809641	3	Glow plug		D1-20
	21192358	3	Glow plug		D1-30
	3809641	4	Glow plug		D2-40
18	3883704	2	Nut		D1-13
	3883704	3	Nut		D1-20, D1-30
	3883704	4	Nut		D2-40
19	827151	1	Temperature sensor		
20	11998	1	Gasket		
21	945081	1	Clamp		D2-40
22	947107	1	Flange screw		D2-40
23	21246653		Hexagon screw		ground (hull), D1-13, D1-20
	21246686	1	Hexagon screw		ground (hull), D1-30, D2-40
24	3580015	1	Spring washer		D1-13, D1-20
			Spring washer		D1-30, D2-40
25	3580108	1	Washer		D1-13, D1-20
		1	Washer		D1-30, D2-40
26	974673	1	O-ring		
27	3594745	1	Wiring harness		
28	3887369	3	Strap		