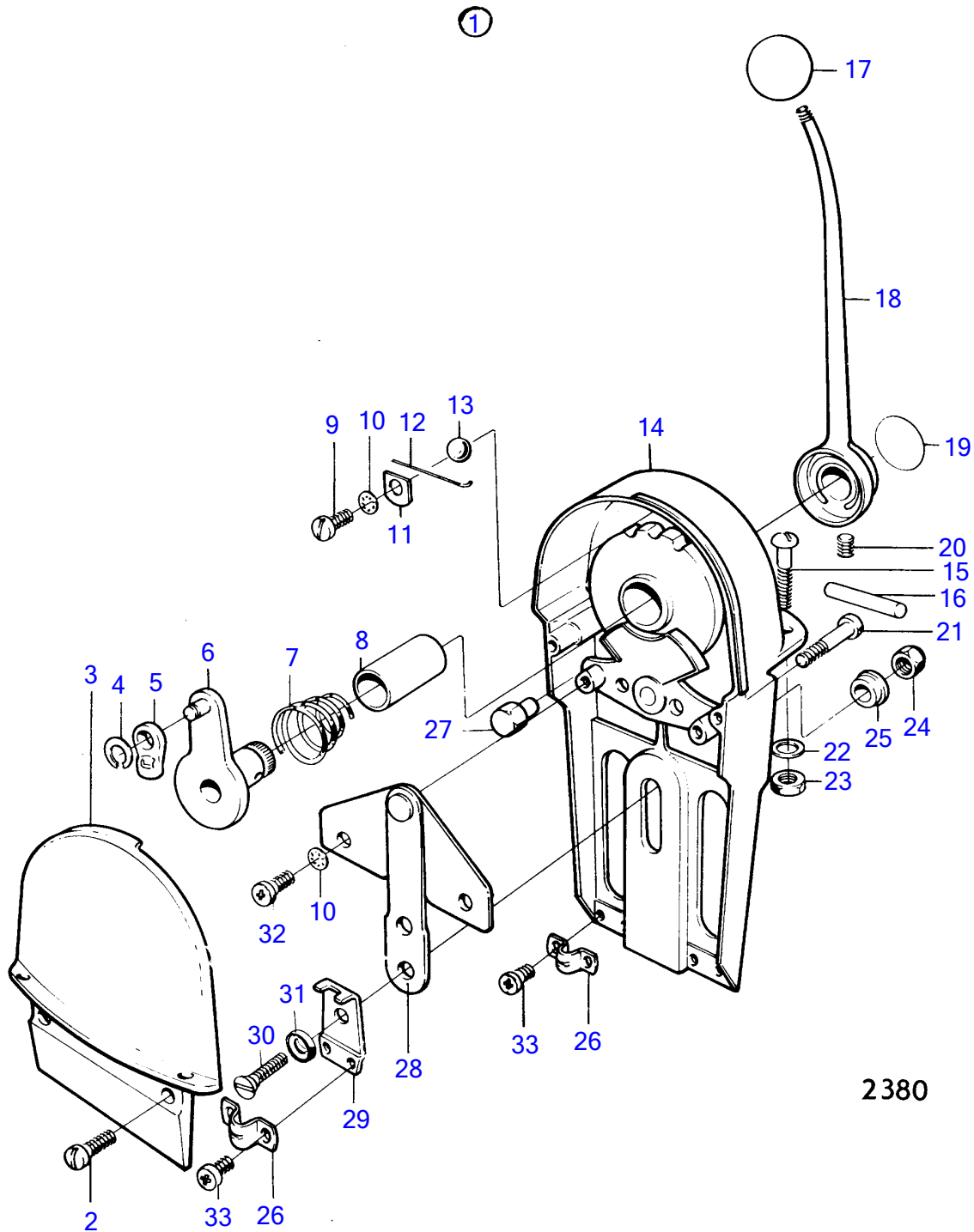


AQD70D, TAMD70D, TAMD70E



2380

AQD70D, TAMD70D, TAMD70E

REF	PART NO.	QTY	DESCRIPTION	NOTES
1	809968	1	Control	For twin engine installation., Obsolete part
4	951668	2	• E-circlip	
5	814269	2	• Cable attachment	Obsolete part
6	825877	2	• Throttle arm	Obsolete part
7	825870	2	• Spring	Obsolete part
8	825872	2	• Bearing bushing	Obsolete part
9	950019	2	• Cross recessed screw	Obsolete part
10	955946	6	• Toothed washer	Obsolete part
11		2	•	
12	825879	6	• Spring	Obsolete part
13	60309	2	• Ball	Obsolete part
14		2	• housing	
15	943091	4	• Screw	Obsolete part
16	825880	2	• Pin	Obsolete part
17	825881	2	• Handle ball	Obsolete part
18	825882	2	• Lever	Obsolete part
19		2	•	
20	825874	2	• Lock screw	Obsolete part
21	950025	2	• Cross recessed screw	Obsolete part
22	940275	4	• Washer	
23	940092	4	• Hexagon nut	
24	950372	2	• Nut	Obsolete part
25	825865	2	• Sleeve	Obsolete part
26	817726	4	• Cable fixing clamp	Obsolete part
27	825873	2	• Cable fixing clamp	Obsolete part
28		2	•	
29	820003	2	• Anchorage	Obsolete part
30		2	•	
31	827716	2	• Bushing	Obsolete part
32	950020	4	• Cross recessed screw	Obsolete part
33	950019	8	• Cross recessed screw	Obsolete part