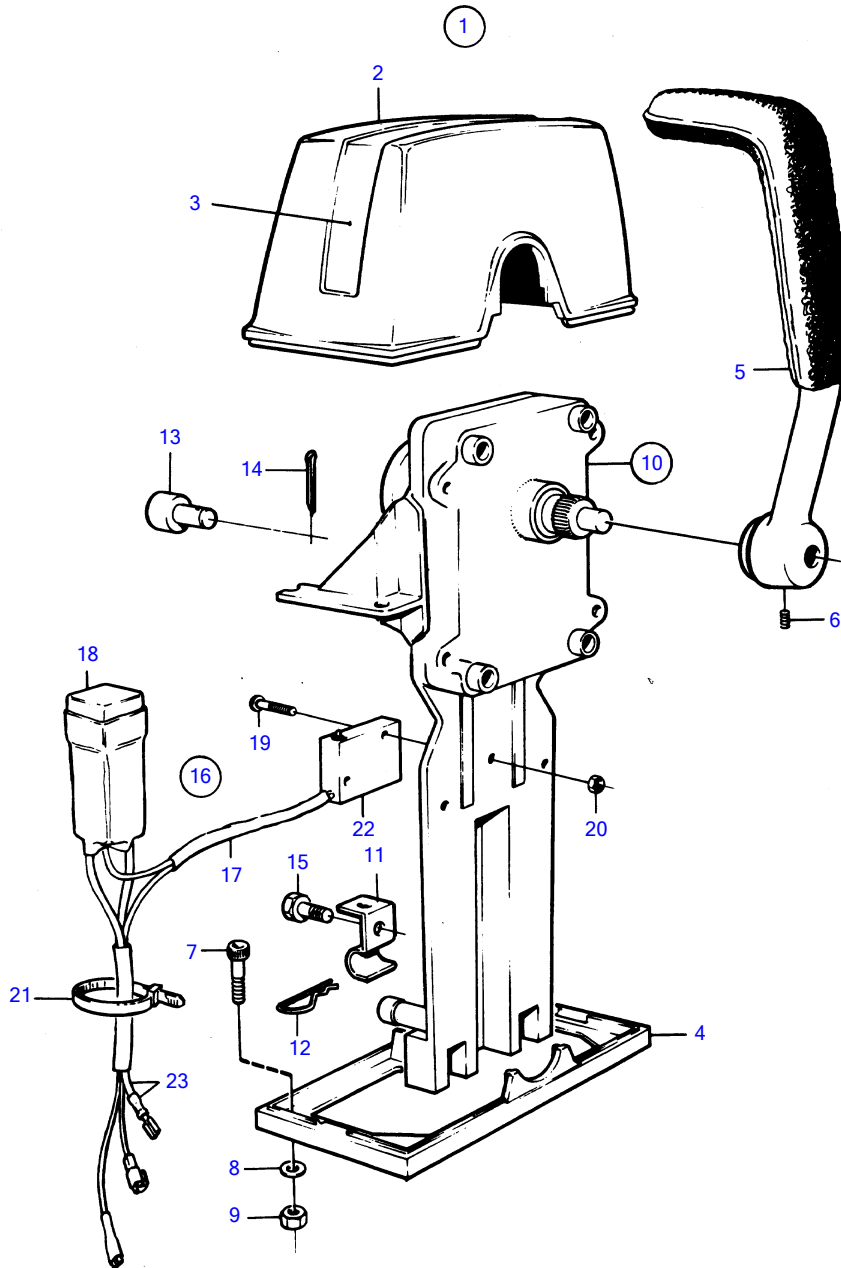


AQD70D, TAMD70D, TAMD70E



7469

AQD70D, TAMD70D, TAMD70E

| REF | PART NO. | QTY | DESCRIPTION | NOTES |
|-----|----------|-----|------------------------|---------------|
| 1 | 851602 | 1 | Mounting kit | Single |
| 2 | 839472 | 1 | • Cover | |
| 3 | | 1 | • Decal | |
| 4 | 839474 | 1 | • Plate | |
| 5 | 839475 | 1 | • Hand lever | |
| 6 | 839693 | 1 | • Lock screw | |
| 7 | 947671 | 4 | • Hex. socket screw | |
| 8 | 960138 | 4 | • Washer | |
| 9 | 955780 | 4 | • Hexagon nut | |
| 10 | 851600 | 1 | Control | |
| 11 | 853423 | 1 | • Retainer | |
| 12 | 852924 | 1 | • Clip | |
| 13 | 839638 | 1 | • Cube | |
| 14 | 17253 | 1 | • Split pin | |
| 15 | 839664 | 1 | Screw | |
| 16 | 855352 | 1 | Neutral position con | |
| 17 | (839619) | 1 | • Cable kit | Obsolete part |
| 18 | 1501832 | 1 | • Relay | |
| 19 | 946177 | 2 | • Cross recessed screw | |
| 20 | 947536 | 2 | • Hexagon nut | |
| 21 | 948210 | X | • Cable tie | |
| 22 | 850200 | 1 | • Toggle switch | |
| 23 | | X | cables and terminals | See group 3 |