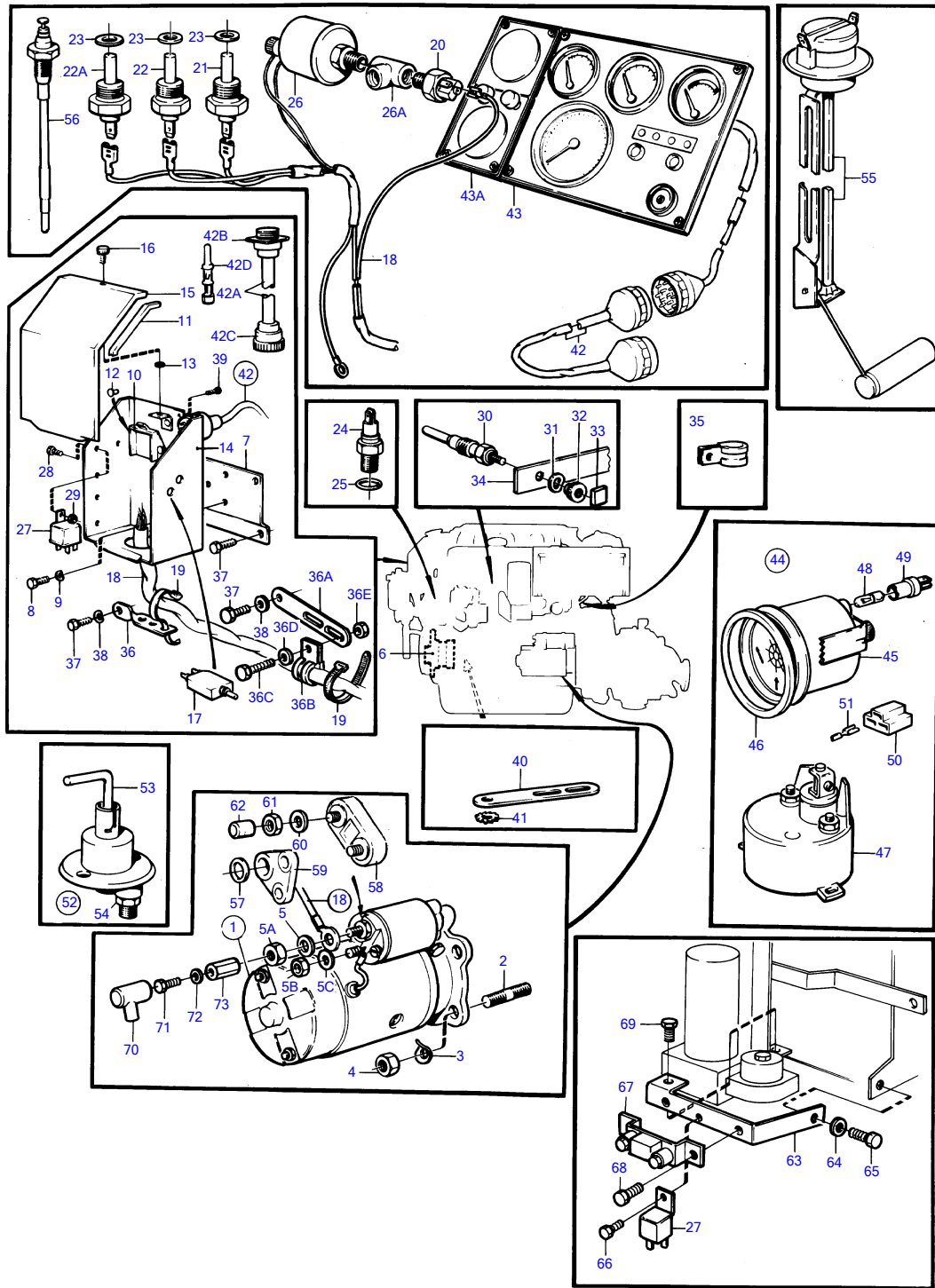


AQAD30A, MD30A, TAMD30A, TMD30A



7594

AQAD30A, MD30A, TAMD30A, TMD30A

REF	PART NO.	QTY	DESCRIPTION	SEE SEC.	NOTES
1	829527	1	Starter motor	18172	12V
	838987	1	Starter motor	18173	24V
2	953067	3	Stud		
3	941908	3	Spring washer		
4	955783	3	Hexagon nut		
5	955949	1	Toothed washer		OBSOLETE PART
5A	955782	1	Hexagon nut		
5B	955780	1	Hexagon nut		
5C	941905	1	Spring washer		
6		X	ALTERNATOR AND INSTALLATION COMPONENTS	18170	
7	838539	1	Bracket		(846763), OBSOLETE PART
8	955268	3	Hexagon screw		
9	955892	3	Washer		
10	1234048	1	Bottom section		
11	1214306	1	Stop dog		OBSOLETE PART
12	942670	2	Blind rivet		
13	925051	1	O-ring		
14	846791	1	Box		
15	846662	1	Cardboard tube		OBSOLETE PART
16	846736	1	Lock screw		
17	966689	1	Fuse		
18	846060	1	Cable trunk		
	858057	1	Cable trunk		SPEC.867947,867983., OBSOLETE PART
19	948210	X	Cable tie		
20	881348	1	Pressure switch		
21	833927	1	Thermo monitor		
	822858	1	Thermo monitor		SPEC.867947,867983.
	858595	1	Temperature sensor		FOR DUAL STATION., COMBINED TEMPERATURE SENSOR AND GUARD., OBSOLETE PART
	858596	1	Temperature sensor		MO4960- FOR DUAL STATION., COMBINED TEMPERATURE SENSOR AND GUARD., 24V MO4960-
22	827151	1	Temperature sensor		
	843325	1	Temperature sensor		SPEC.867947,867983.
22A	840345	1	Temperature sensor		ALTERNATIVE FOR TEMP.SENDER 827151 AND THERMOSWITCH CONTROL 833927.
23	957181	1	Gasket		
24	1502028	1	Tachometer sensor		
25	925059	1	O-ring		
26	843231	1	Oil pressure sensor		
26A	942490	1	T-nipple		SPEC.867947,867983.
27	846762	2	Relay		
	838955	3	Relay		SPEC.867947,867983.
28	955268	2	Hexagon screw		
29	955781	2	Hexagon nut		
30	1542411	4	Glow plug		
	838954	4	Glow plug		SPEC.867947,867983.
31	941905	4	Spring washer		
32	955780	4	Hexagon nut		
33	1542408	4	Protecting casing		
34	1544108	1	Glow rail		OBSOLETE PART
35	946834	1	Clamp		
36	354842	1	Bracket		EARLY TYPE
36A	965534	1	Bracket		LATE TYPE
36B	947827	1	Clamp		LATE TYPE
36C	955271	1	Hexagon screw		LATE TYPE
36D	941907	1	Spring washer		LATE TYPE

7744050-30-18176

7594

Upd:2010-07-01

AQAD30A, MD30A, TAMD30A, TMD30A

REF	PART NO.	QTY	DESCRIPTION	SEE SEC.	NOTES
36E	955781	1	Hexagon nut		LATE TYPE
37	955268	2	Hexagon screw		
38	941907	1	Spring washer		(955894)
39	955119	4	Cross recessed screw		
40	965534	1	Bracket		
41	955949	1	Toothed washer		OBSOLETE PART
42	846648	X	Extension cable\verl		L = 3000 MM
	846649	X	Extension cable\verl		L = 5000 MM
	846650	X	Extension cable\verl		L = 7000 MM
42A	846639	X	• Electric cable		
42B	846647	1	• Block		
42C	846612	1	• Housing		
42D		16	PIN	18174	
43	838926	1	Instrument panel		SEE GROUP 9
	858036	1	Instrument panel		SPEC.867947,867983., SEE GROUP 9, OBSOLETE PART
43A		1	INSTRUMENT PANEL		SEE GROUP 9
44	840789	1	Rudder indicator kit		12V REPL BY 858884
45	828698	1	• Rudder indicator		
46	828542	1	• Front ring		
47	837772	1	• Position sensor		
48	19923	1	• Bulb		
49	808175	1	• Lamp socket		
50	945469	1	• Housing		
51	881485	3	• Cable terminal		
52	870980	1	Main switch		
53	243700	1	• Handle		
54	955783	2	• Hexagon nut		
55	834400	1	Tank gauge		FOR DRINKING WATER., SEE GROUP 9, OBSOLETE PART
	828716	1	Water level gauge		FOR DRINKING WATER., SEE GROUP 9
		1			FOR DRINKING WATER., SEE GROUP 9
	834399	1	Tank gauge		FOR FUEL., SEE GROUP 9, OBSOLETE PART
	828714	1	Fuel gauge kit		FOR FUEL., SEE GROUP 9
		1			FOR FUEL., SEE GROUP 9
56			COOLING WATER LEVEL ALARM		SEE GROUP 9
57	829714	1	Sealing ring		AQAD30A
58	853502	1	Fuse		AQAD30A
59	852986	1	Current bar		AQAD30A
60	941906	2	Spring washer		AQAD30A
61	955781	1	Hexagon nut		AQAD30A
	853573	1	Nut		AQAD30A
62	853572	1	Protective cap		AQAD30A
63	858078	1	Bracket		SPEC.867947,867983., OBSOLETE PART
64	941908	1	Spring washer		SPEC.867947,867983.
65	955317	1	Hexagon screw		SPEC.867947,867983.
66	955268	1	Hexagon screw		SPEC.867947,867983.
67	838953	1	Series resistance		SPEC.867947,867983., OBSOLETE PART
68	955268	2	Hexagon screw		SPEC.867947,867983.
69	955296	1	Hexagon screw		SPEC.867947,867983.
70	855798	1	Protecting sleeve		
71	940199	1	Hexagon screw		
72	941907	1	Spring washer		
73	855314	1	Nut		