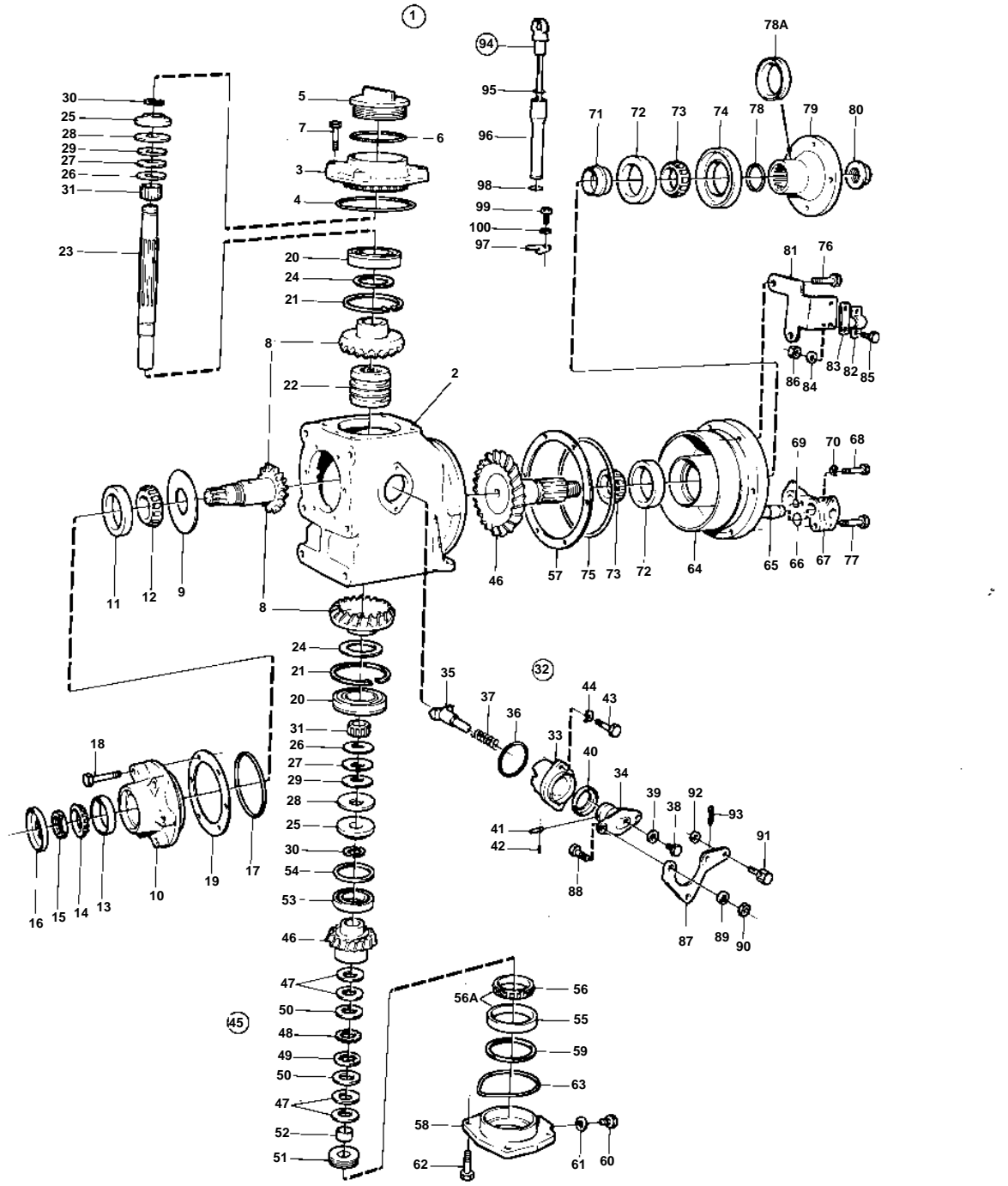


COMMON



8960

COMMON

REF	PART NO.	QTY	DESCRIPTION	SEE SEC.	NOTES
1	853798	1	Reversing gear		RATIO 2,3:1 REPL BY 872831
2	852726	1	• Housing		(853849)
3	852524	1	• Cover		
4	949962	1	• O-ring	IK	
5	851754	1	• Oil filler cap		
6	1664473	1	• O-ring	IK	(925254)
7	946671	4	• Flange screw		
8	851616	1	• Gear set		
9	851621	1	• Guide disc		
10	851619	1	• Bearing box		REPL BY 872710. BEARING UNIT 851619 SHOULD NOT BE USED TOGETHER WITH VIBRATION DAMPER 872809.SEE GROUP 2A.
11	181302	1	• Cup		
12	181301	1	• Cone		
13	183750	1	• Cup		
14	183752	1	• Cone		
15	852485	1	• Lock nut		
16	851755	1	• Sealing ring	IK	
17	925093	1	• O-ring	IK	
18	940101	6	• Screw		
19	851622	X	• Adjusting washer		TH = 0,10 MM
	851623	X	• Adjusting washer		TH = 0,15 MM
	851624	X	• Adjusting washer		TH = 0,35 MM
20	851756	2	• Bearing		
21	852190	2	• Lock ring		
22	851626	1	• Sliding sleeve		
23	852527	1	• Shaft		
24	941835	X	• Adjusting washer		TH = 0,05 MM
	852184	X	• Shim		TH = 0,05 MM
	84219	X	• Adjusting washer		TH = 0,10 MM
	949776	X	• Adjusting washer		TH = 0,15 MM
	84218	X	• Spacer		TH = 0,35 MM
25	852079	2	• Lock washer		
26	852311	2	• Washer		
27	852317	2	• Washer		
28	852213	2	• Disc spring		
29	852080	6	• Disc spring		
30	851629	4	• Lock ring half		
31	851757	2	• Needle bearing		
32	851661	1	• Shift mechanism		
33	851662	1	• • Bearing housing		
34	897816	1	• • Eccentric piston		
			• • Bulletin P-44-1-7	P-44-1-7-EN	Shift mechanism, eccentric piston
35	851664	1	• • Dog		
36	925065	1	• • O-ring	IK	
37	814184	1	• • Spring		
38	897711	1	• • Screw		
39	897871	X	• • Adjusting washer		TH = 0,20 MM
40	958838	1	• • Sealing ring	IK	
41	942871	1	• • Pin		
42	951924	1	• • Tensioning din		
43	955296	2	• Screw		
44	941907	2	• Spring washer		
45	854284	1	• Gear set		
46	853804	2	• • Gear set		REPL BY 854284
47		4	• • CUP SPRING		
48		18	• • OUTER DISC		
49		17	• • INNER DISC		
50		2	• • THRUST WASHER		
51		1	• • ADJUSTING SCREW		

COMMON

REF	PART NO.	QTY	DESCRIPTION	SEE SEC.	NOTES
52		1	• • BUSHING		
53	183518	1	• Bearing		
54	851705	X	• Adjusting washer		TH = 0,10 MM
	851706	X	• Adjusting washer		TH = 0,15 MM
	851707	X	• Adjusting washer		TH = 0,35 MM
55	181662	1	• Cup		REPL BY 183842
56	181305	1	• Cone		REPL BY 183842
56A	183842	1	• Roller bearing		COMPL.BEARING
57	851702	X	• Adjusting washer		TH = 0,10 MM
	851703	X	• Adjusting washer		TH = 0,15 MM
	851704	X	• Adjusting washer		TH = 0,35 MM
58	853848	1	• Bearing cover		
59	87655	X	• Adjusting washer		TH = 0,10 MM
	191840	X	• Adjusting washer		TH = 0,15 MM
	87654	X	• Spacer		TH = 0,35 MM
60	960629	1	• Plug		
61	947084	1	• Gasket	IK	
62	946671	4	• Flange screw		
63	925256	1	• O-ring	IK	
64	853824	1	• Bearing housing		
65	853940	1	• Oil cooler		
66	943309	2	• O-ring	IK	
67	852733	1	• Pipe connection		
68	955279	1	• Screw		L = 55 MM
69	949750	1	• O-ring	IK	
70	941906	1	• Spring washer		
71	851974	1	• Collet		
72	181302	2	• Cup		
73	181301	2	• Cone		
74	852528	1	• Sealing ring	IK	
75	925262	1	• O-ring	IK	
76	946470	2	• Flange screw		L = 35 MM
	947760	2	• Flange screw		L = 40 MM
77	965180	2	• Flange screw		L = 60 MM
78	925062	1	• O-ring	IK	
78A	944138	1	• Sealing ring	IK	
79	852076	1	• Companion flange		
80	947855	1	• Lock nut		
81	852168	1	• Bracket		
82	819067	1	• Brace		
83	819068	1	• Washer		
84	940090	2	• Washer		
85	955246	2	• Screw		
86	946577	2	• Lock nut		
87	852363	1	• Lever		
88	955270	2	• Screw		
89	955948	2	• Lock washer		
90	955781	2	• Nut		
91	833462	1	• Cube		
92	955892	1	• Washer		
93	17276	1	• Cotter pin		
94	852915	1	• Oil dipstick		
95	925054	1	• • O-ring		
96	852916	1	• Tube		
97	852229	1	• Cap		
98	925055	1	• O-ring		
99	956063	1	• Screw		
100	955891	1	• Washer		
	875704		• Gasket kit		SEE GROUP 10A