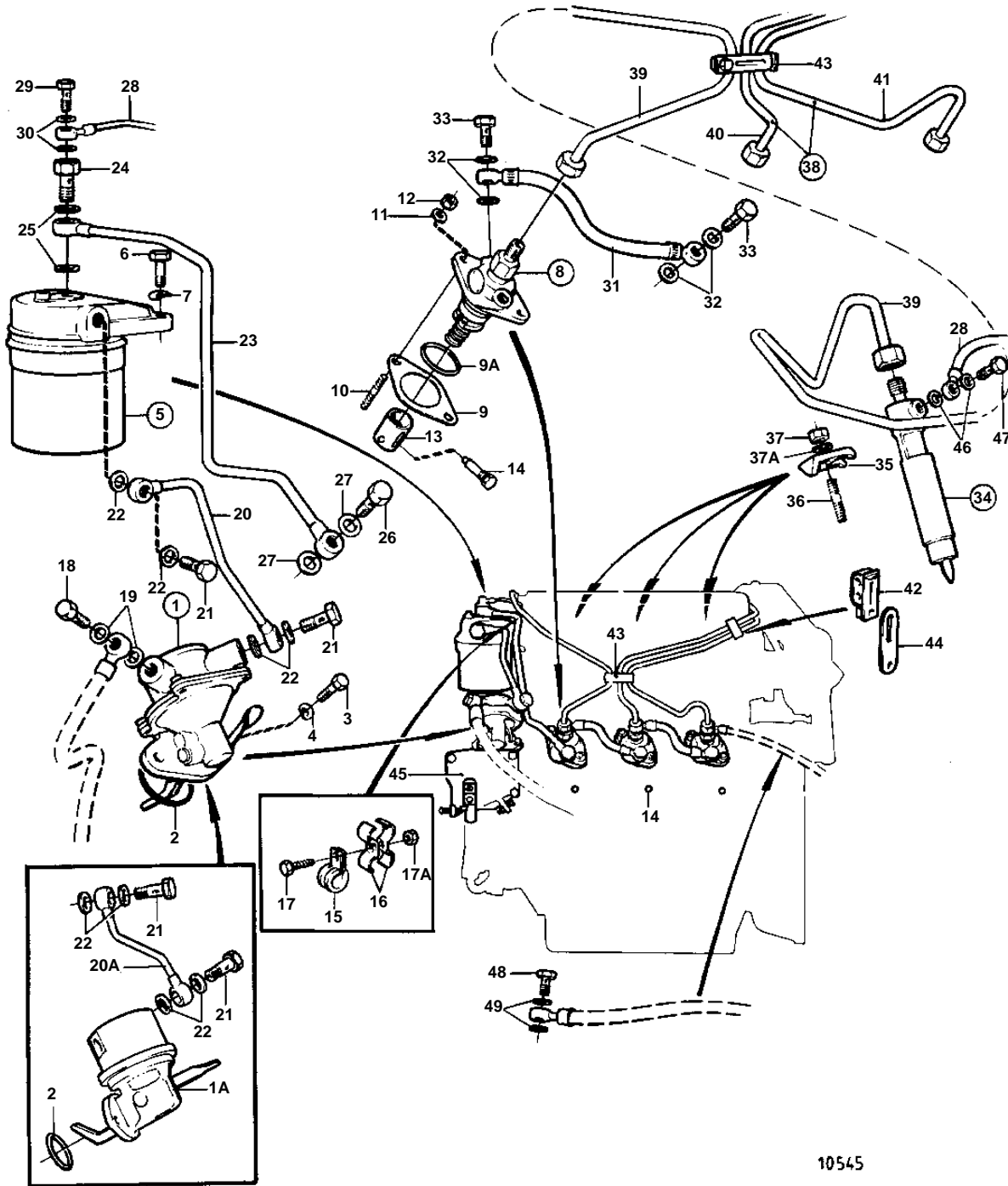


2003AG,2003BG



10545

2003AG,2003BG

REF	PART NO.	QTY	DESCRIPTION	SEE SEC.	NOTES
1A	859428	1	Feed pump		
2	942353	1	O-ring	IK	
3	942001	2	Screw		
4	941906	2	Spring washer		
5	840532	1	Fuel filter		
				02C-1025	
6	970948	2	Screw		
7	960148	1	Washer		
8	858189	3	Injection pump		
				02C-0625	
9	860211	X	Spacer		TH = 0,2 MM
	838298	X	Spacer		TH = 0,3 MM
	838299	X	Spacer		TH = 0,6 MM
	838300	X	Spacer		TH = 0,9 MM
9A	978961	3	O-ring	IK	
10	924061	6	Stud		SEE GROUP 2A
11	955894	6	Washer		
12	955782	6	Nut		
13	840598	3	Tappet		
14	840312	3	Screw		
15	952623	1	Clamp		
16	404279	2	Clamp		
17	955272	1	Screw		
17A	955781	1	Nut		
18	25167	1	Hollow screw		
19	957178	2	Gasket	IK	
20A	860912	1	Fuel pipe		
21	25167	2	Hollow screw		
22	957178	4	Gasket	IK	
23	840450	1	Fuel pipe		
24	944679	1	Hollow screw		
25	957178	2	Gasket	IK	
26	969299	1	Hollow screw		
27	957175	2	Gasket	IK	
28	840484	1	Leak-off line		
29	243487	1	Screw		
30	957170	2	Gasket	IK	
31	840317	2	Fuel hose		
32	957175	8	Gasket		
33	969299	4	Hollow screw		(74040)
34	860792	3	Injector		
	3803237	3	Injector, exch		Exchange unit
				02C-0790	
35	840402	3	Yoke		
36	924066	3	Stud		SEE GROUP 2A
37	955782	3	Nut		
37A	955894	3	Washer		
38		1	PRESSURE PIPE KIT		
39	840894	1	• Delivery pipe		
40	840897	1	• Delivery pipe		
41	840898	1	• Delivery pipe		
42	470181	1	• Clamp		

2003AG,2003BG

REF	PART NO.	QTY	DESCRIPTION	SEE SEC.	NOTES
43	470182	1	· Clamp		
44	422323	1	· Bracket		
45		1	REGULATION SYSTEM	02C-1180	
46	190990	6	Gasket		INCLUDED IN INJECTOR.
47	243487	3	Screw		INCLUDED IN INJECTOR.
48	858006	1	Hollow screw		MARKED OUT
49	957175	2	Gasket	IK	