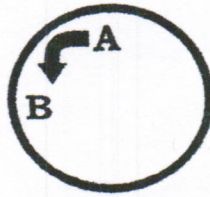


# MARINE ENGINES

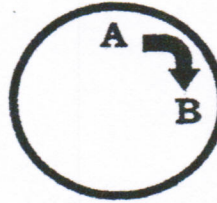
## ENGINE ROTATION

TO DETERMINE ENGINE ROTATION, FACE THE FLY WHEEL FROM THE TRANSMISSION END OF THE ENGINE, AND OBSERVE THE ROTATION OF THE FLYWHEEL FROM POINT A TO POINT B.



### LEFT HAND

- ♦ (AUTOMOTIVE ROTATION)
  - ♦ ALL STERN DRIVES
  - ♦ MANY INBOARD SKI BOAT

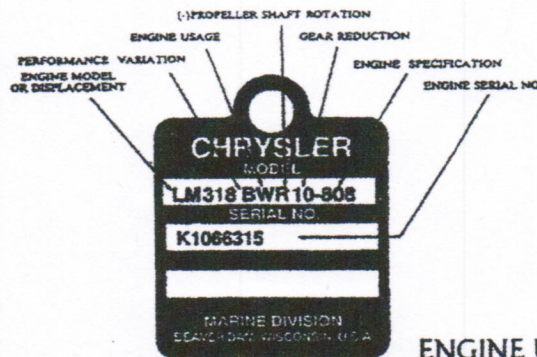


### RIGHT HAND

- ♦ MOST SINGLE ENGINE INBOARD

## CHRYSLER MARINE

CHRYSLER MARINE ENGINES HAVE A BRASS I.D. PLATE LIKE OR SIMILAR TO THE ONE TO THE RIGHT. THE PLATE IS ATTACHED EITHER ON TOP, OR AT THE REAR OF THE ENGINE. FROM THE TAG YOU CAN YOU CAN EASILY IDENTIFY: ENGINE MODEL, DRIVE TYPE, REDUCTION, PERFORMANCE VARIATION, PROP SHAFT ROTATION, SPECIFICATION AND SERIAL NUMBERS.

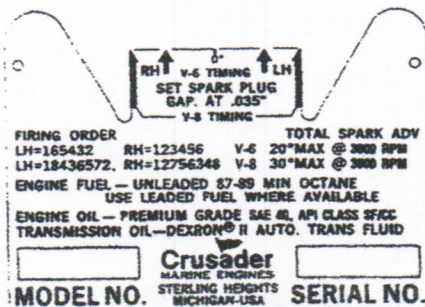


### ENGINE USAGE

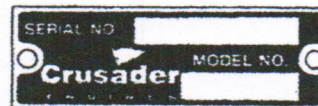
- |                               |                              |
|-------------------------------|------------------------------|
| D - DANA DRIVE 90             | T - VOLVO OUTDRIVE           |
| J - TURBINE (JET) DRIVE       | V - VEE DRIVE                |
| K - ANGLE DRIVE               | W - WARNER DRIVE (HYDRAULIC) |
| M - MERCURISER OUTDRIVE       | X - NOT APPLICABLE           |
| N - PARAGON DRIVE (HYDRAULIC) | Y - SERVICE BASE ENGINE      |
| P - POWERNAUT OUTDRIVE        | Z - SERVICE SHORT            |
| R - PARAGON MANUAL DRIVE      |                              |

## CRUSADER MARINE ENGINES

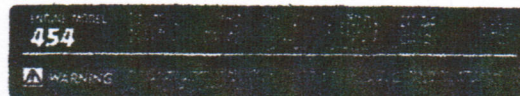
THE LOCATION OF THE IDENTIFICATION PLATE DEPENDS ON THE AGE OF THE ENGINE. ON PRE-XL SERIES ENGINES, THE IDENTIFICATION TAG IS ATTACHED TO THE FLYWHEEL HOUSING. ON XL & XLI SERIES, THE IDENTIFICATION PLATE IS ATTACHED TO THE BLOCK ALSO XL & XLI HAVE SPECIFICATION DECAL LOCATED ON ONE OF THE VALVE COVERS.



OLD STYLE PLATE (PRE-XL)



NEW STYLE PLATE (XL & XLI)



SPECIFICATION DECALE