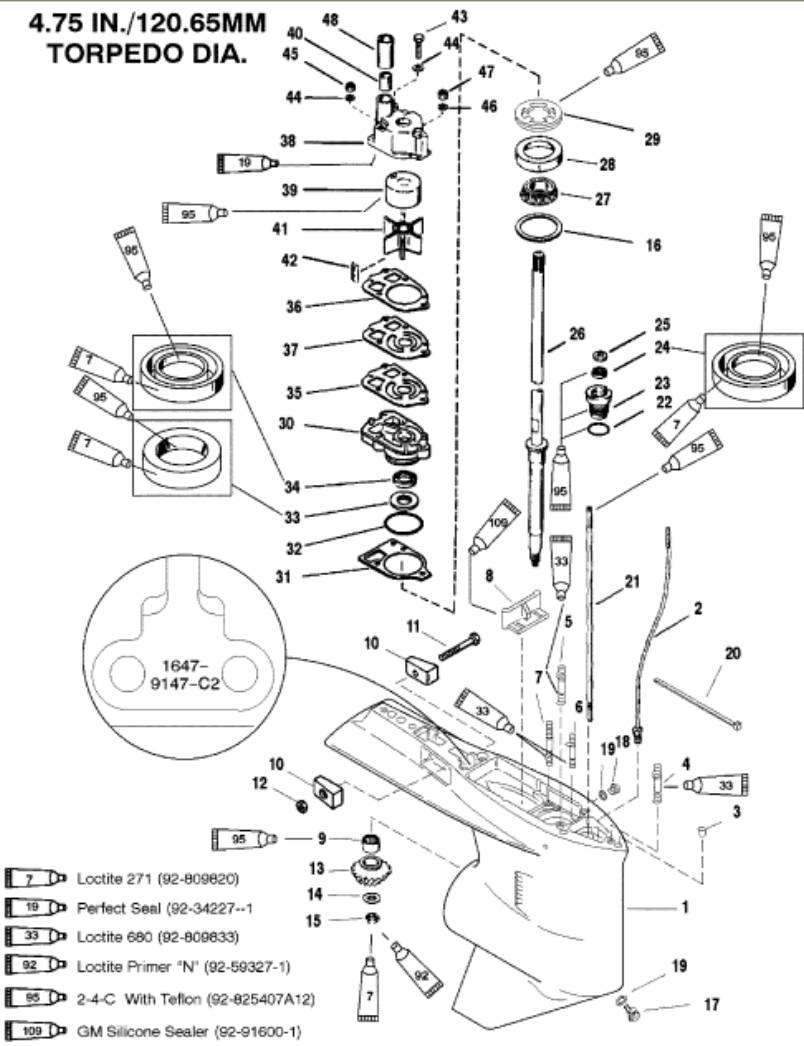


**4.75 IN./120.65MM
 TORPEDO DIA.**



GEAR HOUSING (DRIVE SHAFT)(STANDARD ROTATION)

Parts List						
Ref	Class	Part	Description	Qty	Comment	Footnote
1	1647	9148193	GEAR HOUSING	1	(BLACK)(BASIC)	
2	22	85822A10	CONNECTOR ASSEMBLY	1		
3	17	43044	DOWEL PIN	2		
4	16	78638	2	1	(LONG)	
4	16	18978	3	1	(X-LONG)	
5	16	57920	3	2		
6	16	56297	2	1		
7	16	30667	STUD (3-1/8 IN.)	2		
8		67891	FILLER BLOCK	1		
9	31	42647A	1	1		
10		826134	ROLLER BEARING	1		
10		826134	ANODE	2		
11	10	40003	33	1		
11		40003	SCREW (M6 X 40)	1		
12	11	826833	6	1		
12		826833	NUT	1		
13	43	44101	3	1	(2.0:1 GEAR RATIO-14TEETH)	
13		NSS	PINION GEAR(PART OF 43-82817	1	(1.87:1GEAR RATIO-15TEETH)	6
14	12	92721	WASHER	1	INCLUDED WITH FORWARD GE	
15	11	35921	NUT	1	INCLUDED WITH FORWARD GE	
16	15	42637A	1	AR	INCLUDED WITH FORWARD GE	5
17	22	67892A	1	1		
17		67892A	SCREW-DRAIN (MAGNETIC)	1		
18	10	79953A	2	1		
18		79953A	SCREW-GREASE FILLER	1		
19	12	19183	WASHER	2		8,9
20		56762	STA-STRAP	1		
21		78902	SHIFT SHAFT	1		
22	25	25439	O-RING	1		4,9
23	23	77631A	2	1		9
23		77631A	BUSHING ASSEMBLY	1		
24	26	816464	1	1		9
24		816464	OIL SEAL	1		
25	12	77674	WASHER-RUBBER	1		
26	45	44000	1	1	(LONG)	
26	45	44209	1	1	(X-LONG)	
27	31	36387A	1	1		
27		36387A	ROLLER BEARING	1		
28		NSS	CUP	1		6
29		824519	RETAINER	1		
30	46	42579A	3	1		
30		42579A	WATER PUMP BASE	1		
31	27	42631	1	1		4,8,9
31		42631	GASKET	1		
32	25	90011	1	1		4,8,9
32		90011	O-RING	1		
33	26	89238	1	1		9
33		89238	OIL SEAL	1		
34	26	16977	1	1		9
34		16977	OIL SEAL	1		
35	27	85608	1	1		4,8,9
35		85608	GASKET-LOWER	1		
36	27	85609	1	1		4,8,9
36		85609	GASKET-UPPER	1		
37		32435	1	1		8
37		32435	FACE PLATE	1		
38	46	96149A	1	1		8
38		96149A	WATER PUMP BODY ASSEMBLY	1		